

## Product datasheet

# Recombinant Human Recoverin protein ab48757

★★★★★ [1 Abreviews](#) [2 References](#) [1 Image](#)

### Description

<b>Product name</b>	Recombinant Human Recoverin protein
<b>Purity</b>	> 95 % SDS-PAGE. Recombinant human recoverin was overexpressed in E. coli and purified by using conventional chromatography techniques.
<b>Expression system</b>	Escherichia coli
<b>Accession</b>	<b><u>P35243</u></b>
<b>Protein length</b>	Full length protein
<b>Animal free</b>	No
<b>Nature</b>	Recombinant
<b>Species</b>	Human
<b>Sequence</b>	MGNSKSGALS KEILEELQLN TKFSEELCS WYQSFLKDCP TGRITQQFQ SIYAKFFPDT DPKAYAQHVF RSFDSNLDGT LDFKEYVIAL HMTTAGKTNQ KLEWAFSLYD VDGNGTISK N EVLEI NMAIF KMITPEDVKL LPDDENTPEK RAEKIWKYFG KNDDDKLTEK EFIEGTLANK EILRLIQFEP QKVKEKMKNA
<b>Predicted molecular weight</b>	23 kDa
<b>Amino acids</b>	1 to 200

### Specifications

Our **Abpromise guarantee** covers the use of **ab48757** in the following tested applications.

The application notes include recommended starting dilutions; optimal dilutions/concentrations should be determined by the end user.

<b>Applications</b>	Western blot SDS-PAGE
<b>Form</b>	Liquid

### Preparation and Storage

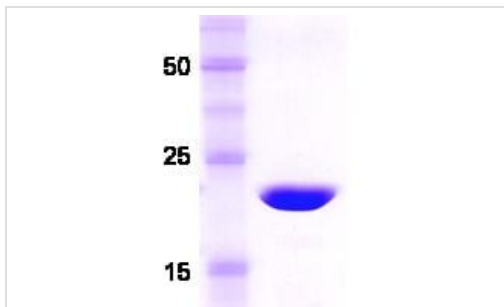
<b>Stability and Storage</b>	Shipped at 4°C. Upon delivery aliquot and store at -20°C. Avoid freeze / thaw cycles. pH: 8.00
------------------------------	---

Constituents: 0.019% Magnesium chloride, 0.242% Tris, 0.0292% EDTA, 10% Glycerol (glycerin, glycerine)

## General Info

<b>Function</b>	Seems to be implicated in the pathway from retinal rod guanylate cyclase to rhodopsin. May be involved in the inhibition of the phosphorylation of rhodopsin in a calcium-dependent manner. The calcium-bound recoverin prolongs the photoresponse.
<b>Tissue specificity</b>	Retina and pineal gland.
<b>Sequence similarities</b>	Belongs to the recoverin family. Contains 4 EF-hand domains.

## Images



14% SDS-PAGE gel loaded with recombinant human Recoverin protein. Predicted molecular weight 23.1 kDa.

SDS-PAGE - Recombinant Human Recoverin protein  
(ab48757)

**Please note:** All products are "FOR RESEARCH USE ONLY. NOT FOR USE IN DIAGNOSTIC PROCEDURES"

## Our Abpromise to you: Quality guaranteed and expert technical support

- Replacement or refund for products not performing as stated on the datasheet
- Valid for 12 months from date of delivery
- Response to your inquiry within 24 hours
- We provide support in Chinese, English, French, German, Japanese and Spanish
- Extensive multi-media technical resources to help you
- We investigate all quality concerns to ensure our products perform to the highest standards

If the product does not perform as described on this datasheet, we will offer a refund or replacement. For full details of the Abpromise, please visit <https://www.abcam.com/abpromise> or contact our technical team.

## Terms and conditions

- Guarantee only valid for products bought direct from Abcam or one of our authorized distributors