

## Product datasheet

# Recombinant human REG4 protein ab182679

1 Image

### Description

<b>Product name</b>	Recombinant human REG4 protein	
<b>Biological activity</b>	Measured by the ability of the immobilized protein to support the proliferation of HCT-116 Human colorectal carcinoma cells (ATCC: CCL-247) under low serum conditions.  The ED <sub>50</sub> for this effect is typically 3-15 µg/ml.	
<b>Purity</b>	> 95 % SDS-PAGE.	
<b>Endotoxin level</b>	< 1.000 Eu/µg	
<b>Expression system</b>	HEK 293 cells	
<b>Accession</b>	<u><b>Q9BYZ8</b></u>	
<b>Protein length</b>	Full length protein	
<b>Animal free</b>	No	
<b>Nature</b>	Recombinant	
<b>Species</b>	Human	
<b>Sequence</b>	DIIMRPSCAPGWFYHKSNCYGYFRKLRNWSDAELECQSY GNGAHLASILS LKEASTIAEYISGYQRSQPMWIGLHDPQKRQQWQWIDGAMY LYRSWSGKS MGGNKHCAEMSSNNFLTWSSNECNKRQHFLCKYRP	
<b>Predicted molecular weight</b>	17 kDa including tags	
<b>Amino acids</b>	23 to 158	
<b>Tags</b>	His tag C-Terminus	
<b>Additional sequence information</b>	AAH17089. Mature form.	

### Specifications

Our **Abpromise guarantee** covers the use of **ab182679** in the following tested applications.

The application notes include recommended starting dilutions; optimal dilutions/concentrations should be determined by the end user.

<b>Applications</b>	Functional Studies  SDS-PAGE
<b>Form</b>	Lyophilized

## Additional notes

DTT-reduced REG4 protein migrates as 18 kDa due to glycosylation.

## Preparation and Storage

### Stability and Storage

Shipped at 4°C. Store at 4°C prior to reconstitution. Store at -80°C. Avoid freeze / thaw cycle.

pH: 7.40

Constituents: 95% PBS, 5% Trehalose

Lyophilized from 0.22 µm filtered solution.

This product is an active protein and may elicit a biological response in vivo, handle with caution.

### Reconstitution

It is recommended to reconstitute the lyophilized product in 100 µl sterile deionized water to a final concentration of 1 mg/ml. Solubilize for 30 to 60 minutes at room temperature with occasional gentle mixing. Carrier protein (0.1% HSA or BSA) is strongly recommended for further dilution and long term storage.

## General Info

### Function

May be involved in inflammatory and metaplastic responses of the gastrointestinal epithelium.

### Tissue specificity

Highly expressed in the gastrointestinal tract including the duodenum, jejunum, ileum, ileocecum, appendix, descending colon, pancreas and small intestine. Weakly expressed in normal colon and stomach. Strongly expressed in most colorectal tumors than in normal colon. Preferentially expressed in mucinous tumors and in some cases neuro-endocrine tumors. Expressed in mucus-secreting cells and enterocyte-like cells. In small intestine expressed at the basal perinuclear zone of goblet cells.

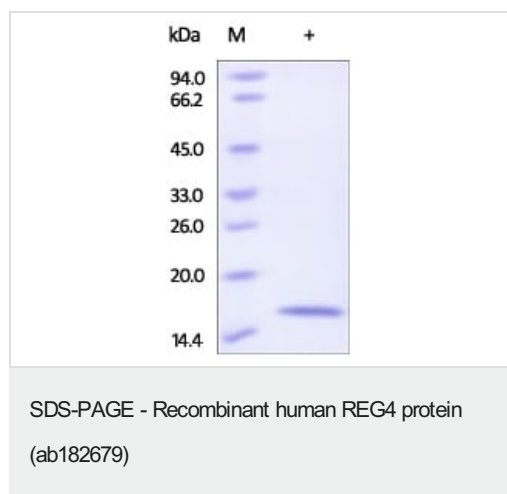
### Sequence similarities

Contains 1 C-type lectin domain.

### Cellular localization

Secreted.

## Images



The purity of ab182679 was determined by DTT-reduced (+) SDS-PAGE and staining overnight with Coomassie Blue.

**Please note:** All products are "FOR RESEARCH USE ONLY. NOT FOR USE IN DIAGNOSTIC PROCEDURES"

## **Our Abpromise to you: Quality guaranteed and expert technical support**

---

- Replacement or refund for products not performing as stated on the datasheet
- Valid for 12 months from date of delivery
- Response to your inquiry within 24 hours
  
- We provide support in Chinese, English, French, German, Japanese and Spanish
- Extensive multi-media technical resources to help you
- We investigate all quality concerns to ensure our products perform to the highest standards

If the product does not perform as described on this datasheet, we will offer a refund or replacement. For full details of the Abpromise, please visit <https://www.abcam.com/abpromise> or contact our technical team.

## **Terms and conditions**

---

- Guarantee only valid for products bought direct from Abcam or one of our authorized distributors