

Product datasheet

Recombinant human RIP2 protein ab60879

5 Images

Description

Product name	Recombinant human RIP2 protein
Purity	> 90 % Densitometry. Affinity purified.
Expression system	Baculovirus infected Sf9 cells
Protein length	Protein fragment
Animal free	No
Nature	Recombinant
Species	Human
Amino acids	1 to 299

Specifications

Our **Abpromise guarantee** covers the use of **ab60879** in the following tested applications.

The application notes include recommended starting dilutions; optimal dilutions/concentrations should be determined by the end user.

Applications	SDS-PAGE Functional Studies
Form	Liquid
Additional notes	ab64311 (Myelin Basic Protein protein) can be utilized as a substrate for assessing kinase activity

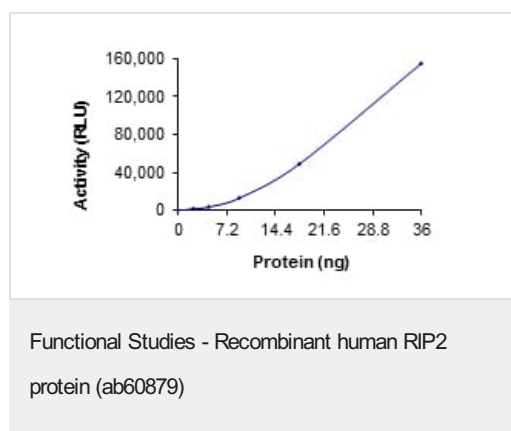
Preparation and Storage

Stability and Storage	Shipped on dry ice. Upon delivery aliquot and store at -80°C. Avoid freeze / thaw cycles. pH: 7.50 Constituents: 0.0038% EGTA, 0.00174% PMSF, 0.00385% DTT, 0.79% Tris HCl, 0.00292% EDTA, 25% Glycerol (glycerin, glycerine), 0.87% Sodium chloride This product is an active protein and may elicit a biological response in vivo, handle with caution.
------------------------------	--

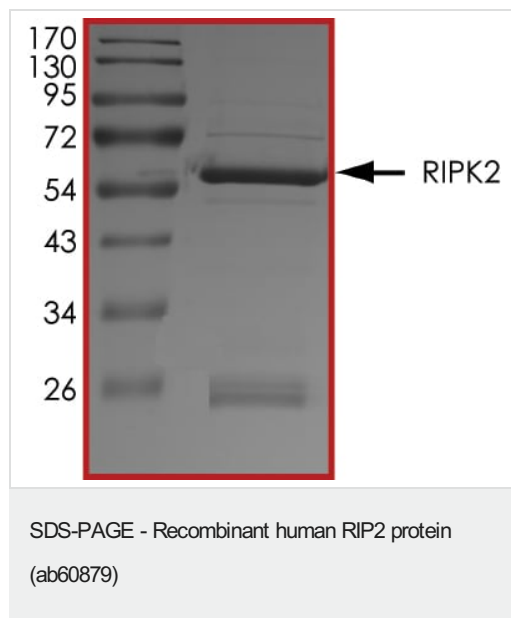
General Info

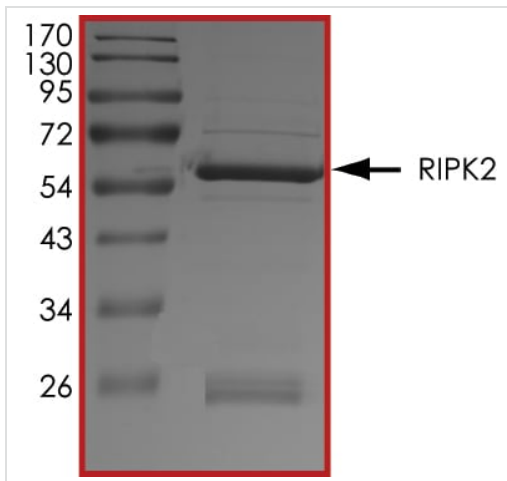
Function	Activates pro-caspase-1 and pro-caspase-8. Potentiates CASP8-mediated apoptosis. Activates NF-kappa-B.
Tissue specificity	Detected in heart, brain, placenta, lung, peripheral blood leukocytes, spleen, kidney, testis, prostate, pancreas and lymph node.
Sequence similarities	Belongs to the protein kinase superfamily. TKL Ser/Thr protein kinase family. Contains 1 CARD domain. Contains 1 protein kinase domain.
Post-translational modifications	Autophosphorylated. Phosphorylated upon DNA damage, probably by ATM or ATR. Ubiquitinated; undergoes 'Lys-63'-linked polyubiquitination catalyzed by ITCH.
Cellular localization	Cytoplasm.

Images



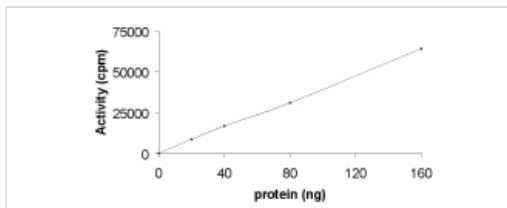
The specific activity of RIP2 (ab60879) was determined to be 20 nmol/min/mg as per activity assay protocol





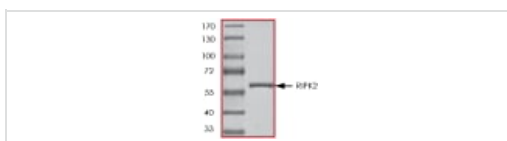
SDS PAGE analysis of ab60879

SDS-PAGE - Recombinant human RIP2 protein (ab60879)



Sample Kinase Activity Plot.

Functional Studies - Recombinant human RIP2 protein (ab60879)



ab60879 on SDS-PAGE, MW ~59 kDa.

SDS-PAGE - Recombinant human RIP2 protein (ab60879)

Please note: All products are "FOR RESEARCH USE ONLY. NOT FOR USE IN DIAGNOSTIC PROCEDURES"

Our Abpromise to you: Quality guaranteed and expert technical support

- Replacement or refund for products not performing as stated on the datasheet
- Valid for 12 months from date of delivery
- Response to your inquiry within 24 hours

- We provide support in Chinese, English, French, German, Japanese and Spanish
- Extensive multi-media technical resources to help you
- We investigate all quality concerns to ensure our products perform to the highest standards

If the product does not perform as described on this datasheet, we will offer a refund or replacement. For full details of the Abpromise, please visit <https://www.abcam.com/abpromise> or contact our technical team.

Terms and conditions

- Guarantee only valid for products bought direct from Abcam or one of our authorized distributors