

Recombinant Human RNF10 protein ab160715

1 Image

Description

Product name	Recombinant Human RNF10 protein
Expression system	Wheat germ
Accession	<u>Q8N5U6-1</u>
Protein length	Full length protein
Animal free	No
Nature	Recombinant
Species	Human
Sequence	MPLSSPNAAATASDMDKNSGNSSSSASSGSSKGQQPPR SASAGPAGESKP KSDGKNSSGSKRYNRKRELSYPKNESFNNQSRSSSQK SKTFNKMP PQRG GGSSKLFSSSFNGRRDEVAEAQRAEFSPAQFSGPKKIN LNHLLNFTFEP RGQTGHFEGSGHGSWGKR NKWGHKPFNKELFLQANCQ FVVS EDQDYTAHF ADPDTLVNWD FVEQVRICSHEVPSCPICLYPPTAAKITRC GHIFCWACIL HYLSLSEKTWSKPCICYSSVHKKDLKSVVATESHQYVVG DTITMQLMKRE KGV LVALPKSKWMNVDHPIHLGDEQHSQYSKLLLASKEQ VLHRVVLEEKV ALEQQLAEEKHTPESC FIEAAIQELKTREEALSGLAGSRR EVTGVVAALE QLVLMA PLAKESVFQPRKGVLEYLSAFDEETTEVCSLDT PSRPLALPLVE EEEAVSEPEPEGLPEACDDLELADDNLKEGTICTESSQQ EPITKSGFTRL SSSPCYFYQAEDGQHMFLHPVNV RCLVREYGS LERSPE KISATVVEIAG YSMS EDVRQRHRYLSHLPLTCEFSICELALQPPVVSKETL EMFSDDIEKR KRQRQKKAREERRRERRIEENKKQ GKYPEVHIPL ENLQ QFPAFN SYTC SSDSALGPTSTEGHGALSISPLSRSPGSHADFLLTPLSPT ASQGSPSFCV

GSLEEDSPFPSFAQMLRVGKAKADVWPKTAPKKDENSEL
VPPAPVDSGES
DNSDRVVPVSFQNSFSQAIEAAFMKLDTPATSDPLSEEK
GGKKRKKQKQK LLFSTSVVHTK

Amino acids	1 to 811
Tags	GST tag N-Terminus

Specifications

Our **Abpromise guarantee** covers the use of **ab160715** in the following tested applications.

The application notes include recommended starting dilutions; optimal dilutions/concentrations should be determined by the end user.

Applications	Western blot ELISA
Form	Liquid
Additional notes	

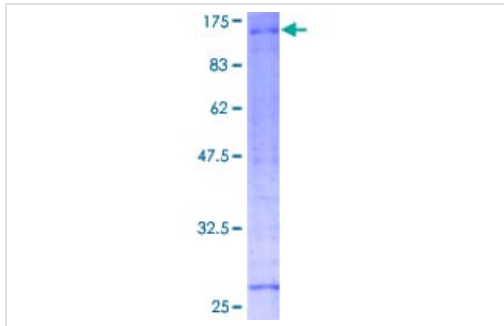
Preparation and Storage

Stability and Storage	Shipped on dry ice. Upon delivery aliquot and store at -80°C. Avoid freeze / thaw cycles. pH: 8.00 Constituents: 0.31% Glutathione, 0.79% Tris HCl
------------------------------	--

General Info

Relevance	The RNF10 protein contains a ring finger motif, which is known to be involved in protein-protein interactions. The specific function of this protein has not yet been determined. EST data suggests the existence of multiple alternatively spliced transcript variants, however, their full length nature is not known.
Cellular localization	Cytoplasmic and Nuclear

Images



ab160715 on a 12.5% SDS-PAGE stained with Coomassie Blue.

SDS-PAGE - Recombinant Human RNF10 protein
(ab160715)

Please note: All products are "FOR RESEARCH USE ONLY. NOT FOR USE IN DIAGNOSTIC PROCEDURES"

Our Abpromise to you: Quality guaranteed and expert technical support

- Replacement or refund for products not performing as stated on the datasheet
- Valid for 12 months from date of delivery
- Response to your inquiry within 24 hours
- We provide support in Chinese, English, French, German, Japanese and Spanish
- Extensive multi-media technical resources to help you
- We investigate all quality concerns to ensure our products perform to the highest standards

If the product does not perform as described on this datasheet, we will offer a refund or replacement. For full details of the Abpromise, please visit <https://www.abcam.com/abpromise> or contact our technical team.

Terms and conditions

- Guarantee only valid for products bought direct from Abcam or one of our authorized distributors