

Recombinant human ROR1 protein ab140807

2 Images

| Description                |   |
|----------------------------|---|
| Product name               | Recombinant human ROR1 protein  |
| Biological activity        | The specific activity of ROR1 was determined to be 0.2 nmol/min/mg.   |
| Purity                     | > 95 % Densitometry.<br>Affinity purified.  |
| Expression system          | Baculovirus infected Sf9 cells  |
| Accession                  | <u>Q01973</u>   |
| Protein length             | Protein fragment  |
| Animal free                | No  |
| Nature                     | Recombinant   |
| Species                    | Human   |
| Sequence                   | RNNQKSSSAPVQRQPKHVRGQNVEMSLNAYKPKSKAK<br>ELPLSAVRFMEE<br>LGECAFGKIYKGHLYLPGMDHAQLVAIKTLKDYNPQQWT<br>EFQQEASLMA<br>ELHHPNIVCLLGAVTQEQPVCMLEFYINQGDLHEFLIMRSP<br>HSDVGCSSD<br>EDGTVKSSLDHGDFLHIAIQIAAGMEYLSSHFFVHKDLAAR<br>NILIGEQLH<br>VKISDLGLSREYSADYYRVQSKSLLPIRWMPPEAIMYGKF<br>SSDSDIWSF<br>GVVLWEIFSFGQLQPYYGFSNQEVIEMVRKRQLLPCEDCP<br>PRMYSLMTEC<br>WNEIPSRPRPKDIHVRLRSWEGLSSHTSSTTPSGGNATT<br>QTTSLSASPV<br>SNLSNPRYPNYMFPSQGITPQGQIAGFIGPPIPNQRFIPIN<br>GYPIPPGY<br>AAFPAAHYQPTGPPRVIQHCPPPKSRSPSSASGSTSTGH<br>VTSLPSSGSNQ<br>EANIPLLPHMSIPNHPGGMGITVFGNKSQKPYKIDSKQASL<br>LGDANIHHG TESMISAEL |
| Predicted molecular weight | 82 kDa including tags   |
| Amino acids                | 429 to 937  |
| Tags                       | GST tag N-Terminus  |

## Specifications

---

Our **Abpromise guarantee** covers the use of **ab140807** in the following tested applications.

The application notes include recommended starting dilutions; optimal dilutions/concentrations should be determined by the end user.

|                         |  |
|-------------------------|--|
| <b>Applications</b>     | Functional Studies   |
|                         | SDS-PAGE   |
|                         | Western blot   |
| <b>Form</b>             | Liquid   |
| <b>Additional notes</b> | <b>ab64311</b> (Myelin Basic Protein protein) can be utilized as a substrate for assessing kinase activity |

## Preparation and Storage

---

|                              |  |
|------------------------------|--|
| <b>Stability and Storage</b> | Shipped on dry ice. Upon delivery aliquot and store at -80°C. Avoid freeze / thaw cycles.                    |
|                              | pH: 7  |
|                              | Constituents: 0.31% Glutathione, 0.002% PMSF, 0.004% DTT, 0.79% Tris HCl, 0.003% EDTA, 0.88% Sodium chloride |
|                              | This product is an active protein and may elicit a biological response in vivo, handle with caution.         |

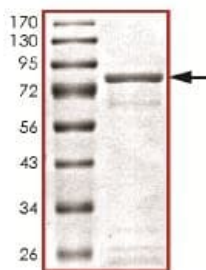
## General Info

---

|                              |   |
|------------------------------|---|
| <b>Function</b>              | Tyrosine-protein kinase receptor whose role is not yet clear.   |
| <b>Tissue specificity</b>    | Expressed strongly in human heart, lung and kidney, but weakly in the CNS. Isoform Short is strongly expressed in fetal and adult CNS and in a variety of human cancers, including those originating from CNS or PNS neuroectoderm. |
| <b>Sequence similarities</b> | Belongs to the protein kinase superfamily. Tyr protein kinase family. ROR subfamily.  |
|                              | Contains 1 FZ (frizzled) domain.  |
|                              | Contains 1 Ig-like C2-type (immunoglobulin-like) domain.  |
|                              | Contains 1 kringle domain.  |
| <b>Developmental stage</b>   | Contains 1 protein kinase domain.   |
|                              | Expressed at high levels during early embryonic development. The expression levels drop strongly around day 16 and there are only very low levels in adult tissues.   |
| <b>Cellular localization</b> | Membrane.   |

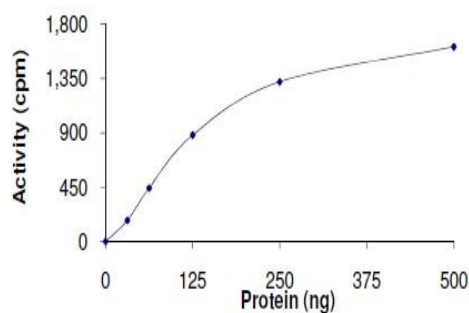
## Images

---



SDS PAGE analysis of ab140807 at ~82 kDa.

SDS-PAGE - Recombinant human ROR1 protein  
(ab140807)



The specific activity of ROR1 (ab140807) was determined to be 0.2 nmol /min/mg.

Functional Studies - Recombinant human ROR1  
protein (ab140807)

**Please note:** All products are "FOR RESEARCH USE ONLY. NOT FOR USE IN DIAGNOSTIC PROCEDURES"

### Our Abpromise to you: Quality guaranteed and expert technical support

- Replacement or refund for products not performing as stated on the datasheet
- Valid for 12 months from date of delivery
- Response to your inquiry within 24 hours
- We provide support in Chinese, English, French, German, Japanese and Spanish
- Extensive multi-media technical resources to help you
- We investigate all quality concerns to ensure our products perform to the highest standards

If the product does not perform as described on this datasheet, we will offer a refund or replacement. For full details of the Abpromise, please visit <https://www.abcam.com/abpromise> or contact our technical team.

## Terms and conditions

---

- Guarantee only valid for products bought direct from Abcam or one of our authorized distributors