

Recombinant Human rSec6 protein ab153182

[1 Image](#)

Description

Product name	Recombinant Human rSec6 protein
Expression system	Wheat germ
Protein length	Full length protein
Animal free	No
Nature	Recombinant
Species	Human

Sequence

MKETDREAVATAVQQRVAGMLQRPDQLDKVEQYRRREAR
KKASVEARLCAA
IQSQLDGVRTGLSQLHNALNDVKDIQQSLADVSKDWRQSI
NTIESLKDVK
DAVVQHSQLAAAVENLKNIFSVPEIVRETQDLIEQGALLQA
HRKLMDFEC
SRDGLMYEQYRMDSGNTRDMLIHGYFGSTQGLSDELAK
QLWMVLQRSLV
TVRRDPTLLVSVVRIIEREEKIDRRILDRKKQTGFVPPGRP
K
NWKEKMFT
ILERTVTTRIEGTQADTRESKMWLVRHLEIIRKYVLDLIVA
KNLMVQC
FPPHYEIKNLLNMYHQALSTRMQDLASEDLEANEIVSLLT
WVLNTYTST
EMMRNVELAPEVDVGTLEPLLSPHVSELDDTYMSTLTSN
IIAWLRKALE
TDKKDWVKETEPEADQDGYQTTLPAIFQMFEQNLQVA
AQISEDLKTKV
LVLCLQMNSFLSRYKDEAQLYKEEHLRNRQHPCYVQY
MIAIINNCQTF
KESVSLKRKYLKNEVEEGVSPSQPSMDGILDIAIEGCS
GLLEEVFLDL
EQHLNELMTKKWLLGSNAVDIICVTVEDYFNDFAKIKKPYK
KRMTAEHR
RVVVEYLRAVMQKRISFRSPEERKEGAEKMVREAEQLRF
LFRKLASGFGE
DVDGYCDTIVAAEVIKLTDPSLLYLEVSTLVSKYPDIRDDH
IGALLAVR
GDASRDMKQTIMETLEQGAQASPSYVPLFKDIVPSLNV

Amino acids	1 to 745
Tags	GST tag N-Terminus

Specifications

Our **Abpromise guarantee** covers the use of **ab153182** in the following tested applications.

The application notes include recommended starting dilutions; optimal dilutions/concentrations should be determined by the end user.

Applications Western blot

ELISA

Form Liquid

Additional notes

Preparation and Storage

Stability and Storage Shipped on dry ice. Upon delivery aliquot and store at -80°C. Avoid freeze / thaw cycles.

pH: 8.00

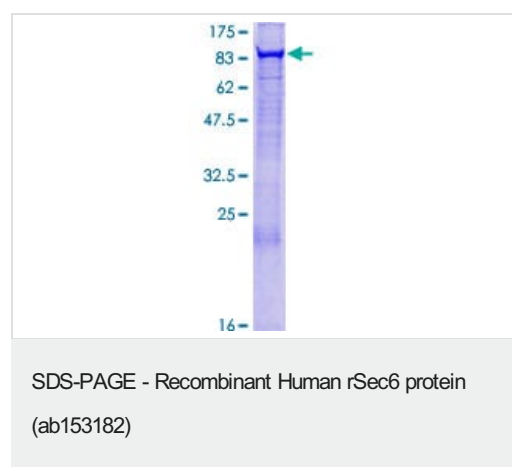
Constituents: 0.31% Glutathione, 0.79% Tris HCl

General Info

Function Component of the exocyst complex involved in the docking of exocytic vesicles with fusion sites on the plasma membrane.

Sequence similarities Belongs to the SEC6 family.

Images



ab153182 on a 12.5% SDS-PAGE stained with Coomassie Blue.

Please note: All products are "FOR RESEARCH USE ONLY. NOT FOR USE IN DIAGNOSTIC PROCEDURES"

Our Abpromise to you: Quality guaranteed and expert technical support

- Replacement or refund for products not performing as stated on the datasheet
- Valid for 12 months from date of delivery
- Response to your inquiry within 24 hours

- We provide support in Chinese, English, French, German, Japanese and Spanish
- Extensive multi-media technical resources to help you
- We investigate all quality concerns to ensure our products perform to the highest standards

If the product does not perform as described on this datasheet, we will offer a refund or replacement. For full details of the Abpromise, please visit <https://www.abcam.com/abpromise> or contact our technical team.

Terms and conditions

- Guarantee only valid for products bought direct from Abcam or one of our authorized distributors