

# Recombinant human RSPO1 protein ab155745

1 Image

### Description

<b>Product name</b>	Recombinant human RSPO1 protein
<b>Biological activity</b>	Measured by its binding ability in a functional ELISA. Immobilised Human RSPO1 at 20 µg/ml (100 µl/well) can bind Human LIMP2 with a linear range of 12.5 - 1000 ng/ml.
<b>Purity</b>	> 95 % SDS-PAGE. ab155745 was lyophilised from 0.22µm filtered solution.
<b>Endotoxin level</b>	< 1.000 Eu/µg
<b>Expression system</b>	HEK 293 cells
<b>Accession</b>	<u><b>Q2MKA7</b></u>
<b>Protein length</b>	Protein fragment
<b>Animal free</b>	No
<b>Nature</b>	Recombinant
<b>Species</b>	Human
<b>Sequence</b>	SRGIKGRQR RISAEQSAC AKGCELCSEV NGCLKCSPKL FILLERNDIR QVGVCLPSCP PGYFDARNPD MNKCIKCKIE HCEACFSHNF CTKCKEGLYL HKGRCYPACP EGSSAANGTM ECSSPA
<b>Predicted molecular weight</b>	17 kDa including tags
<b>Amino acids</b>	21 to 146
<b>Tags</b>	His tag C-Terminus

### Specifications

Our **Abpromise guarantee** covers the use of **ab155745** in the following tested applications.

The application notes include recommended starting dilutions; optimal dilutions/concentrations should be determined by the end user.

<b>Applications</b>	ELISA Functional Studies SDS-PAGE
<b>Form</b>	Lyophilized
<b>Additional notes</b>	Measured by its binding ability in a functional ELISA. Immobilised Human RSPO1 at 20 µg/ml (100 µl/well) can bind Human LIMP2 with a linear range of 12.5 - 1000 ng/ml.

## Preparation and Storage

---

<b>Stability and Storage</b>	<p>Shipped at 4°C. Store at +4°C short term (1-2 weeks). Upon delivery aliquot. Store at -20°C or -80°C. Avoid freeze / thaw cycle.</p> <p>pH: 7.40</p> <p>Constituents: 95% PBS, 5% Trehalose</p> <p>This product is an active protein and may elicit a biological response in vivo, handle with caution.</p>
<b>Reconstitution</b>	<p>It is recommended to reconstitute the lyophilized protein in sterile deionized water to a final concentration of 200 ug/ml. Solubilize for 30 to 60 minutes at room temperature with occasional gentle mixing. Carrier protein (0.1% HSA or BSA) is strongly recommended for further dilution and long term storage.</p>

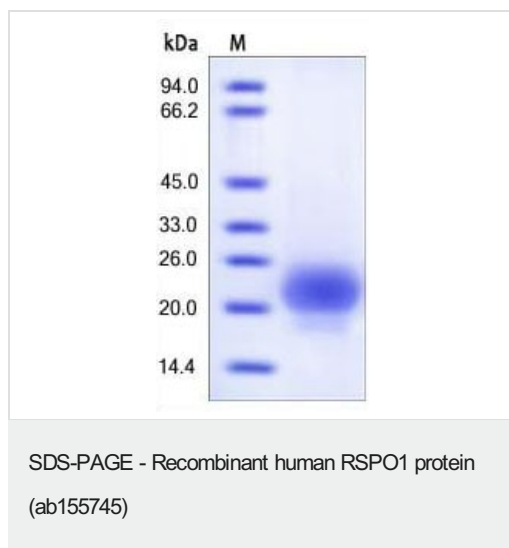
## General Info

---

<b>Function</b>	<p>Activator of the beta-catenin signaling cascade, leading to TCF-dependent gene activation. Acts both in the canonical Wnt/beta-catenin-dependent pathway, possibly via a direct interaction with Wnt proteins, and in a Wnt-independent beta catenin pathway through a receptor signaling pathway that may not use frizzled/LRP receptors. Acts as a ligand for frizzled FZD8 and LRP6. May negatively regulate the TGF-beta pathway. Has a essential roles in ovary determination.</p>
<b>Tissue specificity</b>	<p>Abundantly expressed in adrenal glands, ovary, testis, thyroid and trachea but not in bone marrow, spinal cord, stomach, leukocytes colon, small intestine, prostate, thymus and spleen.</p>
<b>Involvement in disease</b>	<p>Defects in RSPO1 are the cause of palmoplantar keratoderma with squamous cell carcinoma of skin and sex reversal (PKKSCC) [MIM:610644]. This recessive syndrome is characterized by XX (female to male) SRY-independent sex reversal, palmoplantar hyperkeratosis and predisposition to squamous cell carcinoma of the skin.</p>
<b>Sequence similarities</b>	<p>Belongs to the R-spondin family.</p> <p>Contains 2 FU (furin-like) repeats.</p> <p>Contains 1 TSP type-1 domain.</p>
<b>Domain</b>	<p>The FU repeats are required for activation and stabilization of beta-catenin.</p>
<b>Cellular localization</b>	<p>Secreted.</p>

## Images

---



SDS-PAGE analysis of reduced ab155745 stained overnight with Coomassie Blue.

**Please note:** All products are "FOR RESEARCH USE ONLY. NOT FOR USE IN DIAGNOSTIC PROCEDURES"

### Our Abpromise to you: Quality guaranteed and expert technical support

---

- Replacement or refund for products not performing as stated on the datasheet
- Valid for 12 months from date of delivery
- Response to your inquiry within 24 hours
- We provide support in Chinese, English, French, German, Japanese and Spanish
- Extensive multi-media technical resources to help you
- We investigate all quality concerns to ensure our products perform to the highest standards

If the product does not perform as described on this datasheet, we will offer a refund or replacement. For full details of the Abpromise, please visit <https://www.abcam.com/abpromise> or contact our technical team.

### Terms and conditions

---

- Guarantee only valid for products bought direct from Abcam or one of our authorized distributors