

## Product datasheet

# Recombinant Human S100G protein ab96001

1 Image

### Description

---

<b>Product name</b>	Recombinant Human S100G protein
<b>Purity</b>	> 95 % SDS-PAGE. ab96001 is not sterile. Please filter the product by an appropriate sterile filter before using it in the cell culture.
<b>Expression system</b>	Escherichia coli
<b>Accession</b>	<b><u>P29377</u></b>
<b>Protein length</b>	Full length protein
<b>Animal free</b>	No
<b>Nature</b>	Recombinant
<b>Species</b>	Human
<b>Sequence</b>	<b>MKHHHHHHASTKKSPEELKRIFEKYAAKEGDPDQLSKD ELKLLIQAEFPS LLKGPNTLDDLDFQELDKNGDGEVSFEFEFQVLVKKISQ</b>
<b>Predicted molecular weight</b>	10 kDa including tags
<b>Amino acids</b>	2 to 79
<b>Tags</b>	His tag N-Terminus

### Specifications

---

Our **Abpromise guarantee** covers the use of **ab96001** in the following tested applications.

The application notes include recommended starting dilutions; optimal dilutions/concentrations should be determined by the end user.

<b>Applications</b>	Western blot SDS-PAGE
<b>Form</b>	Lyophilized

### Preparation and Storage

---

<b>Stability and Storage</b>	Shipped at 4°C. Upon delivery aliquot. Store at -80°C. Avoid freeze / thaw cycle. Constituents: 0.242% Tris, 0.29% Sodium chloride
<b>Reconstitution</b>	Add deionized water to prepare a working stock solution of approximately 0.5 mg/mL and let the

lyophilized pellet dissolve completely.

## General Info

---

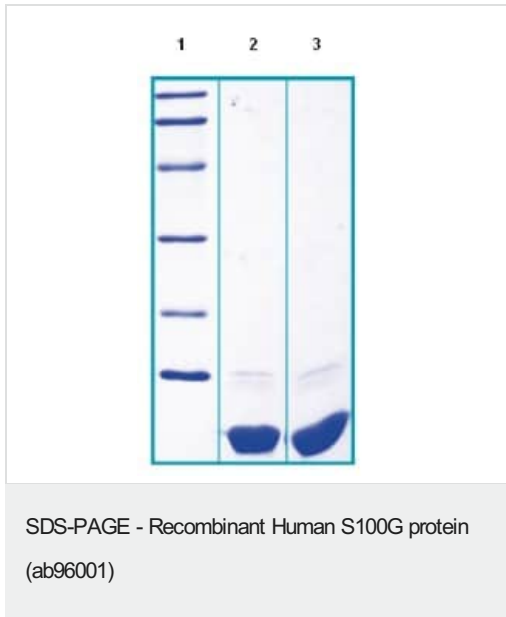
### Sequence similarities

Belongs to the S-100 family.  
Contains 2 EF-hand domains.

---

## Images

---



14% SDS-PAGE separation of Human S100G protein (ab96001)

Lane 1. Molecular weight marker: 14, 21, 31, 45, 66 and 97 kDa

Lane 2. Reduced and heated sample, 5 µg per lane

Lane 3. Non reduced and non heated sample, 5 µg per lane

**Please note:** All products are "FOR RESEARCH USE ONLY. NOT FOR USE IN DIAGNOSTIC PROCEDURES"

## Our Abpromise to you: Quality guaranteed and expert technical support

---

- Replacement or refund for products not performing as stated on the datasheet
- Valid for 12 months from date of delivery
- Response to your inquiry within 24 hours
- We provide support in Chinese, English, French, German, Japanese and Spanish
- Extensive multi-media technical resources to help you
- We investigate all quality concerns to ensure our products perform to the highest standards

If the product does not perform as described on this datasheet, we will offer a refund or replacement. For full details of the Abpromise, please visit <https://www.abcam.com/abpromise> or contact our technical team.

## Terms and conditions

---

- Guarantee only valid for products bought direct from Abcam or one of our authorized distributors