

Product datasheet

Recombinant Human SBEM protein ab187461

1 Image

Description

Product name	Recombinant Human SBEM protein
Purity	> 85 % SDS-PAGE. ab187461 was purified by using conventional chromatography techniques.
Expression system	Escherichia coli
Accession	<u>Q96DR8</u>
Protein length	Full length protein
Animal free	No
Nature	Recombinant
Species	Human
Sequence	MGSSHHHHHHSSGLVPRGSHMGSNPTTAAPADTYPATG PADDEAPDAETT AAATTATTAAPTATTAASTTARKDIPVLPKWVGDLPNGR VCP
Predicted molecular weight	9 kDa including tags
Amino acids	21 to 90
Tags	His tag N-Terminus
Additional sequence information	Mature protein

Specifications

Our **Abpromise guarantee** covers the use of **ab187461** in the following tested applications.

The application notes include recommended starting dilutions; optimal dilutions/concentrations should be determined by the end user.

Applications	SDS-PAGE Mass Spectrometry
Mass spectrometry	MALDI-TOF
Form	Liquid

Preparation and Storage

Stability and Storage	Shipped at 4°C. Store at +4°C short term (1-2 weeks). Upon delivery aliquot. Store at -20°C or -
------------------------------	--

80°C. Avoid freeze / thaw cycle.

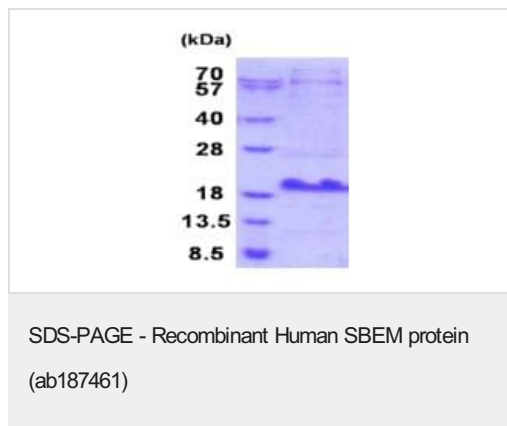
pH: 7.40

Constituents: 90% PBS, 10% Glycerol (glycerin, glycerine)

General Info

Function	May play a role as marker for the diagnosis of metastatic breast cancer.
Tissue specificity	Expressed in mammary, salivary glands and prostate. Also detected in lung. Mainly expressed in cancer cell lines of breast origin. Highly expressed in lymph node-positive compared with node-negative tumors. Detected in all lymph node containing metastatic cells.
Post-translational modifications	O-glycosylated.
Cellular localization	Secreted. Membrane.

Images



15% SDS-PAGE analysis of ab187461 (3µg).

Please note: All products are "FOR RESEARCH USE ONLY. NOT FOR USE IN DIAGNOSTIC PROCEDURES"

Our Abpromise to you: Quality guaranteed and expert technical support

- Replacement or refund for products not performing as stated on the datasheet
- Valid for 12 months from date of delivery
- Response to your inquiry within 24 hours
- We provide support in Chinese, English, French, German, Japanese and Spanish
- Extensive multi-media technical resources to help you
- We investigate all quality concerns to ensure our products perform to the highest standards

If the product does not perform as described on this datasheet, we will offer a refund or replacement. For full details of the Abpromise, please visit <https://www.abcam.com/abpromise> or contact our technical team.

Terms and conditions

- Guarantee only valid for products bought direct from Abcam or one of our authorized distributors