

1 Image

Product name	Recombinant Human SCGN/Secretagogen protein
Purity	> 90 % SDS-PAGE. ab99417 is purified using conventional chromatography techniques.
Expression system	Escherichia coli
Accession	<u>O76038</u>
Protein length	Full length protein
Animal free	No
Nature	Recombinant
Species	Human
Sequence	MGSSHHHHHSSGLVPRGSH MDSSREPTLGRLDAAGF WQVWQRFDADEKG YEEKELDAFFLHMLMKLGTTDTVMKANLHKVKQQFMTTQ DASKDGRIRM KELAGMFLSEDENFLLLFRRENPLDSSVEFMQWRKYDA DSSGFISAAEL RNFLRDLFLHHKKAISEAKLEEYTGTMKIFDRNKDGRLLD NDLARILAL QENFLLQFKMDACSTEERKRDFEKIFAYYDVSKTGALEGP EVDGFVKDMM ELVQPSISGVDLDKFREILLRHCDVNKDGKIQKSELALCLG LKINP
Predicted molecular weight	34 kDa including tags
Amino acids	1 to 276
Tags	His tag N-Terminus

Our **Abpromise guarantee** covers the use of **ab99417** in the following tested applications.

The application notes include recommended starting dilutions; optimal dilutions/concentrations should be determined by the end user.

Applications Mass Spectrometry

	SDS-PAGE
Mass spectrometry	MALDI-TOF
Form	Liquid
Additional notes	This product was previously labelled as SCGN

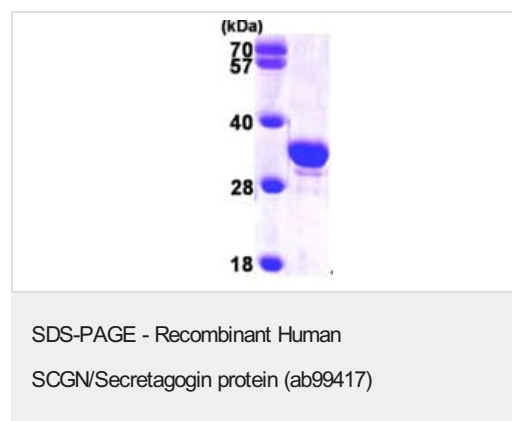
Preparation and Storage

Stability and Storage	Shipped at 4°C. Upon delivery aliquot and store at -20°C or -80°C. Avoid repeated freeze / thaw cycles. pH: 8.00 Constituents: 0.0154% DTT, 0.316% Tris HCl, 10% Glycerol (glycerin, glycerine), 0.58% Sodium chloride
------------------------------	--

General Info

Tissue specificity	Expressed at high levels in the pancreatic islets of Langerhans and to a much lesser extent in the gastrointestinal tract (stomach, small intestine and colon), the adrenal medulla and cortex and the thyroid C-cells. In the brain, the expression is restricted to distinct subtypes of neurons with highest expression in the molecular layer of the cerebellum (stellate and basket cells), in the anterior part of the pituitary gland, in the thalamus, in the hypothalamus and in a subgroup of neocortical neurons.
Sequence similarities	Contains 6 EF-hand domains.
Cellular localization	Cytoplasm. Secreted. Cytoplasmic vesicle > secretory vesicle membrane. Predominantly cytoplasmic. A small proportion is associated with secretory granules and membrane fractions (By similarity). Detectable in human serum after ischemic neuronal damage.

Images



15% SDS-PAGE showing ab99417 at approximately 34.2kDa (3µg).

Please note: All products are "FOR RESEARCH USE ONLY. NOT FOR USE IN DIAGNOSTIC PROCEDURES"

Our Abpromise to you: Quality guaranteed and expert technical support

- Replacement or refund for products not performing as stated on the datasheet
- Valid for 12 months from date of delivery
- Response to your inquiry within 24 hours

- We provide support in Chinese, English, French, German, Japanese and Spanish
- Extensive multi-media technical resources to help you
- We investigate all quality concerns to ensure our products perform to the highest standards

If the product does not perform as described on this datasheet, we will offer a refund or replacement. For full details of the Abpromise, please visit <https://www.abcam.com/abpromise> or contact our technical team.

Terms and conditions

- Guarantee only valid for products bought direct from Abcam or one of our authorized distributors