

Product datasheet

Recombinant Human Sema6A protein ab163586

[1 Image](#)

Description

Product name	Recombinant Human Sema6A protein
Expression system	Wheat germ
Protein length	Protein fragment
Animal free	No
Nature	Recombinant
Species	Human
Sequence	PEDSEPISSHGNYTKQYPVFGHKPGRNTTQRHRLDIQMI MIMNGTLYI AARDHIYTDIDTSHTEEYCSKKLWKSQRQADVDTCRMK GKHKDECHNF
Amino acids	21 to 120
Tags	GST tag N-Terminus

Specifications

Our **Abpromise guarantee** covers the use of **ab163586** in the following tested applications.

The application notes include recommended starting dilutions; optimal dilutions/concentrations should be determined by the end user.

Applications	Western blot ELISA
Form	Liquid

Additional notes

Preparation and Storage

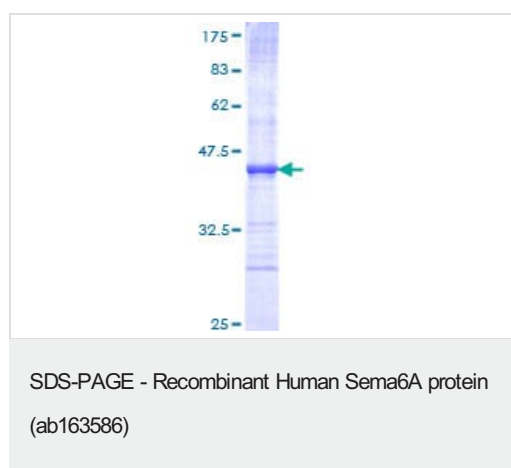
Stability and Storage	Shipped on dry ice. Upon delivery aliquot and store at -80°C. Avoid freeze / thaw cycles. pH: 8.00 Constituents: 0.31% Glutathione, 0.79% Tris HCl
------------------------------	--

General Info

General info

Function	Cell surface receptor for PLXNA2 that plays an important role in cell-cell signaling. Required for normal granule cell migration in the developing cerebellum. Promotes reorganization of the actin cytoskeleton and plays an important role in axon guidance in the developing central nervous system. Can act as repulsive axon guidance cue. Has repulsive action towards migrating granular neurons. May play a role in channeling sympathetic axons into the sympathetic chains and controlling the temporal sequence of sympathetic target innervation.
Sequence similarities	Belongs to the semaphorin family. Contains 1 PSI domain. Contains 1 Sema domain.
Cellular localization	Cell membrane.

Images



ab163586 on a 12.5% SDS-PAGE stained with Coomassie Blue.

Please note: All products are "FOR RESEARCH USE ONLY. NOT FOR USE IN DIAGNOSTIC PROCEDURES"

Our Abpromise to you: Quality guaranteed and expert technical support

- Replacement or refund for products not performing as stated on the datasheet
- Valid for 12 months from date of delivery
- Response to your inquiry within 24 hours
- We provide support in Chinese, English, French, German, Japanese and Spanish
- Extensive multi-media technical resources to help you
- We investigate all quality concerns to ensure our products perform to the highest standards

If the product does not perform as described on this datasheet, we will offer a refund or replacement. For full details of the Abpromise, please visit <https://www.abcam.com/abpromise> or contact our technical team.

Terms and conditions

- Guarantee only valid for products bought direct from Abcam or one of our authorized distributors