

Product datasheet

Recombinant Human SEP15 protein ab156315

1 Image

Description

Product name	Recombinant Human SEP15 protein
Purity	> 95 % SDS-PAGE.
Expression system	Escherichia coli
Protein length	Full length protein
Animal free	No
Nature	Recombinant
Species	Human
Sequence	<p>MGSSHHHHHH SSSLVPRGSH MGSVSAFGAE FSSEACRELG FSSNLLCSSC DLLGQFNLLQ LDPDCRGCCQ EEAQFETKKL YAGAILEVCG CKLGRFPQVQ AFVRS DKPKL FRGLQIKYVR GSDPVLKLLD DNGNIAEELS ILKWNTDSVE EFLSEKLERI</p>
Predicted molecular weight	18 kDa including tags
Amino acids	29 to 165
Tags	His tag N-Terminus

Specifications

Our **Abpromise guarantee** covers the use of **ab156315** in the following tested applications.

The application notes include recommended starting dilutions; optimal dilutions/concentrations should be determined by the end user.

Applications	<p>SDS-PAGE</p> <p>Mass Spectrometry</p>
Mass spectrometry	MALDI-TOF
Form	Liquid

Preparation and Storage

Stability and Storage	Shipped at 4°C. Store at +4°C short term (1-2 weeks). Upon delivery aliquot. Store at -20°C or -80°C. Avoid freeze / thaw cycle.
------------------------------	--

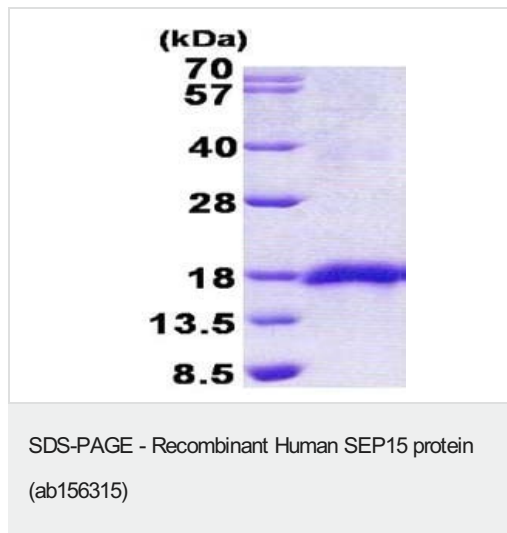
pH: 8.00

Constituents: 0.02% DTT, 0.32% Tris HCl, 10% Glycerol (glycerin, glycerine), 0.88% Sodium chloride

General Info

Function	May be involved in redox reactions associated with the formation of disulfide bonds. May contribute to the quality control of protein folding in the endoplasmic reticulum.
Tissue specificity	Higher levels in prostate and thyroid gland.
Sequence similarities	Belongs to the selenoprotein M/SEP15 family.
Post-translational modifications	The N-terminus is blocked.
Cellular localization	Endoplasmic reticulum lumen. The association with UGGT1/UGCGL1 is essential for its retention in the endoplasmic reticulum.

Images



15% SDS-PAGE analysis of ab156315 (3µg).

Please note: All products are "FOR RESEARCH USE ONLY. NOT FOR USE IN DIAGNOSTIC PROCEDURES"

Our Abpromise to you: Quality guaranteed and expert technical support

- Replacement or refund for products not performing as stated on the datasheet
- Valid for 12 months from date of delivery
- Response to your inquiry within 24 hours
- We provide support in Chinese, English, French, German, Japanese and Spanish
- Extensive multi-media technical resources to help you
- We investigate all quality concerns to ensure our products perform to the highest standards

If the product does not perform as described on this datasheet, we will offer a refund or replacement. For full details of the Abpromise, please visit <https://www.abcam.com/abpromise> or contact our technical team.

Terms and conditions

- Guarantee only valid for products bought direct from Abcam or one of our authorized distributors