

Recombinant Human Septin 11 protein ab153408

1 Image

Description	
Product name	Recombinant Human Septin 11 protein
Expression system	Wheat germ
Protein length	Full length protein
Animal free	No
Nature	Recombinant
Species	Human
Sequence	MAVAVGRPSNEELRNLSLSGHVGFDSLDPQLVNKSTSQ GFCFNILCVGET GIGKSTLMDTLFNTKFESDPATHNEPGVRLKARSYELQES NVRLKLTVD TVGFGDQINKDDSYKPIVEYDAQFEAYLQEELKIKRSLFNY HDTRIHAC LYFIAPTGHSLKSLDLVTMKKLDSKVNIIPIAKADTIAKNELH KFKSKI MSELVSNQVQIYQFPTDEETVAEINATMSVHLPFAVVGST EEVKIGNKMA KARQYPWGVVQVENENHCDFVKLREMLIRVNMEDLREQT HTRHYELYRRC KLEEMGFKDTDPDSKPFSLQETYEAKRNEFLGELQKKKEE EMRQMFVMRVK EKEAELKEAEKELHEKFDLLKRTHQEEKKKVEDKKKELE EEVNNFQKKKA AAQLLSQAQQSGAQQTKKDKDKKNASFT
Amino acids	1 to 429
Tags	GST tag N-Terminus

Specifications	
Our Abpromise guarantee covers the use of ab153408 in the following tested applications.	
The application notes include recommended starting dilutions; optimal dilutions/concentrations should be determined by the end user.	
Applications	ELISA Western blot

Form Liquid

Additional notes

Preparation and Storage

Stability and Storage Shipped on dry ice. Upon delivery aliquot and store at -80°C. Avoid freeze / thaw cycles.
pH: 8.00
Constituents: 0.31% Glutathione, 0.79% Tris HCl

General Info

Function Filament-forming cytoskeletal GTPase. May play a role in cytokinesis (Potential). May play a role in the cytoarchitecture of neurons, including dendritic arborization and dendritic spines, and in GABAergic synaptic connectivity (By similarity). During *Listeria monocytogenes* infection, not required for the bacterial entry process, but restricts its efficacy.

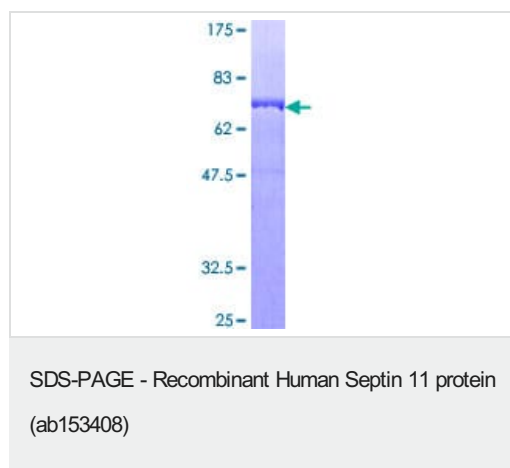
Tissue specificity Widely expressed, except in leukocytes.

Involvement in disease Note=A chromosomal aberration involving SEPT11 may be a cause of chronic neutrophilic leukemia. Translocation t(4;11)(q21;q23) with MLL/HRX.

Sequence similarities Belongs to the septin family.

Cellular localization Cytoplasm > cytoskeleton. Cell junction > synapse. Cell projection > dendritic spine. Cell projection > axon. Partly colocalizes with stress fibers and microtubules. During bacterial infection, displays a collar shape structure next to actin at the pole of invading bacteria.

Images



ab153408 on a 12.5% SDS-PAGE stained with Coomassie Blue.

Please note: All products are "FOR RESEARCH USE ONLY. NOT FOR USE IN DIAGNOSTIC PROCEDURES"

Our Abpromise to you: Quality guaranteed and expert technical support

- Replacement or refund for products not performing as stated on the datasheet

- Valid for 12 months from date of delivery
- Response to your inquiry within 24 hours
- We provide support in Chinese, English, French, German, Japanese and Spanish
- Extensive multi-media technical resources to help you
- We investigate all quality concerns to ensure our products perform to the highest standards

If the product does not perform as described on this datasheet, we will offer a refund or replacement. For full details of the Abpromise, please visit <https://www.abcam.com/abpromise> or contact our technical team.

Terms and conditions

- Guarantee only valid for products bought direct from Abcam or one of our authorized distributors