

Recombinant Human Serglycin protein ab116977

1 Image

Description

Product name	Recombinant Human Serglycin protein
Expression system	Wheat germ
Accession	<u>P10124</u>
Protein length	Full length protein
Animal free	No
Nature	Recombinant
Species	Human
Sequence	MMQKLLKCSRLVLALALILVLESSVQGYPTRRARYQWVRC NPDSNSANCL EEKGPMFELLPGESNKIPRLRTDLFPKTRIQDLNRIFPLSE DYSGSGFGS GSGSGSGSGSGFLTEMEQDYQLVDESDAFHDNLRSLDR NLPSDSQDLGQH GLEEDFML
Predicted molecular weight	43 kDa including tags
Amino acids	1 to 158

Specifications

Our **Abpromise guarantee** covers the use of **ab116977** in the following tested applications.

The application notes include recommended starting dilutions; optimal dilutions/concentrations should be determined by the end user.

Applications	Western blot SDS-PAGE ELISA
Form	Liquid

Preparation and Storage

Stability and Storage	Shipped on dry ice. Upon delivery aliquot and store at -80°C. Avoid freeze / thaw cycles. pH: 8.00 Constituents: 0.3% Glutathione, 0.79% Tris HCl
------------------------------	---

General Info

Function

Plays a role in formation of mast cell secretory granules and mediates storage of various compounds in secretory vesicles. Required for storage of some proteases in both connective tissue and mucosal mast cells and for storage of granzyme B in T lymphocytes. Plays a role in localizing neutrophil elastase in azurophil granules of neutrophils. Mediates processing of MMP2. Plays a role in cytotoxic cell granule-mediated apoptosis by forming a complex with granzyme B which is delivered to cells by perforin to induce apoptosis. Regulates the secretion of TNF-alpha and may also regulate protease secretion. Inhibits bone mineralization.

Sequence similarities

Belongs to the serglycin family.

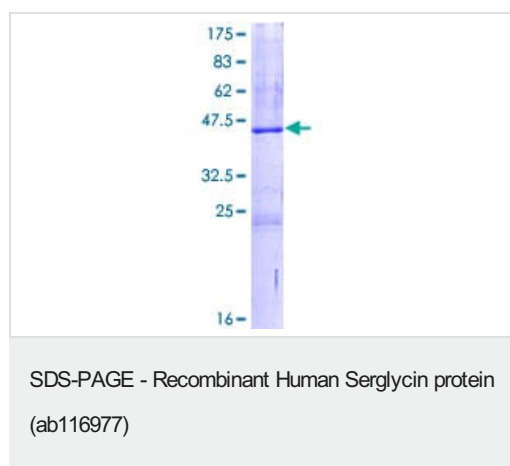
Post-translational modifications

O-glycosylated; contains chondroitin sulfate and heparan sulfate.

Cellular localization

Cytoplasmic granule. Secreted > extracellular space. Golgi apparatus. Found in mast cell granules and in cytoplasmic granules of cytolytic T lymphocytes from where it is secreted upon cell activation. Secreted constitutively by endothelial cells and macrophages. Located to Golgi apparatus during neutrophil differentiation.

Images



12.5% SDS-PAGE showing ab116977 at approximately 43.45kDa. Stained with Coomassie Blue.

Please note: All products are "FOR RESEARCH USE ONLY. NOT FOR USE IN DIAGNOSTIC PROCEDURES"

Our Abpromise to you: Quality guaranteed and expert technical support

- Replacement or refund for products not performing as stated on the datasheet
- Valid for 12 months from date of delivery
- Response to your inquiry within 24 hours
- We provide support in Chinese, English, French, German, Japanese and Spanish
- Extensive multi-media technical resources to help you
- We investigate all quality concerns to ensure our products perform to the highest standards

If the product does not perform as described on this datasheet, we will offer a refund or replacement. For full details of the Abpromise,

please visit <https://www.abcam.com/abpromise> or contact our technical team.

Terms and conditions

- Guarantee only valid for products bought direct from Abcam or one of our authorized distributors