

Product datasheet

Recombinant Human SERINC1 protein ab163575

1 Image

Description

Product name	Recombinant Human SERINC1 protein	
Expression system	Wheat germ	
Protein length	Full length protein	
Animal free	No	
Nature	Recombinant	
Species	Human	
Sequence	<p> MGSVLGLCSMASWIPCLCGSAPCLLCRCCPSGNNSTVT RLYALFLLVGV CVACVMLIPGMEEQLNKIPGFCENEKGVVPCNILVGYKAV YRLCFGLAMF YLLSLLMIKVKSSSDPRAAVHNGFWFFKFAAAIAIIGAFFI PEGTFTT VWFYVGMAGAFCFILQLVLLIDFAHSWNEWVEKMEEGN SRCWYAALLS ATALNYLLSLVAVLFFVYYTHPASCSENKAFISVNMLLCVG ASVMSILP KIQESQPRSGLLQSSVITVYTMYLWTSAMTNEPETNCNPS LLSIIGYNTT STVPKEGQSVQWWHAQGIIGLILFLLCVFYSSIRTSNNSQV NKLTLSDE STLIEDGGARSDGSLEDGDDVHRAVDNERDGVTSYSFF HFMLFLASLYI MMTLTNWYRYEPSREMKSQWTAVVWKISSSWIGMVLVW TLVAPLVLTNR DFD </p>	
Amino acids	1 to 453	
Tags	GST tag N-Terminus	

Specifications

Our **Abpromise guarantee** covers the use of **ab163575** in the following tested applications.

The application notes include recommended starting dilutions; optimal dilutions/concentrations should be determined by the end user.

Applications	ELISA
	Western blot

Form Liquid

Additional notes

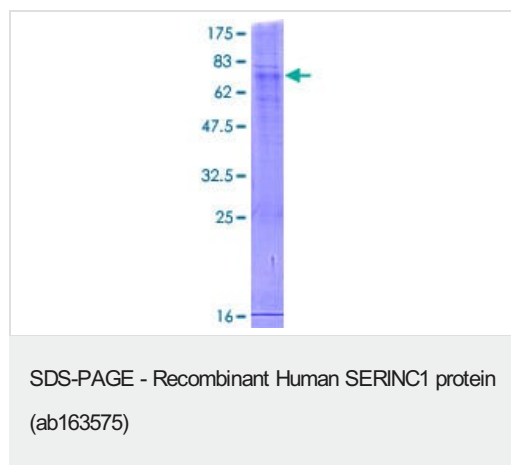
Preparation and Storage

Stability and Storage Shipped on dry ice. Upon delivery aliquot and store at -80°C. Avoid freeze / thaw cycles.
pH: 8.00
Constituents: 0.31% Glutathione, 0.79% Tris HCl

General Info

Function Enhances the incorporation of serine into phosphatidylserine and sphingolipids.
Sequence similarities Belongs to the TDE1 family.
Cellular localization Endoplasmic reticulum membrane.

Images



ab163575 on a 12.5% SDS-PAGE stained with Coomassie Blue.

Please note: All products are "FOR RESEARCH USE ONLY. NOT FOR USE IN DIAGNOSTIC PROCEDURES"

Our Abpromise to you: Quality guaranteed and expert technical support

- Replacement or refund for products not performing as stated on the datasheet
- Valid for 12 months from date of delivery
- Response to your inquiry within 24 hours

- We provide support in Chinese, English, French, German, Japanese and Spanish
- Extensive multi-media technical resources to help you
- We investigate all quality concerns to ensure our products perform to the highest standards

If the product does not perform as described on this datasheet, we will offer a refund or replacement. For full details of the Abpromise,

please visit <https://www.abcam.com/abpromise> or contact our technical team.

Terms and conditions

- Guarantee only valid for products bought direct from Abcam or one of our authorized distributors