

Recombinant Human SERPINB1/PI2 protein ab114774

1 References 1 Image

Description

Product name	Recombinant Human SERPINB1/PI2 protein		
Expression system	Wheat germ		
Accession	P30740		
Protein length	Full length protein		
Animal free	No		
Nature	Recombinant		
Species	Human		
Sequence	MEQLSSANTRFALDLFLALSENNPAGNIFISPFSSAMAM VFLGTRGNT AAQLSKTFHFNTVEEVHSRFQSLNADINKRGASYILKLANR LYGEKTYNF LPEFLVSTQKTYGADLASVDFQHASEDARKTINQWVKGQ TEGKIPELLAS GMVDNMTKLVLVNAYFKGNWKDKFMKEATTNAPFRLNK KDRKTVKMMYQ KKKFAYGYIEDLKCRVLELPYQGEELSMVILLPDDIEDEST GLKKIEEQL TLEKLHEWTKPENLDFIEVNVSLPRFKLEESYTLNSDLARL GVQDLFNSS KADLSGMSGARDIFISKVHKSFVEVNEEGTEAAAATAGIA TFCMLMPEE NFTADHPFLFFIRHNSSGSILFLGRFSSP		
Predicted molecular weight	67 kDa including tags		
Amino acids	1 to 379		
Tags	GST tag N-Terminus		

Specifications

Our **Abpromise guarantee** covers the use of **ab114774** in the following tested applications.

The application notes include recommended starting dilutions; optimal dilutions/concentrations should be determined by the end user.

Applications	ELISA
	SDS-PAGE
	Western blot

Form	Liquid
Additional notes	This product was previously labelled as SERPINB1.

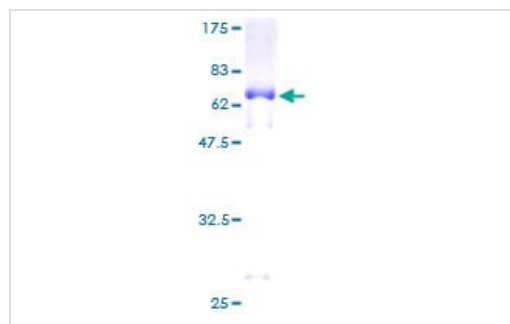
Preparation and Storage

Stability and Storage	Shipped on dry ice. Upon delivery aliquot and store at -80°C. Avoid freeze / thaw cycles. pH: 8.00 Constituents: 0.3% Glutathione, 0.79% Tris HCl
------------------------------	---

General Info

Function	Regulates the activity of the neutrophil proteases elastase, cathepsin G, proteinase-3, chymase, chymotrypsin, and kallikrein-3.
Sequence similarities	Belongs to the serpin family. Ov-serpin subfamily.
Domain	Reactive bond 1 is specific for reaction with chymotrypsin-like protease such as cathepsin G, chymotrypsin or chymase, while reactive bond 2 is specific for reaction with elastase-like protease such as neutrophil elastase, proteinase-3, pancreatic elastase or PSA.
Cellular localization	Cytoplasm.

Images



ab114774 analysed on a 12.5% SDS-PAGE gel stained with Coomassie Blue.

SDS-PAGE - Recombinant Human SERPINB1/PI2 protein (ab114774)

Please note: All products are "FOR RESEARCH USE ONLY. NOT FOR USE IN DIAGNOSTIC PROCEDURES"

Our Abpromise to you: Quality guaranteed and expert technical support

- Replacement or refund for products not performing as stated on the datasheet
- Valid for 12 months from date of delivery
- Response to your inquiry within 24 hours
- We provide support in Chinese, English, French, German, Japanese and Spanish

- Extensive multi-media technical resources to help you
- We investigate all quality concerns to ensure our products perform to the highest standards

If the product does not perform as described on this datasheet, we will offer a refund or replacement. For full details of the Abpromise, please visit <https://www.abcam.com/abpromise> or contact our technical team.

Terms and conditions

- Guarantee only valid for products bought direct from Abcam or one of our authorized distributors