

Product datasheet

Recombinant human Serum Amyloid A (mutated D60N + H71R) protein ab50232

1 Image

Description

Product name	Recombinant human Serum Amyloid A (mutated D60N + H71R) protein	
Biological activity	Tested by its ability to down- regulate lipid biosynthesis in aortic smooth muscle cells. The effective concentration was found to be 4 µM. Schreiber, BM. et al. Biochem J. 1999 Nov 15; 344 Pt 1:7-13	
Purity	>= 98 % SDS-PAGE. >=98% by SDS-PAGE and HPLC analyses.	
Endotoxin level	< 0.100 Eu/µg	
Expression system	Escherichia coli	
Accession	<u>P0DJ18</u>	
Protein length	Full length protein	
Animal free	No	
Nature	Recombinant	
Species	Human	
Sequence	MRSFFSFLGE AFDGARDMWR AYSDMREANY IGSDKYFHAR GNYDAAKRGV GGVWAAEAS NARENIQRFF GRGAEDSLAD QAANEWGRSG KDPNHFRPAG LPEKY	
Predicted molecular weight	12 kDa	
Modifications	mutated D60N + H71R	

Specifications

Our **Abpromise guarantee** covers the use of **ab50232** in the following tested applications.

The application notes include recommended starting dilutions; optimal dilutions/concentrations should be determined by the end user.

Applications	SDS-PAGE Functional Studies Western blot
Form	Lyophilized
Additional notes	For most in vitro applications, apo-SAA exerts its biological activity in the concentration range of

10-50 µg/ml. ab50232 can be used as a WB positive control in conjunction with [ab687](#).

Preparation and Storage

Stability and Storage

Shipped at 4°C. Upon delivery aliquot and store at -20°C. Avoid freeze / thaw cycles.

This product is an active protein and may elicit a biological response in vivo, handle with caution.

Reconstitution

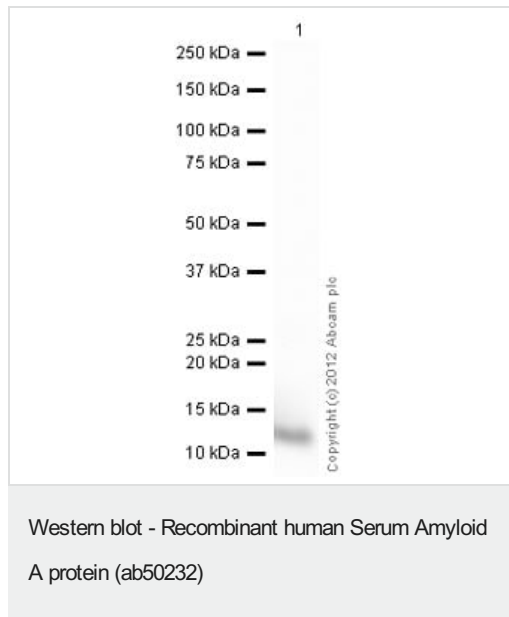
Please reconstitute this product in water to a concentration of 1mg/ml.

General Info

Relevance

Function: Major acute phase reactant. Apolipoprotein of the HDL complex. Tissue specificity: Expressed by the liver; secreted in plasma. Disease: Note=Reactive, secondary amyloidosis is characterized by the extracellular accumulation in various tissues of the SAA protein. These deposits are highly insoluble and resistant to proteolysis; they disrupt tissue structure and compromise function. Note=Elevated serum SAA protein levels may be associated with lung cancer. Similarity: Belongs to the SAA family. PTM: This protein is the precursor of amyloid protein A, which is formed by the removal of approximately 24 residues from the C-terminal end.

Images



Anti-Serum Amyloid A antibody [115] ([ab687](#)) at 0.5 µg/ml +
Recombinant human Serum Amyloid A (mutated D60N + H71R)
protein (ab50232) at 0.01 µg

Secondary

Goat Anti-Mouse IgG H&L (HRP) preadsorbed ([ab97040](#)) at
1/5000 dilution

Developed using the ECL technique.

Performed under reducing conditions.

Exposure time: 1 minute

Please note: All products are "FOR RESEARCH USE ONLY. NOT FOR USE IN DIAGNOSTIC PROCEDURES"

Our Abpromise to you: Quality guaranteed and expert technical support

- Replacement or refund for products not performing as stated on the datasheet
- Valid for 12 months from date of delivery
- Response to your inquiry within 24 hours

- We provide support in Chinese, English, French, German, Japanese and Spanish
- Extensive multi-media technical resources to help you
- We investigate all quality concerns to ensure our products perform to the highest standards

If the product does not perform as described on this datasheet, we will offer a refund or replacement. For full details of the Abpromise, please visit <https://www.abcam.com/abpromise> or contact our technical team.

Terms and conditions

- Guarantee only valid for products bought direct from Abcam or one of our authorized distributors