

Product datasheet

Recombinant Human SGLT2 protein ab114508

1 Image

Description

Product name	Recombinant Human SGLT2 protein	
Expression system	Wheat germ	
Accession	<b>P31639</b>	
Protein length	Protein fragment	
Animal free	No	
Nature	Recombinant	
Species	Human	
Sequence	GLFDKYLGAATSLTVSEDPVAGNISSFCYRPRPDSYHLLR HPVTGDLPWP	
Predicted molecular weight	31 kDa including tags	
Amino acids	228 to 277	

Specifications

Our **Abpromise guarantee** covers the use of **ab114508** in the following tested applications.

The application notes include recommended starting dilutions; optimal dilutions/concentrations should be determined by the end user.

Applications	ELISA
	SDS-PAGE
	Western blot
Form	Liquid

Preparation and Storage

Stability and Storage	Shipped on dry ice. Upon delivery aliquot and store at -80°C. Avoid freeze / thaw cycles. pH: 8.00 Constituents: 0.3% Glutathione, 0.79% Tris HCl
-----------------------	---

General Info

Function	Sodium-dependent glucose transporter. Has a Na(+) to glucose coupling ratio of 1:1.
----------	---

Efficient substrate transport in mammalian kidney is provided by the concerted action of a low affinity high capacity and a high affinity low capacity Na(+)/glucose cotransporter arranged in series along kidney proximal tubules.

#### Involvement in disease

Defects in SLC5A2 are the cause of renal glucosuria (GLYS1) [MIM:233100]. GLYS1 is an autosomal recessive disorder characterized by a normal fasting serum glucose concentration and persistent isolated glucosuria, with a normal glucose tolerance test.

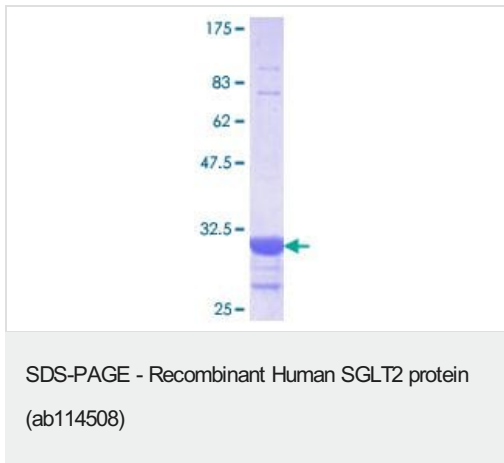
#### Sequence similarities

Belongs to the sodium:solute symporter (SSF) (TC 2.A.21) family.

#### Cellular localization

Membrane.

### Images



ab114508 analysed by 12.5% SDS-PAGE and stained with Coomassie Blue.

**Please note:** All products are "FOR RESEARCH USE ONLY. NOT FOR USE IN DIAGNOSTIC PROCEDURES"

### Our Abpromise to you: Quality guaranteed and expert technical support

- Replacement or refund for products not performing as stated on the datasheet
- Valid for 12 months from date of delivery
- Response to your inquiry within 24 hours
- We provide support in Chinese, English, French, German, Japanese and Spanish
- Extensive multi-media technical resources to help you
- We investigate all quality concerns to ensure our products perform to the highest standards

If the product does not perform as described on this datasheet, we will offer a refund or replacement. For full details of the Abpromise, please visit <https://www.abcam.com/abpromise> or contact our technical team.

### Terms and conditions

- Guarantee only valid for products bought direct from Abcam or one of our authorized distributors