

## Product datasheet

# Recombinant Human SHCBP1 protein ab164118

1 Image

### Description

<b>Product name</b>	Recombinant Human SHCBP1 protein
<b>Expression system</b>	Wheat germ
<b>Protein length</b>	Full length protein
<b>Animal free</b>	No
<b>Nature</b>	Recombinant
<b>Species</b>	Human

**Sequence**

```
MADGSLTGGGLEAAAMAPERTGWAVEQELASLEKGLFQ
DEDSCSDCSYRD
KPGSSLQSFMPGKTFPFPEIFQTNQLLFYERFRAYQDYILA
DCKASEVQE
FTAEFLEKVLPSGWRAVWHTNVFKVLVEITDVFDAALKA
VVRLAEPYLC
DSQVSTFTMECMKELLDLKEHRLPLQELWVVFDDSGVF
DQTALAIHVRF
FYQNWRSWDEEEDEYDYFVRCVEPRLRLHYDILED RVP
SGLVDYHNL
LSQCEESYRKFLNLRSSLSNCNSDSEQENISMVEGLKLYS
EMEQLKQKLG
LIENPLLRVYVFGYQKNSNIQAKGVRSSGQKITHVVSS MMA
GLLRSLTD
RLCQEPGEEEREIQFHS DPLSAINACFEGDTVIVCPGHV
VHGTF SIADS
IELEGYGLPDDMIEKR GKD TFVDCTGADIKISGKIFVQHD
AVEGILV
HRGKTTLENCVLQCETTGVTVRTSAEFLMKNSDLYGAKG
AGIEYPGSQC
T LSDNGIHHCKE GILIKDFLDEHYDIPKISMVNNIIHNEGYG
VVLVKPT
IFSDLQESAEDGTEENKALKIQTS GEPDVAERVDLEELIEC
ATGKMELCA
RTDPSEQVEGNCEMNELIAASTQKGQIKKRLSELGITQA
DDNLMSQEM FVGIVGNQFKWNGKGSFGTFLF
```

<b>Amino acids</b>	1 to 672
<b>Tags</b>	GST tag N-Terminus

## Specifications

---

Our **Abpromise guarantee** covers the use of **ab164118** in the following tested applications.

The application notes include recommended starting dilutions; optimal dilutions/concentrations should be determined by the end user.

**Applications** ELISA  
Western blot

**Form** Liquid

**Additional notes**

## Preparation and Storage

---

**Stability and Storage** Shipped on dry ice. Upon delivery aliquot and store at -80°C. Avoid freeze / thaw cycles.  
pH: 8.00  
Constituents: 0.31% Glutathione, 0.79% Tris HCl

## General Info

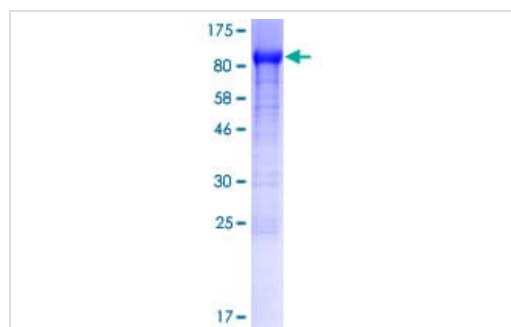
---

**Function** May play a role in signaling pathways governing cellular proliferation, cell growth and differentiation. May be a component of a novel signaling pathway downstream of Shc. Acts as a positive regulator of FGF signaling in neural progenitor cells.

**Sequence similarities** Contains 5 PbH1 repeats.

## Images

---



ab164118 on a 12.5% SDS-PAGE stained with Coomassie Blue.

SDS-PAGE - Recombinant Human SHCBP1 protein  
(ab164118)

**Please note:** All products are "FOR RESEARCH USE ONLY. NOT FOR USE IN DIAGNOSTIC PROCEDURES"

## Our Abpromise to you: Quality guaranteed and expert technical support

---

- Replacement or refund for products not performing as stated on the datasheet

- Valid for 12 months from date of delivery
- Response to your inquiry within 24 hours
  
- We provide support in Chinese, English, French, German, Japanese and Spanish
- Extensive multi-media technical resources to help you
- We investigate all quality concerns to ensure our products perform to the highest standards

If the product does not perform as described on this datasheet, we will offer a refund or replacement. For full details of the Abpromise, please visit <https://www.abcam.com/abpromise> or contact our technical team.

### **Terms and conditions**

---

- Guarantee only valid for products bought direct from Abcam or one of our authorized distributors