

Recombinant Human SLAIN2 protein ab163604

1 Image

Description	
Product name	Recombinant Human SLAIN2 protein
Expression system	Wheat germ
Protein length	Full length protein
Animal free	No
Nature	Recombinant
Species	Human
Sequence	<div>MQEESLRQEYAATTSSRRSSGSSCNSTRRGTFSDQELDAQ SLDDEDDNMHH AVYPAVNRFSPSPRNSPRSPKQSPRNSPRSRSPARGIE YSRVSPQPMIS RLQQPRLSLQGHPTDLQTSNVKNEEKLRRSLPNLSRTSNT QVDSVKSSRS DSNFQVPNGGIPRMQPQASAIPSPGKFRSPAAPSPLALR QPVKAFSNHGS GSPGSQEITQLTQTSSPGPPMVQSTVSANPPSNINSATL TRPAGTTAMR SGLPRPSAPSAGGIPVPRSKLAQPVRRSLPAPKTYGSMK DDSWKDGCY</div>
Amino acids	1 to 298
Tags	GST tag N-Terminus

Specifications	
Our Abpromise guarantee covers the use of ab163604 in the following tested applications.	
The application notes include recommended starting dilutions; optimal dilutions/concentrations should be determined by the end user.	
Applications	<div>ELISA</div> <div>Western blot</div>
Form	Liquid
Additional notes	

Preparation and Storage

Stability and Storage

Shipped on dry ice. Upon delivery aliquot and store at -80°C. Avoid freeze / thaw cycles.

pH: 8.00

Constituents: 0.31% Glutathione, 0.79% Tris HCl

General Info

Function

Binds to the plus end of microtubules and regulates microtubule dynamics and microtubule organization. Promotes cytoplasmic microtubule nucleation and elongation. Required for normal structure of the microtubule cytoskeleton during interphase.

Tissue specificity

Widely expressed with highest levels in adult liver, testis and ovary, and lowest levels in adult pancreas and spleen and in fetal brain.

Sequence similarities

Belongs to the SLAIN motif-containing family.

Domain

The N-terminus forms a two-stranded coiled coil.

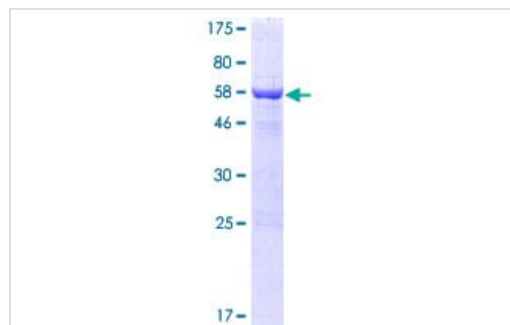
Post-translational modifications

Is highly phosphorylated during mitosis, but not during interphase. The highly phosphorylated form does not localize at microtubule plus ends and does not interact with MAPRE1 or CKAP5.

Cellular localization

Cytoplasm > cytoskeleton. Colocalizes with microtubules. Detected at the plus end of growing microtubules.

Images



SDS-PAGE - Recombinant Human SLAIN2 protein
(ab163604)

ab163604 on a 12.5% SDS-PAGE stained with Coomassie Blue.

Please note: All products are "FOR RESEARCH USE ONLY. NOT FOR USE IN DIAGNOSTIC PROCEDURES"

Our Abpromise to you: Quality guaranteed and expert technical support

- Replacement or refund for products not performing as stated on the datasheet
- Valid for 12 months from date of delivery
- Response to your inquiry within 24 hours
- We provide support in Chinese, English, French, German, Japanese and Spanish
- Extensive multi-media technical resources to help you

- We investigate all quality concerns to ensure our products perform to the highest standards

If the product does not perform as described on this datasheet, we will offer a refund or replacement. For full details of the Abpromise, please visit <https://www.abcam.com/abpromise> or contact our technical team.

Terms and conditions

- Guarantee only valid for products bought direct from Abcam or one of our authorized distributors