

Product datasheet

Recombinant Human SLC25A11 protein ab152862

1 Image

Description	
Product name	Recombinant Human SLC25A11 protein
Expression system	Wheat germ
Accession	<u>Q02978</u>
Protein length	Full length protein
Animal free	No
Nature	Recombinant
Species	Human
Sequence	MAATASAGAGGIDGKPRTSPKSVKFLFGGLAGMGATV FVQPLDLVKNRMQ LSGEGAKTREYKTSFHALTSILKAEGLRGIYGLSAGLLRQ ATYTTTRLG YTVLFRLTGADGTPPGFLLKAVIGMTAGATGAFVGTPAE VALIRMTAD GRLPADQRRGYKNVFNALIRITREEGVLTWLRGCIPTMARA VVVNAAQLA SYSQSKQFLLDSGYFSDNILCHFCASMISGLVTTAASMPV DIAKTRIQNM RMIDGKPEYKNGLDVLFKVVRYEGFFSLWKGFTPYARLG PHTVLTIFLEQMKNKAYKRLFLSG
Predicted molecular weight	60 kDa including tags
Amino acids	1 to 314

Specifications	
Our Abpromise guarantee covers the use of ab152862 in the following tested applications.	
The application notes include recommended starting dilutions; optimal dilutions/concentrations should be determined by the end user.	
Applications	ELISA Western blot SDS-PAGE
Form	Liquid
Additional notes	

Preparation and Storage

Stability and Storage

Shipped on dry ice. Upon delivery aliquot and store at -80°C. Avoid freeze / thaw cycles.

pH: 8.00

Constituents: 0.31% Glutathione, 0.79% Tris HCl

General Info

Function

Catalyzes the transport of 2-oxoglutarate across the inner mitochondrial membrane in an electroneutral exchange for malate or other dicarboxylic acids, and plays an important role in several metabolic processes, including the malate-aspartate shuttle, the oxoglutarate/isocitrate shuttle, in gluconeogenesis from lactate, and in nitrogen metabolism.

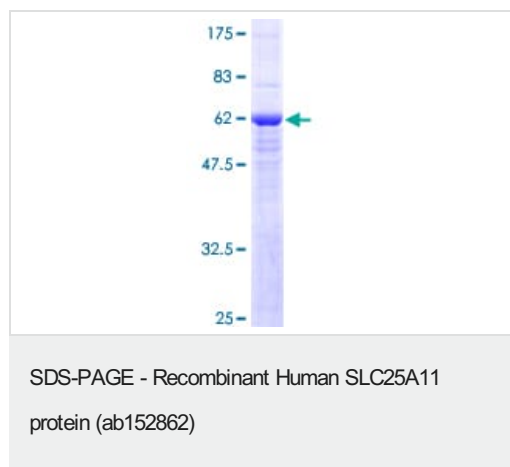
Sequence similarities

Belongs to the mitochondrial carrier family.
Contains 3 Solcar repeats.

Cellular localization

Mitochondrion inner membrane.

Images



12.5% SDS-PAGE analysis of ab152862 stained with Coomassie Blue.

Please note: All products are "FOR RESEARCH USE ONLY. NOT FOR USE IN DIAGNOSTIC PROCEDURES"

Our Abpromise to you: Quality guaranteed and expert technical support

- Replacement or refund for products not performing as stated on the datasheet
- Valid for 12 months from date of delivery
- Response to your inquiry within 24 hours
- We provide support in Chinese, English, French, German, Japanese and Spanish
- Extensive multi-media technical resources to help you
- We investigate all quality concerns to ensure our products perform to the highest standards

If the product does not perform as described on this datasheet, we will offer a refund or replacement. For full details of the Abpromise, please visit <https://www.abcam.com/abpromise> or contact our technical team.

Terms and conditions

- Guarantee only valid for products bought direct from Abcam or one of our authorized distributors