

Recombinant Human SLC28A2 protein ab160363

1 Image

Description

| | |
|-------------------|--|
| Product name | Recombinant Human SLC28A2 protein |
| Expression system | Wheat germ |
| Protein length | Full length protein |
| Animal free | No |
| Nature | Recombinant |
| Species | Human |
| Sequence | MEKASGRQSIALSTVETGTVPNGLELMEKEVEPEGSKRT DAQGHS LGDGL GPSTYQRRSRWPFSKARSFCKTHASLFKKILLGLLCLAYA AYLLAACILN FQRALALFVITCLVIFVLVHSFLKKLLGKKLTRCLKPFENSR LRLWTKWV FAGVSLVGLILWLALDTAQRPEQLIPFAGICMFILFACSKH HSAVSWR TVFSGLG LQFVF GILVIRTDLG YTVFQWLGEQVQIFLNYTVA GSSFVFGD TLVKDVFAFQALP IIIFFGCVVSILYYLGLVQWVVQKVAWFL QITMGTTA TETLAVAGNIFVGMTEAPLLIRPYLGDMTLSEIHAVMTGGF ATISGTVLG AFIAFGVDASSLISASVMAAPCALASSKLAYPEVEESKFK SEEGVKLPRG KERNVLEAASNGAVDAIGLATNVAANLIAFLAVLAFINAALS WLGELVDI QGLTFQVICSYLLRPMVFM MGVEWTD CPMVAEMVGKFFI NEFVAYQQLS QYKNKRLSGMEEWIEGEKQWISVRAE IITFSLCGFANLSSI GITLGGLT SIVPHRKSDLSKV VVRALFTGACVSLISACMAGILYVPRGA EADCVSFPN TSFTNRTYETYMCCRGLFQSTSLNGTNPPSFSGPWEDKE FSAMALTNCCG FYNNTVCA |
| Amino acids | 1 to 658 |
| Tags | GST tag N-Terminus |

Specifications

Our **Abpromise guarantee** covers the use of **ab160363** in the following tested applications.

The application notes include recommended starting dilutions; optimal dilutions/concentrations should be determined by the end user.

| | |
|-------------------------|--------------|
| Applications | ELISA |
| | Western blot |
| Form | Liquid |
| Additional notes | |

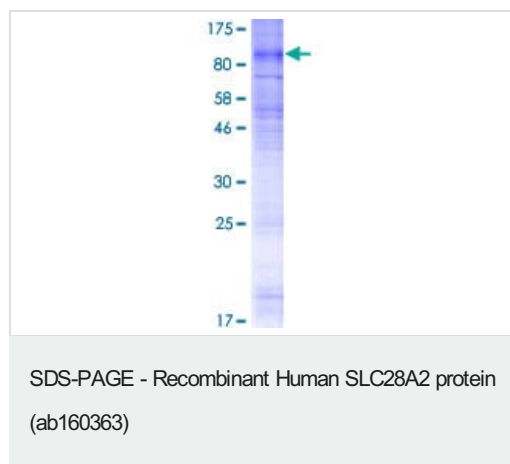
Preparation and Storage

| | |
|------------------------------|---|
| Stability and Storage | Shipped on dry ice. Upon delivery aliquot and store at -80°C. Avoid freeze / thaw cycles. |
| | pH: 8.00 |
| | Constituents: 0.31% Glutathione, 0.79% Tris HCl |

General Info

| | |
|------------------------------|---|
| Function | Sodium-dependent and purine-selective transporter. Exhibits the transport characteristics of the nucleoside transport system cif or N1 subtype (N1/cif) (selective for purine nucleosides and uridine). Plays a critical role in specific uptake and salvage of purine nucleosides in kidney and other tissues. |
| Tissue specificity | Expressed in heart and skeletal muscle followed by liver, kidney, intestine, pancreas, placenta and brain. Weak expression in lung. |
| Sequence similarities | Belongs to the concentrative nucleoside transporter (CNT) (TC 2.A.41) family. |
| Cellular localization | Membrane. |

Images



ab160363 on a 12.5% SDS-PAGE stained with Coomassie Blue.

Please note: All products are "FOR RESEARCH USE ONLY. NOT FOR USE IN DIAGNOSTIC PROCEDURES"

Our Abpromise to you: Quality guaranteed and expert technical support

- Replacement or refund for products not performing as stated on the datasheet
- Valid for 12 months from date of delivery
- Response to your inquiry within 24 hours

- We provide support in Chinese, English, French, German, Japanese and Spanish
- Extensive multi-media technical resources to help you
- We investigate all quality concerns to ensure our products perform to the highest standards

If the product does not perform as described on this datasheet, we will offer a refund or replacement. For full details of the Abpromise, please visit <https://www.abcam.com/abpromise> or contact our technical team.

Terms and conditions

- Guarantee only valid for products bought direct from Abcam or one of our authorized distributors