

Recombinant Human sPLA2-IIe protein ab63845

1 Image

Description

Product name	Recombinant Human sPLA2-IIe protein
Purity	> 95 % SDS-PAGE.
Expression system	Escherichia coli
Protein length	Full length protein
Animal free	No
Nature	Recombinant
Species	Human
Sequence	MRGSHHHHHH GMASHMNLVQ FGVMEIKMTG KSALQYNDYG CYCGIGGSHW PVDQTDWCCH AHDCCYGRLE KLGCEPKLEK YLFSVSEGI FCAGRITTCQR LTCECDKRAA LCFRRNLGTY NRKYAHYPNK LCTGPTPPC
Amino acids	20 to 142

Specifications

Our **Abpromise guarantee** covers the use of **ab63845** in the following tested applications.

The application notes include recommended starting dilutions; optimal dilutions/concentrations should be determined by the end user.

Applications	Western blot SDS-PAGE
Form	Lyophilized
Additional notes	Previously labelled as Phospholipase A2 IIE.

Preparation and Storage

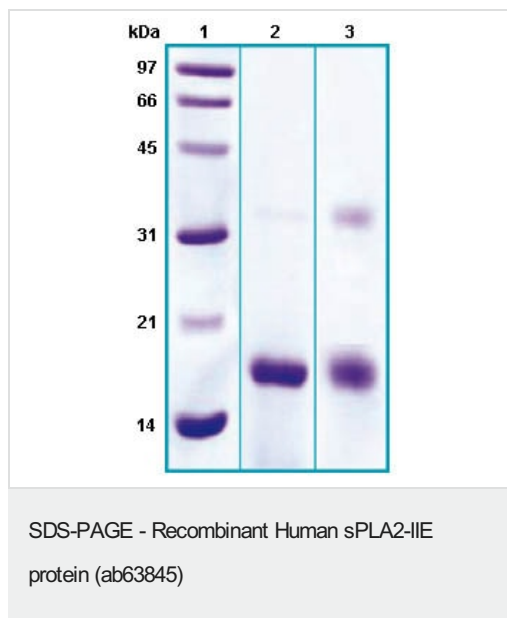
Stability and Storage	Shipped at 4°C. Upon delivery aliquot and store at -20°C. Avoid freeze / thaw cycles. Constituent: 0.41% Sodium acetate
Reconstitution	Add 0.1M Acetate buffer pH4 to prepare a working stock solution of approximately 0.5 mg/ml and let the lyophilized pellet dissolve completely. For conversion into higher pH value, we recommend

intensive dilution by relevant buffer to a concentration of 10µg/ml. In higher concentrations the solubility of this antigen is limited. Product is not sterile! Please filter the product by an appropriate sterile filter before using it in the cell culture.

General Info

Function	PA2 catalyzes the calcium-dependent hydrolysis of the 2-acyl groups in 3-sn-phosphoglycerides. Has a preference for arachidonic-containing phospholipids.
Tissue specificity	Restricted to the brain, heart, lung, and placenta.
Sequence similarities	Belongs to the phospholipase A2 family.
Cellular localization	Secreted.

Images



12% SDS-PAGE separation of ab63845. Molecular Weight: ~15.8 kDa.

Lane 1. Molecular weight marker

Lane 2. reduced and heated sample, 5µg/lane

Lane 3. non-reduced and non-heated sample, 5µg/lane

Please note: All products are "FOR RESEARCH USE ONLY. NOT FOR USE IN DIAGNOSTIC PROCEDURES"

Our Abpromise to you: Quality guaranteed and expert technical support

- Replacement or refund for products not performing as stated on the datasheet
- Valid for 12 months from date of delivery
- Response to your inquiry within 24 hours
- We provide support in Chinese, English, French, German, Japanese and Spanish
- Extensive multi-media technical resources to help you
- We investigate all quality concerns to ensure our products perform to the highest standards

If the product does not perform as described on this datasheet, we will offer a refund or replacement. For full details of the Abpromise, please visit <https://www.abcam.com/abpromise> or contact our technical team.

Terms and conditions

- Guarantee only valid for products bought direct from Abcam or one of our authorized distributors