

Recombinant Human SPSB2 protein ab134592

1 Image

Description	
Product name	Recombinant Human SPSB2 protein
Purity	> 85 % SDS-PAGE. ab134592 is purified using conventional chromatography techniques.
Expression system	Escherichia coli
Accession	<u>Q99619</u>
Protein length	Full length protein
Animal free	No
Nature	Recombinant
Species	Human
Sequence	MGSSHHHHHHSSGLVPRGSHMGSHMGQTALAGGSSSTP TPQALYPDLSCP EGLEELLSAPPPDLGAQRRHGWNPKDCSENIEVKEGGLY FERRPVAQSTD GARGKRGYSRGLHAWAISWPLEQRGTHAVVGVATALAPL QTDHYAALLGS NSESWGWDIGRGKLYHQSKGPGAPQYPAGTQGEQLEVP ERLLVVLDMEEG TLGYAIGGTYLGPAFRGLKGRTLYPAVSAVWGQCQVRIRYL GERRAEPHS LLHLSRLCVRHNLGDTRLGQVSALPLPPAMKRYLLYQ
Predicted molecular weight	31 kDa including tags
Amino acids	1 to 263
Tags	His tag N-Terminus

Specifications	
Our Abpromise guarantee covers the use of ab134592 in the following tested applications.	
The application notes include recommended starting dilutions; optimal dilutions/concentrations should be determined by the end user.	
Applications	SDS-PAGE Mass Spectrometry
Mass spectrometry	MALDI-TOF

Form Liquid

Preparation and Storage

Stability and Storage Shipped at 4°C. Store at +4°C short term (1-2 weeks). Upon delivery aliquot. Store at -20°C or -80°C. Avoid freeze / thaw cycle.

pH: 8.00

Constituents: 0.02% DTT, 0.32% Tris HCl, 20% Glycerol (glycerin, glycerine), 0.88% Sodium chloride

General Info

Function Probable substrate recognition component of a SCF-like ECS (Elongin BC-CUL2/5-SOCS-box protein) E3 ubiquitin-protein ligase complex which mediates the ubiquitination and subsequent proteasomal degradation of target proteins.

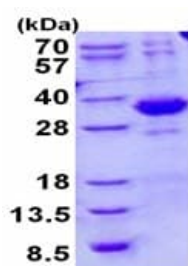
Pathway Protein modification; protein ubiquitination.

Sequence similarities Belongs to the SPSB family.
Contains 1 B30.2/SPRY domain.
Contains 1 SOCS box domain.

Domain The SOCS box domain mediates the interaction with the Elongin BC complex, an adapter module in different E3 ubiquitin ligase complexes.

Cellular localization Cytoplasm.

Images



15% SDS-PAGE analysis of 3 µg ab134592.

SDS-PAGE - Recombinant Human SPSB2 protein
(ab134592)

Please note: All products are "FOR RESEARCH USE ONLY. NOT FOR USE IN DIAGNOSTIC PROCEDURES"

Our Abpromise to you: Quality guaranteed and expert technical support

- Replacement or refund for products not performing as stated on the datasheet
- Valid for 12 months from date of delivery
- Response to your inquiry within 24 hours

- We provide support in Chinese, English, French, German, Japanese and Spanish
- Extensive multi-media technical resources to help you
- We investigate all quality concerns to ensure our products perform to the highest standards

If the product does not perform as described on this datasheet, we will offer a refund or replacement. For full details of the Abpromise, please visit <https://www.abcam.com/abpromise> or contact our technical team.

Terms and conditions

- Guarantee only valid for products bought direct from Abcam or one of our authorized distributors