

Product datasheet

Recombinant Human SR1 protein ab104927

1 Image

Description

Product name	Recombinant Human SR1 protein
Purity	> 90 % SDS-PAGE. ab104927 was purified using conventional chromatography.
Expression system	Escherichia coli
Accession	<u>P30626</u>
Protein length	Full length protein
Animal free	No
Nature	Recombinant
Species	Human
Sequence	MGSSHHHHHH SSGLVPRGSH MGS MAYPGHP GAGGGYYPGG YGGAPGGPAF PGQTQDPLYG YFAAVAGQDG QIDADELQRC LTQSGIAGGY KPFNLETCRL MVSMLDRDMS GTMGFNEFKE LWAVLNGWRQ HFISFDTDRS GTVDPQELQK ALTTMGFRLS PQAVNSIAKR YSTNGKITFD DYIACCVKLR ALTDSFRRRD TAQQGVVNFY YDDFIQCVMS V
Predicted molecular weight	24 kDa including tags
Amino acids	1 to 198
Tags	His tag N-Terminus

Specifications

Our **Abpromise guarantee** covers the use of **ab104927** in the following tested applications.

The application notes include recommended starting dilutions; optimal dilutions/concentrations should be determined by the end user.

Applications	Mass Spectrometry SDS-PAGE
Mass spectrometry	MALDI-TOF
Form	Liquid

Preparation and Storage

Stability and Storage

Shipped at 4°C. Store at +4°C short term (1-2 weeks). Upon delivery aliquot. Store at -20°C or -80°C. Avoid freeze / thaw cycle.

pH: 8.00

Constituents: 1.16% Sodium chloride, 40% Glycerol (glycerin, glycerine), 0.316% Tris HCl, 0.0154% DTT, 0.00174% PMSF

General Info

Function

Calcium-binding protein that modulates excitation-contraction coupling in the heart. Contributes to calcium homeostasis in the heart sarcoplasmic reticulum. Modulates the activity of RYR2 calcium channels.

Tissue specificity

Detected in cardiac myocytes.

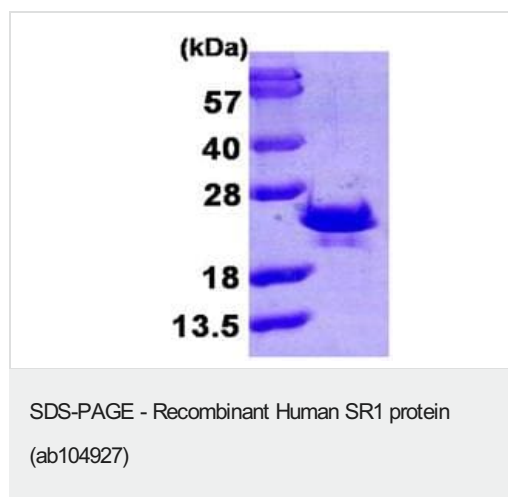
Sequence similarities

Contains 4 EF-hand domains.

Cellular localization

Cytoplasm. Sarcoplasmic reticulum membrane. Relocates to the sarcoplasmic reticulum membrane in response to elevated calcium levels.

Images



15% SDS-PAGE analysis of 3ug ab104927

Please note: All products are "FOR RESEARCH USE ONLY. NOT FOR USE IN DIAGNOSTIC PROCEDURES"

Our Abpromise to you: Quality guaranteed and expert technical support

- Replacement or refund for products not performing as stated on the datasheet
- Valid for 12 months from date of delivery
- Response to your inquiry within 24 hours
- We provide support in Chinese, English, French, German, Japanese and Spanish
- Extensive multi-media technical resources to help you
- We investigate all quality concerns to ensure our products perform to the highest standards

If the product does not perform as described on this datasheet, we will offer a refund or replacement. For full details of the Abpromise, please visit <https://www.abcam.com/abpromise> or contact our technical team.

Terms and conditions

- Guarantee only valid for products bought direct from Abcam or one of our authorized distributors