

Product datasheet

Recombinant Human Stathmin 1 protein ab87492

[1 References](#) [2 Images](#)

Description

| | |
|--|--|
| Product name | Recombinant Human Stathmin 1 protein |
| Purity | > 95 % SDS-PAGE. ab87492 is purified using conventional chromatography techniques. |
| Expression system | Escherichia coli |
| Protein length | Full length protein |
| Animal free | No |
| Nature | Recombinant |
| Species | Human |
| Sequence | MGSSHHHHHH SSGLVPRGSH MASSDIQVKE LEKRASGQAF ELILSPRSKE SVPEFPLSPP KKKDLSLEEI QKKLEAAEER RKSHEAEVLK QLAEKREHEK EVLQKAIEEN NNFSKMAEEK LTHKMEANKE NREAQMAAKL ERLREKDKHI EEVRKNKESK DPADETEAD |
| Tags | His tag N-Terminus |
| Additional sequence information | This protein contains a thrombin cleavage site. |

Specifications

Our **Abpromise guarantee** covers the use of **ab87492** in the following tested applications.

The application notes include recommended starting dilutions; optimal dilutions/concentrations should be determined by the end user.

| | |
|---------------------|--------------------------|
| Applications | SDS-PAGE Western blot |
| Form | Liquid |

Preparation and Storage

| | |
|------------------------------|--|
| Stability and Storage | Shipped at 4°C. Upon delivery aliquot and store at -20°C or -80°C. Avoid repeated freeze / thaw cycles. pH: 8.00 Constituents: 0.316% Tris HCl, 10% Glycerol (glycerin, glycerine) |
|------------------------------|--|

General Info

Function

Involved in the regulation of the microtubule (MT) filament system by destabilizing microtubules. Prevents assembly and promotes disassembly of microtubules. Phosphorylation at Ser-16 may be required for axon formation during neurogenesis. Involved in the control of the learned and innate fear.

Tissue specificity

Ubiquitous. Expression is strongest in fetal and adult brain, spinal cord, and cerebellum, followed by thymus, bone marrow, testis, and fetal liver. Expression is intermediate in colon, ovary, placenta, uterus, and trachea, and is readily detected at substantially lower levels in all other tissues examined. Lowest expression is found in adult liver. Present in much greater abundance in cells from patients with acute leukemia of different subtypes than in normal peripheral blood lymphocytes, non-leukemic proliferating lymphoid cells, bone marrow cells, or cells from patients with chronic lymphoid or myeloid leukemia.

Sequence similarities

Belongs to the stathmin family.
Contains 1 SLD (stathmin-like) domain.

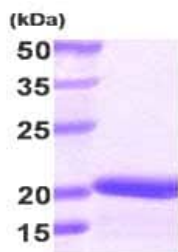
Post-translational modifications

Many different phosphorylated forms are observed depending on specific combinations among the sites which can be phosphorylated. MAPK is responsible for the phosphorylation of stathmin in response to NGF. Phosphorylation at Ser-16 seems to be required for neuron polarization (By similarity). Phosphorylation at Ser-63 reduces tubulin binding 10-fold and suppresses the MT polymerization inhibition activity.

Cellular localization

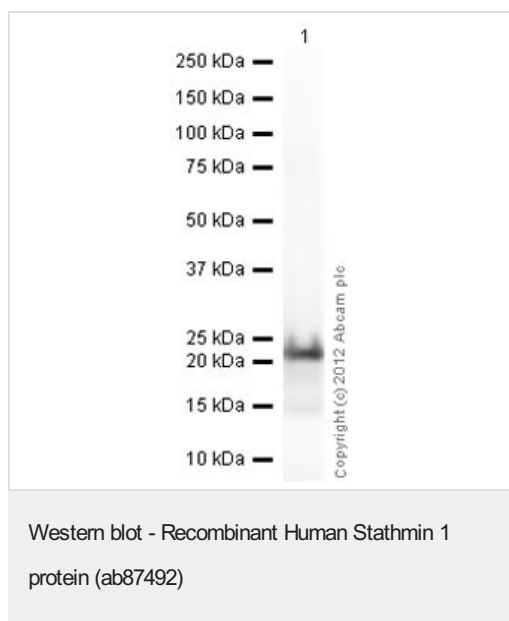
Cytoplasm > cytoskeleton.

Images



15% SDS-PAGE analysis of 3µg ab87492.

SDS-PAGE - Recombinant Human Stathmin 1
protein (ab87492)



Anti-Stathmin 1 antibody (**ab24445**) at 1 µg/ml + Recombinant Human Stathmin 1 protein (ab87492) at 0.01 µg

Secondary

Goat Anti-Rabbit IgG H&L (HRP) preadsorbed (**ab97080**) at 1/5000 dilution

Developed using the ECL technique.

Performed under reducing conditions.

Exposure time: 30 seconds

Please note: All products are "FOR RESEARCH USE ONLY. NOT FOR USE IN DIAGNOSTIC PROCEDURES"

Our Abpromise to you: Quality guaranteed and expert technical support

- Replacement or refund for products not performing as stated on the datasheet
- Valid for 12 months from date of delivery
- Response to your inquiry within 24 hours
- We provide support in Chinese, English, French, German, Japanese and Spanish
- Extensive multi-media technical resources to help you
- We investigate all quality concerns to ensure our products perform to the highest standards

If the product does not perform as described on this datasheet, we will offer a refund or replacement. For full details of the Abpromise, please visit <https://www.abcam.com/abpromise> or contact our technical team.

Terms and conditions

- Guarantee only valid for products bought direct from Abcam or one of our authorized distributors