

Product datasheet

Recombinant Human STEAP4 protein (denatured) ab177658

[1 Image](#)

Description

Product name	Recombinant Human STEAP4 protein (denatured)
Purity	> 90 % SDS-PAGE.
Expression system	Escherichia coli
Accession	<u>Q687X5</u>
Protein length	Protein fragment
Animal free	No
Nature	Recombinant
Species	Human
Sequence	MRGSHHHHHH GMASMTGGQQ MGRDLYDDDD KDRWGSMEKT CIDALPLTMN SSEKQETVCI FGTGDFGRSL GLKMLQCGYS VVFGRNPQKTLLPSGAEV LSYSEAAKKS GIIIIAHRE HYDFLTELTE VLNGKILVDI SNNLKINQYP ESNAEYLAHL VPGAHVVKAF NTISAWALQS GALDASRQ
Predicted molecular weight	21 kDa including tags
Amino acids	1 to 152
Tags	His-DDDDK tag N-Terminus
Additional sequence information	NP_078912

Specifications

Our **Abpromise guarantee** covers the use of **ab177658** in the following tested applications.

The application notes include recommended starting dilutions; optimal dilutions/concentrations should be determined by the end user.

Applications SDS-PAGE

Form Liquid

Preparation and Storage

Stability and Storage

Shipped at 4°C. Store at +4°C short term (1-2 weeks). Upon delivery aliquot. Store at -20°C or -80°C. Avoid freeze / thaw cycle.

pH: 8.00

Constituents: 0.32% Tris HCl, 2.4% Urea, 10% Glycerol (glycerin, glycerine)

General Info

Function

Metalloreductase that has the ability to reduce both Fe(3+) to Fe(2+) and Cu(2+) to Cu(1+). Uses NAD(+) as acceptor. Play a role in systemic metabolic homeostasis, integrating inflammatory and metabolic responses (By similarity). Associated with obesity and insulin-resistance. Involved in inflammatory arthritis, through the regulation of inflammatory cytokines. Inhibits anchorage-independent cell proliferation.

Tissue specificity

Ubiquitous. Highly expressed in adipose tissue. Expressed in placenta, lung, heart and prostate. Detected at lower levels in liver, skeletal muscle, pancreas, testis and small intestine. Highly expressed in joints of patients with rheumatoid arthritis and localized with CD68 cells, a marker for macrophages.

Sequence similarities

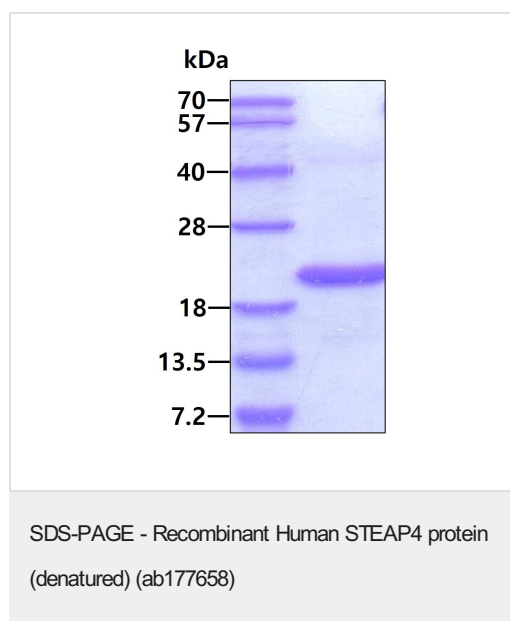
Belongs to the STEAP family.

Contains 1 ferric oxidoreductase domain.

Cellular localization

Cell membrane. Golgi apparatus membrane.

Images



SDS-PAGE of ab177658 (3µg) under reducing condition and visualized by coomassie blue stain.

Please note: All products are "FOR RESEARCH USE ONLY. NOT FOR USE IN DIAGNOSTIC PROCEDURES"

Our Promise to you: Quality guaranteed and expert technical support

- Replacement or refund for products not performing as stated on the datasheet
- Valid for 12 months from date of delivery

- Response to your inquiry within 24 hours
- We provide support in Chinese, English, French, German, Japanese and Spanish
- Extensive multi-media technical resources to help you
- We investigate all quality concerns to ensure our products perform to the highest standards

If the product does not perform as described on this datasheet, we will offer a refund or replacement. For full details of the Abpromise, please visit <https://www.abcam.com/abpromise> or contact our technical team.

Terms and conditions

- Guarantee only valid for products bought direct from Abcam or one of our authorized distributors