

Product datasheet

Recombinant human STK23 protein ab84801

[5 Images](#)

Description

Product name	Recombinant human STK23 protein
Biological activity	The Specific activity of ab84801 was determined to be 235 nmol/min/mg.
Purity	> 80 % Densitometry. Affinity purified.
Expression system	Baculovirus infected Sf9 cells
Protein length	Full length protein
Animal free	No
Nature	Recombinant
Species	Human

Specifications

Our **Abpromise guarantee** covers the use of **ab84801** in the following tested applications.

The application notes include recommended starting dilutions; optimal dilutions/concentrations should be determined by the end user.

Applications	SDS-PAGE Western blot Functional Studies
Form	Liquid
Additional notes	ab204875 (PKC epsilon peptide) can be utilized as a substrate for assessing kinase activity

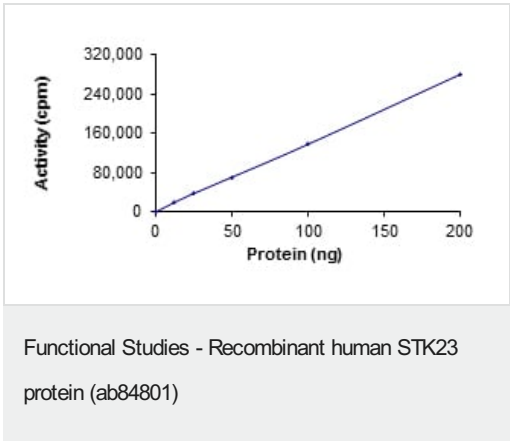
Preparation and Storage

Stability and Storage	Shipped on dry ice. Upon delivery aliquot and store at -80°C. Avoid freeze / thaw cycles. pH: 7.50 Constituents: 0.0038% EGTA, 0.00174% PMSF, 0.00385% DTT, 0.79% Tris HCl, 0.00292% EDTA, 25% Glycerol (glycerin, glycerine), 0.87% Sodium chloride This product is an active protein and may elicit a biological response in vivo, handle with caution.
------------------------------	--

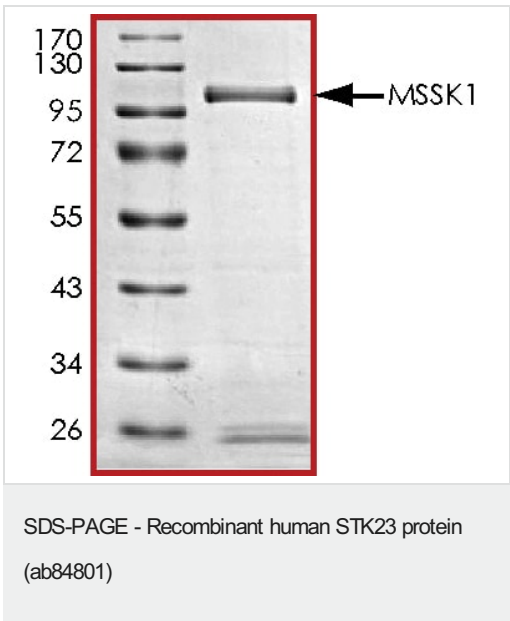
General Info

Function	Serine/arginine-rich protein-specific kinase which specifically phosphorylates its substrates at serine residues located in regions rich in arginine/serine dipeptides, known as RS domains. Phosphorylates the SR splicing factor SRSF1 and the lamin-B receptor (LBR) in vitro. Required for normal muscle development.
Tissue specificity	Exclusively expressed in skeletal and heart muscle.
Sequence similarities	Belongs to the protein kinase superfamily. CMGC Ser/Thr protein kinase family. Contains 1 protein kinase domain.

Images



The specific activity of STK23 (ab84801) was determined to be 210 nmol/min/mg as per activity assay protocol



SDS PAGE analysis of ab84801



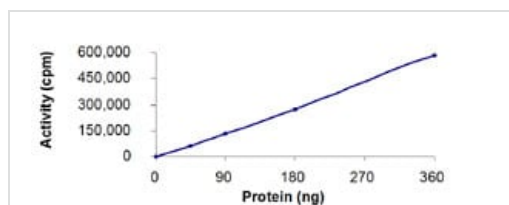
SDS PAGE analysis of ab84801

SDS-PAGE - Recombinant human STK23 protein
(ab84801)



SDS-PAGE showing ab84801 at approximately 98kDa.

SDS-PAGE - Recombinant human STK23 protein
(ab84801)



The Specific activity of ab84801 was determined to be 235 nmol/min/mg.

Functional Studies - Recombinant human STK23 protein (ab84801)

Please note: All products are "FOR RESEARCH USE ONLY. NOT FOR USE IN DIAGNOSTIC PROCEDURES"

Our Abpromise to you: Quality guaranteed and expert technical support

- Replacement or refund for products not performing as stated on the datasheet
- Valid for 12 months from date of delivery
- Response to your inquiry within 24 hours

- We provide support in Chinese, English, French, German, Japanese and Spanish
- Extensive multi-media technical resources to help you
- We investigate all quality concerns to ensure our products perform to the highest standards

If the product does not perform as described on this datasheet, we will offer a refund or replacement. For full details of the Abpromise, please visit <https://www.abcam.com/abpromise> or contact our technical team.

Terms and conditions

- Guarantee only valid for products bought direct from Abcam or one of our authorized distributors