

### Recombinant Human Surf1 protein ab95380

1 Image

#### Description

<b>Product name</b>	Recombinant Human Surf1 protein
<b>Purity</b>	> 95 % SDS-PAGE. purified by using conventional chromatography techniques
<b>Expression system</b>	Escherichia coli
<b>Protein length</b>	Protein fragment
<b>Animal free</b>	No
<b>Nature</b>	Recombinant
<b>Species</b>	Human
<b>Sequence</b>	MGSSHHHHHH SSGLVPRGSH MQVQRRKWKL NLAELESRV LAEPVPLPAD PMELKNLEYR PVKVRGCFDH SKELYMMPRT MVDPVREARE GGLISSSTQS GAYVVTPFHC TDLGVTILVN RGFVPRKKVN PETRQKGQIE GEVDLIGMVR LTETRQPFVP ENNPERNHWH YRDLEAMARI TGAEPFIDA NFQSTVPGGP IGGQTRVTLR NEHLQ
<b>Amino acids</b>	80 to 273

#### Specifications

Our **Abpromise guarantee** covers the use of **ab95380** in the following tested applications.

The application notes include recommended starting dilutions; optimal dilutions/concentrations should be determined by the end user.

<b>Applications</b>	SDS-PAGE
<b>Form</b>	Liquid

#### Preparation and Storage

<b>Stability and Storage</b>	Shipped at 4°C. Store at +4°C short term (1-2 weeks). Upon delivery aliquot. Store at -20°C or -80°C. Avoid freeze / thaw cycle.  pH: 8.00 Constituents: 0.0154% DTT, 0.316% Tris HCl, 10% Glycerol (glycerin, glycerine), 0.58% Sodium chloride
------------------------------	---

## General Info

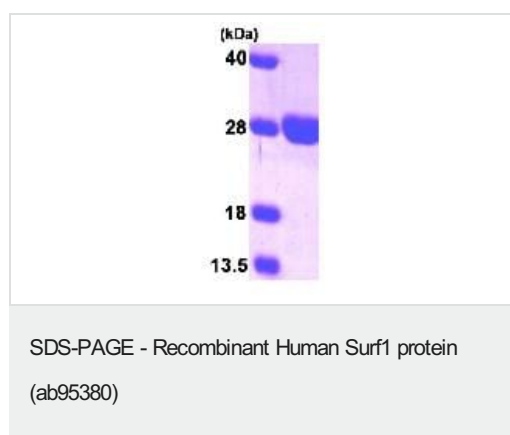
---

<b>Function</b>	Probably involved in the biogenesis of the COX complex.
<b>Involvement in disease</b>	Defects in SURF1 are a cause of Leigh syndrome (LS) [MIM:256000]. LS is a severe neurological disorder characterized by bilaterally symmetrical necrotic lesions in subcortical brain regions that is commonly associated with systemic cytochrome c oxidase (COX) deficiency.
<b>Sequence similarities</b>	Belongs to the SURF1 family.
<b>Cellular localization</b>	Mitochondrion inner membrane.

---

## Images

---



15% SDS\_PAGE image (3ug) generated using ab95380.

**Please note:** All products are "FOR RESEARCH USE ONLY. NOT FOR USE IN DIAGNOSTIC PROCEDURES"

## Our Abpromise to you: Quality guaranteed and expert technical support

---

- Replacement or refund for products not performing as stated on the datasheet
- Valid for 12 months from date of delivery
- Response to your inquiry within 24 hours
- We provide support in Chinese, English, French, German, Japanese and Spanish
- Extensive multi-media technical resources to help you
- We investigate all quality concerns to ensure our products perform to the highest standards

If the product does not perform as described on this datasheet, we will offer a refund or replacement. For full details of the Abpromise, please visit <https://www.abcam.com/abpromise> or contact our technical team.

## Terms and conditions

---

- Guarantee only valid for products bought direct from Abcam or one of our authorized distributors