

Product datasheet

Recombinant Human TBR2 / Eomes protein ab152851

[1 Image](#)

Description

Product name	Recombinant Human TBR2 / Eomes protein
Expression system	Wheat germ
Accession	<u>O95936</u>
Protein length	Protein fragment
Animal free	No
Nature	Recombinant
Species	Human
Sequence	PYGIKSLPLQTSHALGYPDPTFPAMAGWGGRGSYQRKM AAGLPWTSRTS PTVFSEDQLSKEKVKEEIGSSWIETPPSIKSLDSNDSGVYT SACKRRRL
Predicted molecular weight	37 kDa including tags
Amino acids	547 to 645

Specifications

Our **Abpromise guarantee** covers the use of **ab152851** in the following tested applications.

The application notes include recommended starting dilutions; optimal dilutions/concentrations should be determined by the end user.

Applications	Western blot ELISA SDS-PAGE
Form	Liquid
Additional notes	

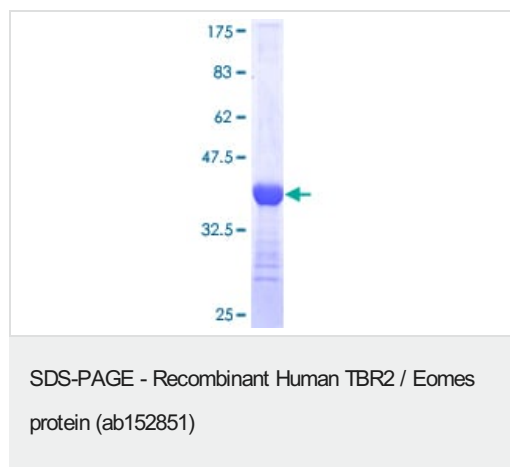
Preparation and Storage

Stability and Storage	Shipped on dry ice. Upon delivery aliquot and store at -80°C. Avoid freeze / thaw cycles. pH: 8.00 Constituents: 0.31% Glutathione, 0.79% Tris HCl
------------------------------	--

General Info

Function	Functions as a transcriptional activator playing a crucial role during development. Functions in trophoblast differentiation and later in gastrulation, regulating both mesoderm delamination and endoderm specification. Plays a role in brain development being required for the specification and the proliferation of the intermediate progenitor cells and their progeny in the cerebral cortex. Also involved in the differentiation of CD8+ T-cells during immune response regulating the expression of lytic effector genes.
Tissue specificity	Expressed in CD8+ T-cells.
Involvement in disease	Note=A translocation t(3;10)(p24;q23) located 215 kb 3' to the EOMES gene but leading to loss of its expression was identified in a large consanguineous family. Homozygous silencing produces microcephaly associated with corpus callosum agenesis, bilateral polymicrogyria, ventricular dilatation and a small cerebellum.
Sequence similarities	Contains 1 T-box DNA-binding domain.
Developmental stage	Detected at 7 weeks of development in the forebrain floorplate of the CNS. Expressed within the mantle layer and migrating neuroblasts of the telencephalon at 12.5 weeks of development.
Cellular localization	Nucleus.

Images



12.5% SDS-PAGE analysis of ab152851 stained with Coomassie Blue.

Please note: All products are "FOR RESEARCH USE ONLY. NOT FOR USE IN DIAGNOSTIC PROCEDURES"

Our Abpromise to you: Quality guaranteed and expert technical support

- Replacement or refund for products not performing as stated on the datasheet
- Valid for 12 months from date of delivery
- Response to your inquiry within 24 hours
- We provide support in Chinese, English, French, German, Japanese and Spanish
- Extensive multi-media technical resources to help you
- We investigate all quality concerns to ensure our products perform to the highest standards

If the product does not perform as described on this datasheet, we will offer a refund or replacement. For full details of the Abpromise, please visit <https://www.abcam.com/abpromise> or contact our technical team.

Terms and conditions

- Guarantee only valid for products bought direct from Abcam or one of our authorized distributors