

Recombinant human TESK2 protein ab140418

4 Images

Description	
Product name	Recombinant human TESK2 protein
Biological activity	The specific activity of ab140418 was determined to be 3.5 nmol/min/mg.
Purity	> 80 % Densitometry. Affinity purified.
Expression system	Baculovirus infected Sf9 cells
Accession	<u>Q96S53</u>
Protein length	Full length protein
Animal free	No
Nature	Recombinant
Species	Human
Sequence	MDRSKRNSIAGFPPrVERLEEFEGGGGGEGNVSQVGRV WPSSYRALISAF SRLTRLDDFTCEKIGSGFFSEVFKVRHRASGQVMALKMN TLSSNRANMLK EVQLMNRLSHPNILRFMGVCVHQGQLHALTEYINSGNLEQ LLDSNLHLPW TVRVKLAYDIAVGLSYLHFKGIFHRDLTSKNCLIKRDENGYS AVVADFGL AEKIPDVSMGSEKLAVVGSPFWMAPEVLRDEPYNEKAD VFSYGIIICEII ARIQADPDYLPRTENFGLDYDAFQHMVGDCPPDFLQLTF NCCNMDPKLRP SFVEIGKTL EEILSRLQEEEQERDRKLQPTARGLLEKAPGV KRLSSLDDK IPHKSPCPRRTWLSRSQSDIFSRKPPRTVSVLDPYYRPRD GAARTPKVN PFSARQDLMGGKIKFFDLPSKSVISLVFDLDAPGPGTMPL ADWQEPLAPP IRRWRSLPGSPEFLHQEACPFVGREESLSDGPPPRLSSL KYRVKEIPPFR ASALPAAQAHEAMDCSILQEENGFGSRPQGTSPCPAGA SEEMEVEERPAG STPATFSTSGIGLQTQGKQDG
Predicted molecular weight	92 kDa including tags

## Specifications

---

Our **Abpromise guarantee** covers the use of **ab140418** in the following tested applications.

The application notes include recommended starting dilutions; optimal dilutions/concentrations should be determined by the end user.

<b>Applications</b>	Western blot
	Functional Studies
	SDS-PAGE
<b>Form</b>	Liquid
<b>Additional notes</b>	<b>ab85154</b> (Human Cofilin full length protein) can be utilized as a substrate for assessing Kinase activity

## Preparation and Storage

---

<b>Stability and Storage</b>	Shipped on dry ice. Upon delivery aliquot and store at -80°C. Avoid freeze / thaw cycles.
	pH: 7.50
	Constituents: 0.31% Glutathione, 0.002% PMSF, 0.004% DTT, 0.79% Tris HCl, 0.003% EDTA, 25% Glycerol (glycerin, glycerine), 0.88% Sodium chloride
	This product is an active protein and may elicit a biological response in vivo, handle with caution.

## General Info

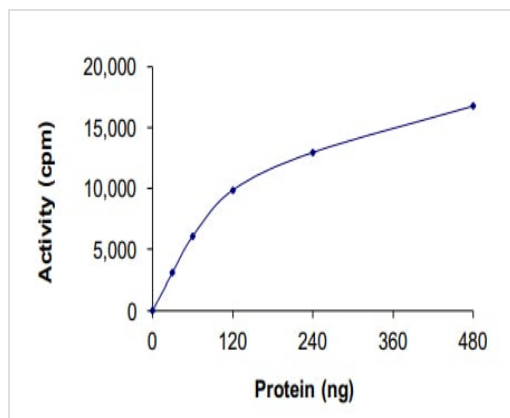
---

<b>Function</b>	Dual specificity protein kinase activity catalyzing autophosphorylation and phosphorylation of exogenous substrates on both serine/threonine and tyrosine residues. Phosphorylates cofilin at 'Ser-3'. May play an important role in spermatogenesis.
<b>Tissue specificity</b>	Predominantly expressed in testis and prostate. Found predominantly in non-germinal Sertoli cells.
<b>Sequence similarities</b>	Belongs to the protein kinase superfamily. TKL Ser/Thr protein kinase family. Contains 1 protein kinase domain.
<b>Cellular localization</b>	Nucleus.

---

## Images

---



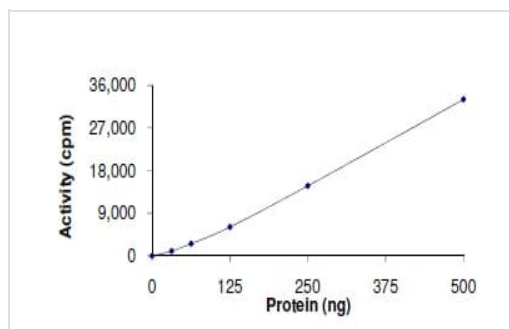
The specific activity of TESK2 (ab140418) was determined to be 4 nmol/min/mg as per activity assay protocol

Functional Studies - Recombinant human TESK2 protein (ab140418)



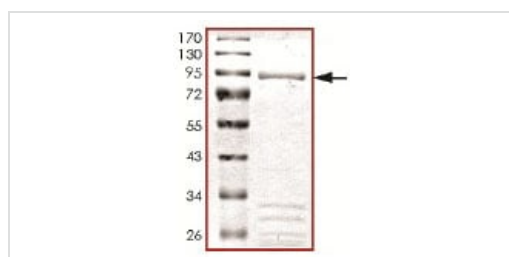
SDS PAGE analysis of ab140418

SDS-PAGE - Recombinant human TESK2 protein (ab140418)



Kinase Activity Plot. The specific activity of ab140418 was determined to be 3.5 nmol/min/mg.

Functional Studies - Recombinant human TESK2 protein (ab140418)



SDS-PAGE analysis of ab140418.

SDS-PAGE - Recombinant human TESK2 protein (ab140418)

**Please note:** All products are "FOR RESEARCH USE ONLY. NOT FOR USE IN DIAGNOSTIC PROCEDURES"

### Our Abpromise to you: Quality guaranteed and expert technical support

- Replacement or refund for products not performing as stated on the datasheet
- Valid for 12 months from date of delivery
- Response to your inquiry within 24 hours
- We provide support in Chinese, English, French, German, Japanese and Spanish
- Extensive multi-media technical resources to help you
- We investigate all quality concerns to ensure our products perform to the highest standards

If the product does not perform as described on this datasheet, we will offer a refund or replacement. For full details of the Abpromise, please visit <https://www.abcam.com/abpromise> or contact our technical team.

### Terms and conditions

- Guarantee only valid for products bought direct from Abcam or one of our authorized distributors