

Recombinant Human TLR8 protein ab153344

1 Image

Description	
Product name	Recombinant Human TLR8 protein
Expression system	Wheat germ
Protein length	Full length protein
Animal free	No
Nature	Recombinant
Species	Human
Sequence	<div>MENMFLQSSMLTCIFLLISGSCELCAEENFSRSYPCDEKK QNDSVIAECS NRRLQEVPTVGKYVTELDLSDNFITHITNESFQGLQNLTKI NLNHNPNV QHQNGNPGIQSNGLNITDGAFLNLKNLRELLLEDNQLPQIP SGLPESLTE LSLIQNNIYNITKEGISRLINLKNLYLAWNCYFNKVCEKTNIED GVFETL TNLELLSLSFNSLSHVPPKLPSSLRKLFLSNTQIKYISEEDF KGLINLTL LDLSGNCPRCFNAPFPCVPCDGGASINIDRFAFQNLTLRL YLNLSSTSLR KINAAWFKNMPHLKVLDLEFNLYVGEIASGAFTMLPRLEI LDLSFNYIK GSYPQHINISRNFSKLLSLRALHLRGYVFQELREDDFQPLM QLPNLSTIN LGINFIKQIDFKLFQNFSNLEIIMYSENRIPLVKDTRQSYANS SSFQRH IRKRRSTDFEFDPHSNFYHFTRPLIKQCAAAYGKALDLSLN SIFFIGPNQ FENLPDIACLNLSANSNAQVLSGTEFSAIPHVKYLDLTNNR LDFDNASAL TELSDLEVLDLSYNSHYFRIAGVTHHLEFIQNFTNLKVLNLS HNNIYTLT DKYNLESKSLVELVFSGNRDLWNNDDNRYISIFKGLKNL TRLDLSLNR LKHIPNEAFLNLPASLTEFHINDNMLKFFNWTLTQQFPRLE LLDLRGNKL LFLTDSLSDFTSSLRTLLLSHNRISHLPSGFLSEVSSLKHL</div>

DLSSNLLKT
INKSALETKTTTKLSMLELHGPNPFECTCDIGDFRRWMDEH
LNVKIPRLVD
VICASPGDQRGKSIVSLELTTCVSDVTAVILFFFTFFITTMV
MLAALAHH
LFYWDVWFMYNVCIAKVKGYRSLSTSQTIFYDAYISYDTKDA
SVTDWVINE
LRYHLEESRDKNVLLCLEERDWDPLAIIIDNLMQSIQSKK
TVFVLTKKY
AKSWNFKTAFYLALQRLMDENMDVIIFILLEPVLQHSQYLR
LRQRICKSS
ILQWPDNPKEGLFWQTLRNVLTENDSRYNMYVDSIKQ
Y

Amino acids	1 to 1041
Tags	GST tag N-Terminus

Specifications

Our **Abpromise guarantee** covers the use of **ab153344** in the following tested applications.

The application notes include recommended starting dilutions; optimal dilutions/concentrations should be determined by the end user.

Applications	ELISA Western blot
--------------	-----------------------

Form	Liquid
------	--------

Additional notes

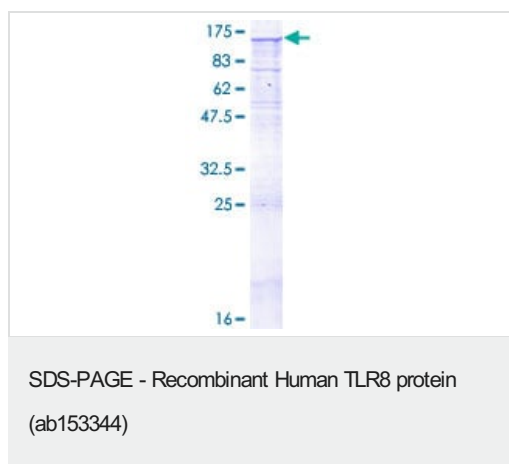
Preparation and Storage

Stability and Storage	Shipped on dry ice. Upon delivery aliquot and store at -80°C. Avoid freeze / thaw cycles. pH: 8.00 Constituents: 0.31% Glutathione, 0.79% Tris HCl
-----------------------	--

General Info

Function	Key component of innate and adaptive immunity. TLRs (Toll-like receptors) control host immune response against pathogens through recognition of molecular patterns specific of microorganisms. Acts via MYD88 and TRAF6, leading to NF-kappa-B activation, cytokine secretion and the inflammatory response.
Tissue specificity	Detected in brain, heart, lung, liver, placenta, in monocytes, and at lower levels in CD11c+ immature dendritic cells.
Sequence similarities	Belongs to the Toll-like receptor family. Contains 23 LRR (leucine-rich) repeats. Contains 1 LRRCT domain. Contains 1 TIR domain.
Cellular localization	Membrane.

Images



ab153344 on a 12.5% SDS-PAGE stained with Coomassie Blue.

Please note: All products are "FOR RESEARCH USE ONLY. NOT FOR USE IN DIAGNOSTIC PROCEDURES"

Our Abpromise to you: Quality guaranteed and expert technical support

- Replacement or refund for products not performing as stated on the datasheet
- Valid for 12 months from date of delivery
- Response to your inquiry within 24 hours
- We provide support in Chinese, English, French, German, Japanese and Spanish
- Extensive multi-media technical resources to help you
- We investigate all quality concerns to ensure our products perform to the highest standards

If the product does not perform as described on this datasheet, we will offer a refund or replacement. For full details of the Abpromise, please visit <https://www.abcam.com/abpromise> or contact our technical team.

Terms and conditions

- Guarantee only valid for products bought direct from Abcam or one of our authorized distributors