

Product datasheet

Recombinant Human TOM1 protein ab160775

[1 Image](#)

Description

Product name	Recombinant Human TOM1 protein
Expression system	Wheat germ
Accession	<u>O60784</u>
Protein length	Full length protein
Animal free	No
Nature	Recombinant
Species	Human
Sequence	MDFLLGNPFSSPVGQRIEKATDGSLQSEDWALNMEICDIIN ETEEGPKDA LRVKKRIVGNKNFHEVMLALTVLETCVKNCGHRFHVLVA SQDFVESVLV RTILPKNNPPTIVHDKVLNLIQSWADAFRSSPDLTGVVITYE DLRRKGLE FPMTDLDMLSPIHTPQRTVFNSETQSGQDSVGTDSSQQE DSGQHAAPLPA PPILSGDTPIAPTPEQIGKLRSELEMVSGNVRVMSEMLTEL VPTQAEPAD LELLQELNRTC RAMQQRVLELIPQIANEQLTEELLVNDNLN NVFLRHER FERFRTGQTTKAPSEAEPAADLIDMGPDPAATGNLSSQL AGMNLGSSSVR AGLQSLEASGRLEDEFDMFALTRGSSLADQRKEVKYEAP QATDGLAGALD ARQQSTGAIPVTQA CLMEDIEQWLSTDVGNDAEEP KGV T SEGKFDK FLEE RAKAADRLPNLSSPSAEGPPGPPSGPAPRKKKTQE KDDD MLFAL
Amino acids	1 to 493
Tags	GST tag N-Terminus

Specifications

Our **Abpromise guarantee** covers the use of **ab160775** in the following tested applications.

The application notes include recommended starting dilutions; optimal dilutions/concentrations should be determined by the end user.

Applications	Western blot ELISA
Form	Liquid
Additional notes	

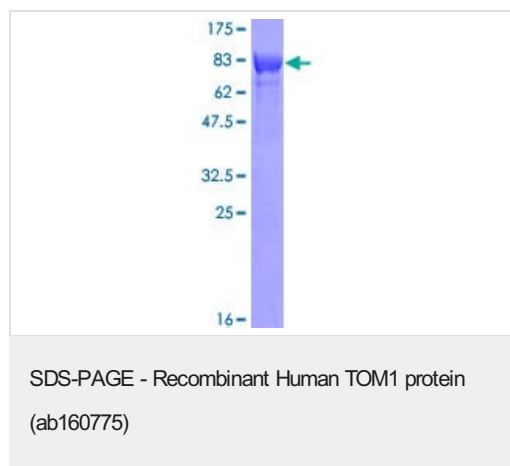
Preparation and Storage

Stability and Storage	Shipped on dry ice. Upon delivery aliquot and store at -80°C. Avoid freeze / thaw cycles. pH: 8.00 Constituents: 0.31% Glutathione, 0.79% Tris HCl
------------------------------	--

General Info

Relevance	Function: May be involved in intracellular trafficking. Probable association with membranes. Tissue specificity: Widely expressed. Highly expressed in skeletal muscle, heart, placenta and liver. Similarity: Belongs to the TOM1 family. Contains 1 GAT domain. Contains 1 VHS domain.
Cellular localization	Cytoplasm. Membrane; Peripheral membrane protein

Images



ab160775 on a 12.5% SDS-PAGE stained with Coomassie Blue.

Please note: All products are "FOR RESEARCH USE ONLY. NOT FOR USE IN DIAGNOSTIC PROCEDURES"

Our Abpromise to you: Quality guaranteed and expert technical support

- Replacement or refund for products not performing as stated on the datasheet
- Valid for 12 months from date of delivery
- Response to your inquiry within 24 hours
- We provide support in Chinese, English, French, German, Japanese and Spanish

- Extensive multi-media technical resources to help you
- We investigate all quality concerns to ensure our products perform to the highest standards

If the product does not perform as described on this datasheet, we will offer a refund or replacement. For full details of the Abpromise, please visit <https://www.abcam.com/abpromise> or contact our technical team.

Terms and conditions

- Guarantee only valid for products bought direct from Abcam or one of our authorized distributors