

## Product datasheet

# Recombinant Human TRAP/CD40L protein (His tag) ab216257

[1 Image](#)

### Description

---

<b>Product name</b>	Recombinant Human TRAP/CD40L protein (His tag)
<b>Purity</b>	> 90 % SDS-PAGE.
<b>Endotoxin level</b>	< 1.000 Eu/μg
<b>Expression system</b>	HEK 293 cells
<b>Accession</b>	<b><u>P29965</u></b>
<b>Protein length</b>	Protein fragment
<b>Animal free</b>	No
<b>Nature</b>	Recombinant
<b>Species</b>	Human
<b>Sequence</b>	GDQNPQIAAHVISEASSKTTSVLQWAEKGYTMSNNLVTL ENKQLTVKR QGLYYIAQVTFCSNREASSQAPFIASLCLKSPGRFERILLR AANTHSSA KPCGQQSIHLGGVFELQPGASVFNVTDP SQVSHGTGFT SFGLLKL
<b>Predicted molecular weight</b>	18 kDa including tags
<b>Amino acids</b>	116 to 261
<b>Tags</b>	His tag N-Terminus
<b>Additional sequence information</b>	NM_000074.

### Specifications

---

Our **Abpromise guarantee** covers the use of **ab216257** in the following tested applications.

The application notes include recommended starting dilutions; optimal dilutions/concentrations should be determined by the end user.

**Applications** SDS-PAGE

**Form** Liquid

### Preparation and Storage

---

## Stability and Storage

Shipped at 4°C. Upon delivery aliquot. Store at -80°C. Avoid freeze / thaw cycle.

pH: 8.00

Constituents: 0.64% Sodium chloride, 20% Glycerol (glycerin, glycerine), 0.02% Potassium chloride, 0.63% Tris HCl

## General Info

---

### Function

Mediates B-cell proliferation in the absence of co-stimulus as well as IgE production in the presence of IL-4. Involved in immunoglobulin class switching.

Release of soluble CD40L from platelets is partially regulated by GP IIb/IIIa, actin polymerization, and an matrix metalloproteinases (MMP) inhibitor-sensitive pathway.

### Tissue specificity

Specifically expressed on activated CD4+ T-lymphocytes.

### Involvement in disease

Defects in CD40LG are the cause of X-linked immunodeficiency with hyper-IgM type 1 (HIGM1) [MIM:308230]; also known as X-linked hyper IgM syndrome (XHIM). HIGM1 is an immunoglobulin isotype switch defect characterized by elevated concentrations of serum IgM and decreased amounts of all other isotypes. Affected males present at an early age (usually within the first year of life) recurrent bacterial and opportunistic infections, including Pneumocystis carinii pneumonia and intractable diarrhea due to cryptosporidium infection. Despite substitution treatment with intravenous immunoglobulin, the overall prognosis is rather poor, with a death rate of about 10% before adolescence.

### Sequence similarities

Belongs to the tumor necrosis factor family.

### Post-translational modifications

The soluble form derives from the membrane form by proteolytic processing.

N-linked glycan is a mixture of high mannose and complex type. Glycan structure does not influence binding affinity to CD40.

Not O-glycosylated.

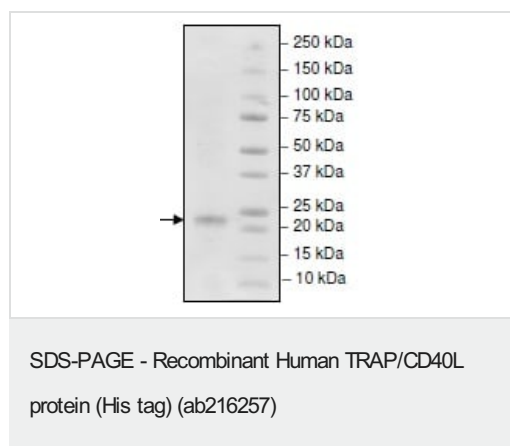
### Cellular localization

Secreted and Cell membrane.

---

## Images

---



4-20% SDS-PAGE analysis of 3 µg ab216257.

**Please note:** All products are "FOR RESEARCH USE ONLY. NOT FOR USE IN DIAGNOSTIC PROCEDURES"

**Our Promise to you: Quality guaranteed and expert technical support**

---

- Replacement or refund for products not performing as stated on the datasheet
- Valid for 12 months from date of delivery
- Response to your inquiry within 24 hours
  
- We provide support in Chinese, English, French, German, Japanese and Spanish
- Extensive multi-media technical resources to help you
- We investigate all quality concerns to ensure our products perform to the highest standards

If the product does not perform as described on this datasheet, we will offer a refund or replacement. For full details of the Abpromise, please visit <https://www.abcam.com/abpromise> or contact our technical team.

### **Terms and conditions**

---

- Guarantee only valid for products bought direct from Abcam or one of our authorized distributors