

# Recombinant human TTK/Mps1 protein ab89589

6 Images

### Description

<b>Product name</b>	Recombinant human TTK/Mps1 protein
<b>Biological activity</b>	The Specific activity of ab89589 was determined to be 19 nmol/min/mg.
<b>Purity</b>	> 75 % Densitometry. Affinity purified.
<b>Expression system</b>	Baculovirus infected Sf9 cells
<b>Protein length</b>	Full length protein
<b>Animal free</b>	No
<b>Nature</b>	Recombinant
<b>Species</b>	Human
<b>Tags</b>	GST tag N-Terminus

### Specifications

Our **Abpromise guarantee** covers the use of **ab89589** in the following tested applications.

The application notes include recommended starting dilutions; optimal dilutions/concentrations should be determined by the end user.

<b>Applications</b>	SDS-PAGE Western blot Functional Studies
<b>Form</b>	Liquid
<b>Additional notes</b>	<b>ab64311</b> (Myelin Basic Protein protein) can be utilized as a substrate for assessing kinase activity

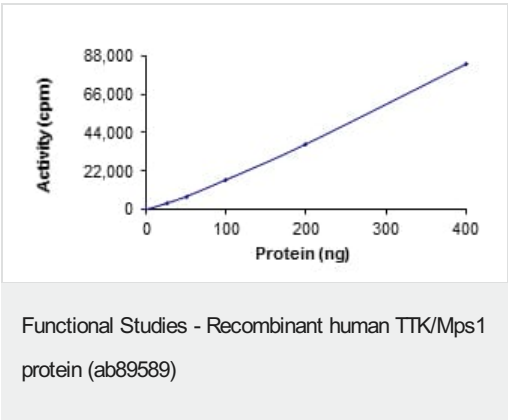
### Preparation and Storage

<b>Stability and Storage</b>	Shipped on dry ice. Upon delivery aliquot and store at -80°C. Avoid freeze / thaw cycles. pH: 7.50 Constituents: 0.0038% EGTA, 0.00174% PMSF, 0.00385% DTT, 0.79% Tris HCl, 0.00292% EDTA, 25% Glycerol (glycerin, glycerine), 0.87% Sodium chloride This product is an active protein and may elicit a biological response in vivo, handle with caution.
------------------------------	--

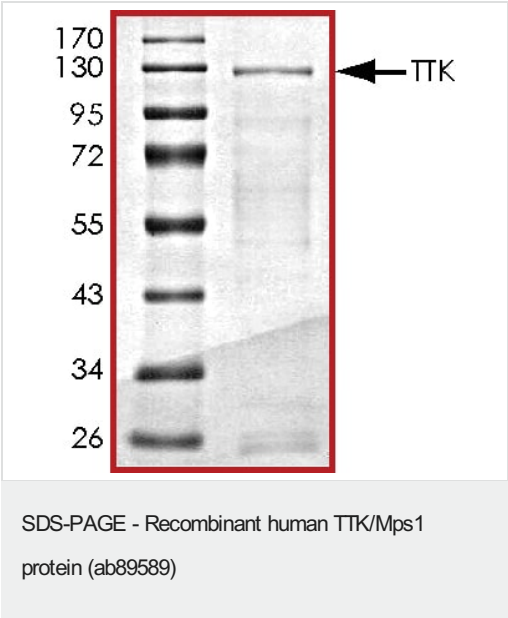
General Info

Function	Phosphorylates proteins on serine, threonine, and tyrosine. Probably associated with cell proliferation. Essential for chromosome alignment by enhancing AURKB activity (via direct CDCA8 phosphorylation) at the centromere, and for the mitotic checkpoint.
Tissue specificity	Present in rapidly proliferating cell lines.
Sequence similarities	Belongs to the protein kinase superfamily. Ser/Thr protein kinase family. Contains 1 protein kinase domain.

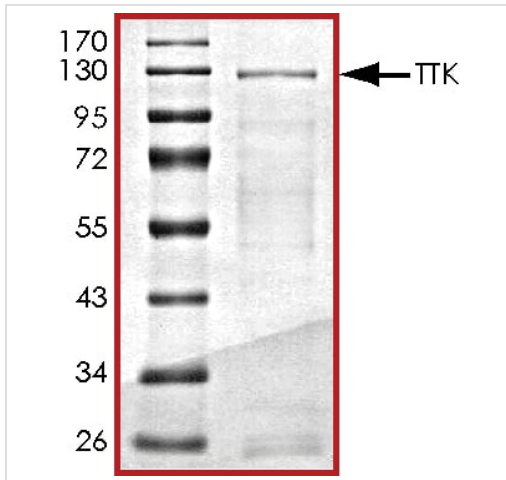
Images



The specific activity of TTK/Mps1 (ab89589) was determined to be 18 nmol/min/mg as per activity assay protocol

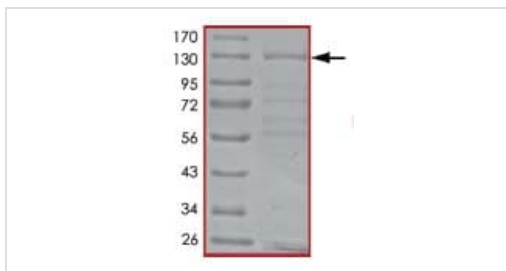


SDS PAGE analysis of ab89589



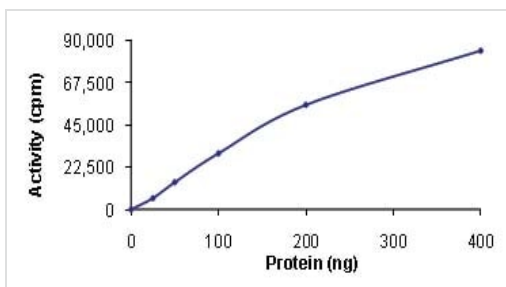
SDS PAGE analysis of ab89589

SDS-PAGE - Recombinant human TTK/Mps1 protein (ab89589)



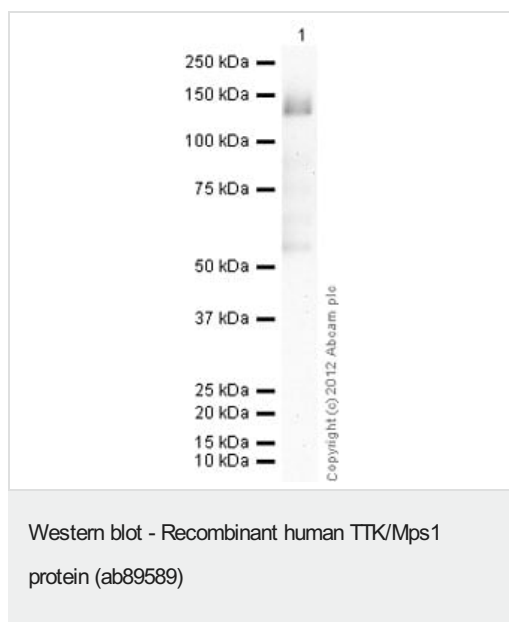
SDS-PAGE showing ab89589 at approximately 130kDa.

SDS-PAGE - Recombinant human TTK/Mps1 protein (ab89589)



Kinase Assay demonstrating specific activity of ab89589.

Functional Studies - Recombinant human TTK/Mps1 protein (ab89589)



Anti-TTK/Mps1 antibody [N1] - BSA free (**ab11108**) at 10 µg/ml +  
Recombinant human TTK/Mps1 protein (ab89589) at 0.01 µg

### Secondary

Goat Anti-Mouse IgG H&L (HRP) preadsorbed (**ab97040**) at  
1/5000 dilution

Developed using the ECL technique.

Performed under reducing conditions.

**Exposure time:** 8 minutes

**ab11108** recognizes the full length tagged recombinant TTK/Mps1 protein (ab89589) which has an expected molecular weight of 130 kDa.

**Please note:** All products are "FOR RESEARCH USE ONLY. NOT FOR USE IN DIAGNOSTIC PROCEDURES"

### Our Abpromise to you: Quality guaranteed and expert technical support

- Replacement or refund for products not performing as stated on the datasheet
- Valid for 12 months from date of delivery
- Response to your inquiry within 24 hours
- We provide support in Chinese, English, French, German, Japanese and Spanish
- Extensive multi-media technical resources to help you
- We investigate all quality concerns to ensure our products perform to the highest standards

If the product does not perform as described on this datasheet, we will offer a refund or replacement. For full details of the Abpromise, please visit <https://www.abcam.com/abpromise> or contact our technical team.

### Terms and conditions

- Guarantee only valid for products bought direct from Abcam or one of our authorized distributors