

Recombinant Human Tubby like protein 4 ab163458

1 Image

Description

Product name	Recombinant Human Tubby like protein 4
Expression system	Wheat germ
Protein length	Full length protein
Animal free	No
Nature	Recombinant
Species	Human
Sequence	MYAAVEHGPVLCSDSNILCLSWKGRVPKSEKEKPVCRRR YEEGWLATGN GRGVVGVFTTSSHCRDRSTPQRINFNLRGHNSEVVLVR WNEPYQKLATC DADGGIFVWIQYEGRWSVELVNDRGAQVSDFTWSHDGT QALISYRDGFVL VGSVSGQRHWSSEINLESQITCGIWTPDDQQVLFGTADG QVIMDCHGRM LAHVLLHESDGVLGMSWNYPIFLVEDSSESDTDSDDYAP PQDGPAAYPIP VQNIKPLLTVSFTSGDISLMNNYDDLSTVIRSGLKEVVAQ WCTQGDLA VAGMERQTQLGELPNGPLLKSAMVKFYNVRGEHIFTDLT VQRPIISICW GHRDSRLLMASGPALYVVRVEHRVSSLQLLCQQAIASTLR EDKDVSKLTL PPRLCSYLSTAFIPTIKPPIDPNNMRDFVSYP SAGNERLH CTMKRTEDD PEVGGPCYTLYLEYLGGLVPILKGRRISKLRPEFVIMDPRTD SKPDEYG NSLISTVIDSCNCSDDSDIELSDDWAACKSPKISRASKSPK LPRISIEAR KSPKLPRAAQELSRSPRLPLRKPSVGSPSLTRREFPFEDI TQHNYLAQVT SNIWGTFKFMGLAAFLPTNLGAVIYKTSLLHLQPRQMTMLP EVRKISM DYINLPVFNPVNFSEDEDDLPGDAVWTD
Amino acids	1 to 678
Tags	GST tag N-Terminus

## Specifications

Our **Abpromise guarantee** covers the use of **ab163458** in the following tested applications.

The application notes include recommended starting dilutions; optimal dilutions/concentrations should be determined by the end user.

<b>Applications</b>	ELISA
	Western blot
<b>Form</b>	Liquid
<b>Additional notes</b>	

## Preparation and Storage

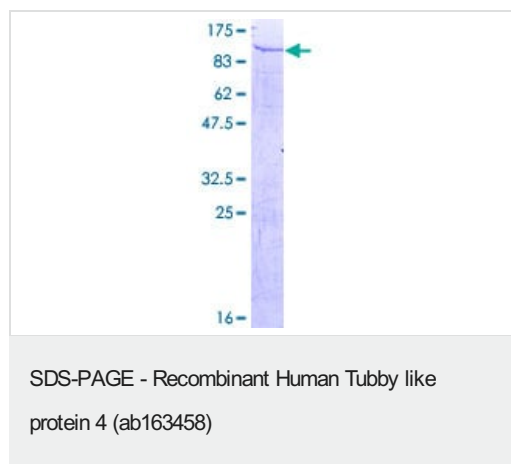
<b>Stability and Storage</b>	Shipped on dry ice. Upon delivery aliquot and store at -80°C. Avoid freeze / thaw cycles.
	pH: 8.00
	Constituents: 0.31% Glutathione, 0.79% Tris HCl

## General Info

<b>Relevance</b>	Tubby like protein 4 is a novel gene belonging to the tubby superfamily proteins (TUSP). The protein sequences of these genes are 40-48% identical to other tubby family proteins at the C-terminal conserved 'tubby domain'. The TUSP proteins also contain a tubby signature motif (FXGRVTQ), two bipartite nuclear localization signals (NLSs) at the C-terminal, one WD40 repeat region, one suppressor of cytokines signaling domain and two proline-rich regions. The precise biological function of the tubby superfamily genes is still unknown. However the highly conserved tubby domain in different species suggests that these proteins must have fundamental biological functions in a wide range of multi-cellular organisms.
------------------	--

<b>Cellular localization</b>	Cytoplasmic
------------------------------	-------------

## Images



ab163458 on a 12.5% SDS-PAGE stained with Coomassie Blue.

**Please note:** All products are "FOR RESEARCH USE ONLY. NOT FOR USE IN DIAGNOSTIC PROCEDURES"

### **Our Abpromise to you: Quality guaranteed and expert technical support**

---

- Replacement or refund for products not performing as stated on the datasheet
- Valid for 12 months from date of delivery
- Response to your inquiry within 24 hours
  
- We provide support in Chinese, English, French, German, Japanese and Spanish
- Extensive multi-media technical resources to help you
- We investigate all quality concerns to ensure our products perform to the highest standards

If the product does not perform as described on this datasheet, we will offer a refund or replacement. For full details of the Abpromise, please visit <https://www.abcam.com/abpromise> or contact our technical team.

### **Terms and conditions**

---

- Guarantee only valid for products bought direct from Abcam or one of our authorized distributors