

Product datasheet

Recombinant Human Ube2N / Ubc13 protein ab95900

1 Image

Description

Product name	Recombinant Human Ube2N / Ubc13 protein
Purity	> 80 % SDS-PAGE.
Expression system	Escherichia coli
Accession	<u>P61088</u>
Protein length	Full length protein
Animal free	No
Nature	Recombinant
Species	Human
Predicted molecular weight	18 kDa including tags
Amino acids	2 to 152
Tags	His tag N-Terminus

Specifications

Our **Abpromise guarantee** covers the use of **ab95900** in the following tested applications.

The application notes include recommended starting dilutions; optimal dilutions/concentrations should be determined by the end user.

Applications SDS-PAGE

Form Liquid

Preparation and Storage

Stability and Storage Shipped on Dry Ice. Store at -80°C.
pH: 8.00
Constituents: 0.0462% (R*,R*)-1,4-Dimercaptobutan-2,3-diol, 0.395% Tris HCl, 0.05% Tween, 20% Glycerol (glycerin, glycerine), 0.58% Sodium chloride

General Info

Function The UBE2V1-UBE2N and UBE2V2-UBE2N heterodimers catalyze the synthesis of non-canonical

'Lys-63'-linked polyubiquitin chains. This type of polyubiquitination does not lead to protein degradation by the proteasome. Mediates transcriptional activation of target genes. Plays a role in the control of progress through the cell cycle and differentiation. Plays a role in the error-free DNA repair pathway and contributes to the survival of cells after DNA damage. Acts together with the E3 ligases, HLTF and SHPRH, in the 'Lys-63'-linked poly-ubiquitination of PCNA upon genotoxic stress, which is required for DNA repair. Appears to act together with E3 ligase RNF5 in the 'Lys-63'-linked polyubiquitination of JKAMP thereby regulating JKAMP function by decreasing its association with components of the proteasome and ERAD.

Pathway

Protein modification; protein ubiquitination.

Sequence similarities

Belongs to the ubiquitin-conjugating enzyme family.

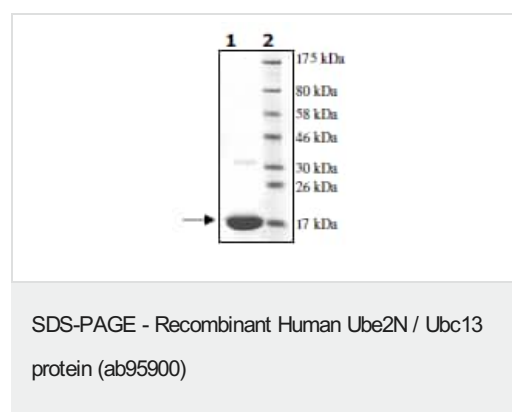
Post-translational modifications

Conjugation to ISG15 impairs formation of the thioester bond with ubiquitin but not interaction with UBE2V2.

Cellular localization

Nucleus. Cytoplasm.

Images



4-20% SDS-PAGE

Lane 1: ab95900 (5 µg)

Lane 2: Molecular weight markers

Please note: All products are "FOR RESEARCH USE ONLY. NOT FOR USE IN DIAGNOSTIC PROCEDURES"

Our Abpromise to you: Quality guaranteed and expert technical support

- Replacement or refund for products not performing as stated on the datasheet
- Valid for 12 months from date of delivery
- Response to your inquiry within 24 hours
- We provide support in Chinese, English, French, German, Japanese and Spanish
- Extensive multi-media technical resources to help you
- We investigate all quality concerns to ensure our products perform to the highest standards

If the product does not perform as described on this datasheet, we will offer a refund or replacement. For full details of the Abpromise, please visit <https://www.abcam.com/abpromise> or contact our technical team.

Terms and conditions

- Guarantee only valid for products bought direct from Abcam or one of our authorized distributors