

Product datasheet

Recombinant human WISP2 protein ab50040

[1 References](#) [1 Image](#)

Description

Product name	Recombinant human WISP2 protein
Biological activity	Biological Activity :The ED50 was determined by its ability to inhibit IGF-II induced proliferation of MCF-7 is between 10-20 ng/ml in the presence of 15 ng/ml of human IGF-II.
Purity	> 95 % SDS-PAGE. Endotoxin level is less than 0.1 ng per µg (1EU/µg).
Expression system	Escherichia coli
Protein length	Full length protein
Animal free	No
Nature	Recombinant
Species	Human
Sequence	<p> MQLCPTPCTC PWPPPRCPLG VPLVLDGCGC CRVCARRLGE PCDQLHVCD A SQGLVCQPGA GPGGRGALCL LAEDDSSCEV NGRLYREGET FQPHCSIRCR CEDGGFTCVPLCSEDVRLPS WDCPHPRRVE VLGKCCPEWV CGQGGGLGTQ PLPAQGPGQFS GLVSSLPPGV PCPEWSTAWG PCSTTCGLGM ATRVSNQNRFCRLETQRRLC LSRPCPPSRG RSPQNSAF </p>

Specifications

Our **Abpromise guarantee** covers the use of **ab50040** in the following tested applications.

The application notes include recommended starting dilutions; optimal dilutions/concentrations should be determined by the end user.

Applications	Western blot SDS-PAGE Functional Studies
Form	Lyophilized

Preparation and Storage

Stability and Storage Shipped at 4°C. The lyophilized protein is stable for a few weeks at room temperature. Store at -

20°C long term.

This product is an active protein and may elicit a biological response in vivo, handle with caution.

Reconstitution

Centrifuge the vial prior to opening. Reconstitute in water to a concentration of 0.1-1.0 mg/ml.

Note: Do not raise to neutral pH. Do not vortex. This solution can be stored at 2-8°C for up to 1 week. For extended storage, it is recommended to further dilute in a buffer containing a carrier protein (example 0.1% BSA) and store in working aliquots at -20°C to -80°C.

General Info

Function

May play an important role in modulating bone turnover. Promotes the adhesion of osteoblast cells and inhibits the binding of fibrinogen to integrin receptors. In addition, inhibits osteocalcin production.

Tissue specificity

Expressed in primary osteoblasts, fibroblasts, ovary, testes, and heart.

Sequence similarities

Belongs to the CCN family.

Contains 1 IGFBP N-terminal domain.

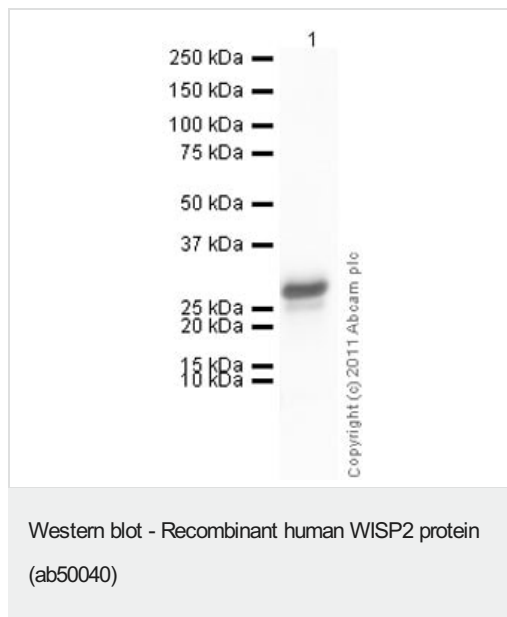
Contains 1 TSP type-1 domain.

Contains 1 VWFC domain.

Cellular localization

Secreted.

Images



Anti-WISP2 antibody ([ab38317](#)) at 1/100 dilution + Recombinant human WISP2 protein (ab50040) at 0.01 µg

Secondary

Goat Anti-Rabbit IgG H&L (HRP) preadsorbed ([ab97080](#)) at 1/5000 dilution

Developed using the ECL technique.

Performed under reducing conditions.

Exposure time: 10 seconds

Please note: All products are "FOR RESEARCH USE ONLY. NOT FOR USE IN DIAGNOSTIC PROCEDURES"

Our Abpromise to you: Quality guaranteed and expert technical support

- Replacement or refund for products not performing as stated on the datasheet
- Valid for 12 months from date of delivery
- Response to your inquiry within 24 hours

- We provide support in Chinese, English, French, German, Japanese and Spanish
- Extensive multi-media technical resources to help you
- We investigate all quality concerns to ensure our products perform to the highest standards

If the product does not perform as described on this datasheet, we will offer a refund or replacement. For full details of the Abpromise, please visit <https://www.abcam.com/abpromise> or contact our technical team.

Terms and conditions

- Guarantee only valid for products bought direct from Abcam or one of our authorized distributors