

Recombinant human Yes1 (mutated T348I) protein ab207151

2 Images

Description

Product name	Recombinant human Yes1 (mutated T348I) protein		
Biological activity	The specific activity of ab207151 was determined to be 50 nmol/min/mg.		
Purity	> 80 % Densitometry. Affinity purified.		
Expression system	Baculovirus infected Sf9 cells		
Accession	<u>P07947</u>		
Protein length	Full length protein		
Animal free	No		
Nature	Recombinant		
Species	Human		
Sequence	MGCISKSENKSPAIKYRPENTPEPVSTSVSHYGAEPTTVS PCPSSSAKGT AVNFSSLSMTPFGGSSGVTPFGGASSSFVVPSSYPAGL TGGVTIFVALY DYEARTTEDLSFKKGERFQIINTEGDWWEARSIATGKNG YIPSNYVAPA DSIQAEEWYFGKMGRKDAERLLLNPQNQRGIFLVRESETT KGAYSLSIRD WDEIRGDNVKHYKIRKLDNGGYITTRAQFDTLQKLVKHYT EHADGLCHK LTTVCPTVKPQTQGLAKDAWEIPRESLRLEVKLGGCGFG EVWMGTWNGTT KVAIKTLKPGTMMPEAFLQEAQIMKKLRHDKLVPLYAVVS EPEYMI EFMSKGSLLDFLKEGDGKYLKLPQLVDMAAQIADGMAYIE RMNYIHRDLR AANILVGENLVCKIADFGLARLIEDNEYTARQGAKFPIKWTA PEAALYGR FTIKSDVWSFGILQTELVTKGRVPYPGMVNVREVLEQVERG YRMPCPQGCP ESLHELMNLCWKKDPDERPTFEYIQSFLEDYFTATEPQYQ PGENL		

Predicted molecular weight	88 kDa including tags
Amino acids	1 to 543
Modifications	mutated Y348I
Tags	GST tag N-Terminus
Additional sequence information	NM_005433.3.

Specifications

Our **Abpromise guarantee** covers the use of **ab207151** in the following tested applications.

The application notes include recommended starting dilutions; optimal dilutions/concentrations should be determined by the end user.

Applications	Functional Studies SDS-PAGE
Form	Liquid

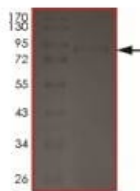
Preparation and Storage

Stability and Storage	Shipped on Dry Ice. Upon delivery aliquot. Store at -80°C. Avoid freeze / thaw cycle. pH: 7.50 Constituents: 0.79% Tris HCl, 0.87% Sodium chloride, 0.31% Glutathione, 0.003% EDTA, 0.004% DTT, 0.002% PMSF, 25% Glycerol (glycerin, glycerine) This product is an active protein and may elicit a biological response in vivo, handle with caution.
------------------------------	---

General Info

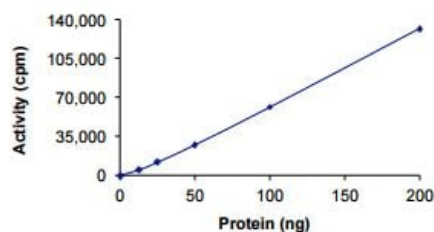
Function	Promotes infectivity of Neisseria gonorrhoeae in epithelial cells by phosphorylating MCP/CD46.
Sequence similarities	Belongs to the protein kinase superfamily. Tyr protein kinase family. SRC subfamily. Contains 1 protein kinase domain. Contains 1 SH2 domain. Contains 1 SH3 domain.
Post-translational modifications	Autophosphorylated.
Cellular localization	Cytoplasm > cytosol. In epithelial cells infected with Neisseria gonorrhoeae, forms aggregates beneath bacterial microcolonies.

Images



SDS-PAGE - Recombinant human Yes1 (mutated T348I) protein (ab207151)

SDS-PAGE analysis of ab207151, which was determined to be >80% pure by densitometry.



Electron Microscopy - Recombinant human Yes1 (mutated T348I) protein (ab207151)

The specific activity of ab207151 was determined to be 50 nmol/min/mg.

Please note: All products are "FOR RESEARCH USE ONLY. NOT FOR USE IN DIAGNOSTIC PROCEDURES"

Our Abpromise to you: Quality guaranteed and expert technical support

- Replacement or refund for products not performing as stated on the datasheet
- Valid for 12 months from date of delivery
- Response to your inquiry within 24 hours
- We provide support in Chinese, English, French, German, Japanese and Spanish
- Extensive multi-media technical resources to help you
- We investigate all quality concerns to ensure our products perform to the highest standards

If the product does not perform as described on this datasheet, we will offer a refund or replacement. For full details of the Abpromise, please visit <https://www.abcam.com/abpromise> or contact our technical team.

Terms and conditions

- Guarantee only valid for products bought direct from Abcam or one of our authorized distributors