

# Recombinant human Yes1 protein (Active) ab101504

[5 Images](#)

## Description

<b>Product name</b>	Recombinant human Yes1 protein (Active)
<b>Biological activity</b>	The Specific activity of ab101504 was determined to be 185 nmol/min/mg.
<b>Purity</b>	> 80 % Densitometry. The purity was determined to be >80% by densitometry. Affinity purified.
<b>Expression system</b>	Baculovirus infected Sf9 cells
<b>Accession</b>	<b><u>P07947</u></b>
<b>Protein length</b>	Full length protein
<b>Animal free</b>	No
<b>Nature</b>	Recombinant
<b>Species</b>	Human
<b>Molecular weight information</b>	Approx 91 kDa by SDS-PAGE
<b>Amino acids</b>	2 to 543
<b>Tags</b>	GST tag N-Terminus
<b>Additional sequence information</b>	GenBank: NM_005433

## Specifications

Our **Abpromise guarantee** covers the use of **ab101504** in the following tested applications.

The application notes include recommended starting dilutions; optimal dilutions/concentrations should be determined by the end user.

<b>Applications</b>	Western blot Functional Studies SDS-PAGE
<b>Form</b>	Liquid
<b>Additional notes</b>	<b><u>ab204877</u></b> (Poly (4:1 Glu, Tyr) peptide) can be utilized as a substrate for assessing kinase activity

## Preparation and Storage

<b>Stability and Storage</b>	Shipped on dry ice. Upon delivery aliquot and store at -80°C. Avoid freeze / thaw cycles. pH: 7.50 Constituents: 0.307% Glutathione, 0.00174% PMSF, 0.00385% DTT, 0.79% Tris HCl, 0.00292%
------------------------------	--

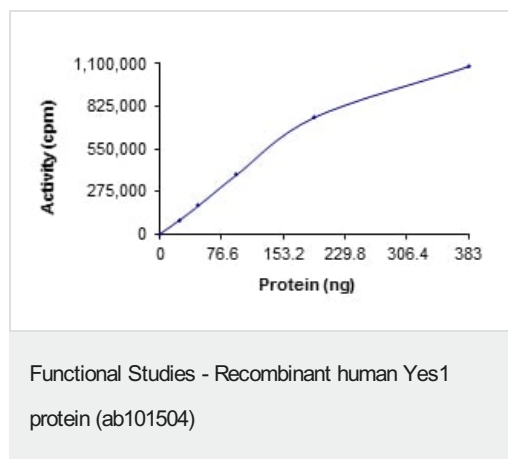
EDTA, 25% Glycerol (glycerin, glycerine), 0.87% Sodium chloride

This product is an active protein and may elicit a biological response in vivo, handle with caution.

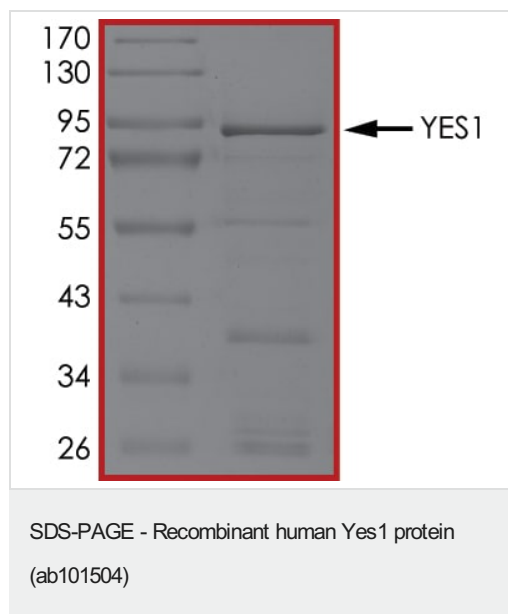
## General Info

<b>Function</b>	Promotes infectivity of <i>Neisseria gonorrhoeae</i> in epithelial cells by phosphorylating MCP/CD46.
<b>Sequence similarities</b>	Belongs to the protein kinase superfamily. Tyr protein kinase family. SRC subfamily. Contains 1 protein kinase domain. Contains 1 SH2 domain. Contains 1 SH3 domain.
<b>Post-translational modifications</b>	Autophosphorylated.
<b>Cellular localization</b>	Cytoplasm > cytosol. In epithelial cells infected with <i>Neisseria gonorrhoeae</i> , forms aggregates beneath bacterial microcolonies.

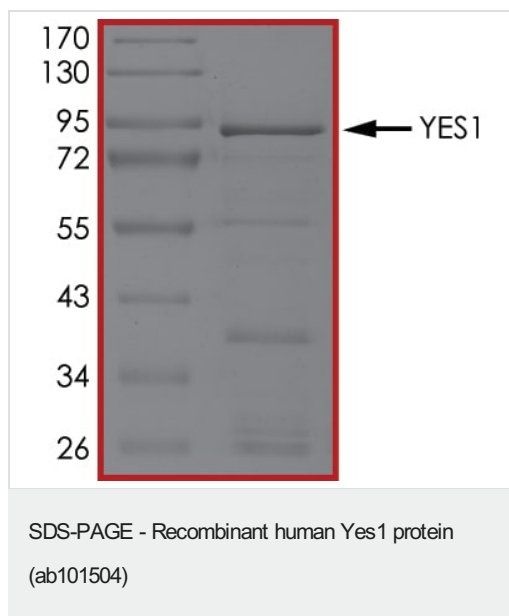
## Images



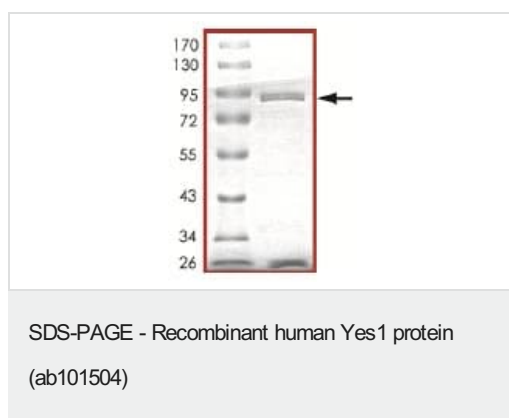
The specific activity of Yes1 (ab101504) was determined to be 173.2 nmol/min/mg as per activity assay protocol



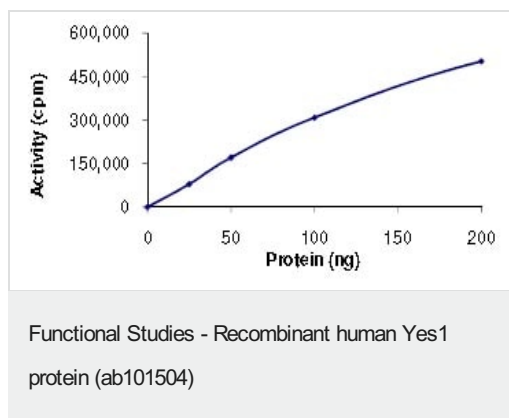
SDS PAGE analysis of ab101504



SDS PAGE analysis of ab101504



SDS-PAGE analysis of ab101504.



The Specific activity of ab101504 was determined to be 185 nmol/min/mg.

**Please note:** All products are "FOR RESEARCH USE ONLY. NOT FOR USE IN DIAGNOSTIC PROCEDURES"

#### Our Abpromise to you: Quality guaranteed and expert technical support

- Replacement or refund for products not performing as stated on the datasheet
- Valid for 12 months from date of delivery
- Response to your inquiry within 24 hours
- We provide support in Chinese, English, French, German, Japanese and Spanish

- Extensive multi-media technical resources to help you
- We investigate all quality concerns to ensure our products perform to the highest standards

If the product does not perform as described on this datasheet, we will offer a refund or replacement. For full details of the Abpromise, please visit <https://www.abcam.com/abpromise> or contact our technical team.

#### **Terms and conditions**

---

- Guarantee only valid for products bought direct from Abcam or one of our authorized distributors