

## Product datasheet

# Recombinant Mouse GDF15 protein (denatured) ab202199

[1 References](#) [1 Image](#)

### Description

<b>Product name</b>	Recombinant Mouse GDF15 protein (denatured)
<b>Purity</b>	> 90 % SDS-PAGE.
<b>Expression system</b>	Escherichia coli
<b>Accession</b>	<u><a href="#">Q9Z0J7</a></u>
<b>Protein length</b>	Full length protein
<b>Animal free</b>	No
<b>Nature</b>	Recombinant
<b>Species</b>	Mouse
<b>Sequence</b>	MGSSHHHHHHSSGLVPRGSHMGSSAHAHPRDSCPLGP GRCCHLETVQATL EDLGWSDWVLSPRQLQLSMCVGECPHLYRSANTHAQIK ARLHGLQPDKVP APCCVPSSYTPVVLHRTDSGVSLQTYDDLVARACHCA
<b>Predicted molecular weight</b>	15 kDa including tags
<b>Amino acids</b>	189 to 303
<b>Tags</b>	His tag N-Terminus
<b>Additional sequence information</b>	This product is for the mature full length protein from aa 189 to 303. The signal peptide and propeptide are not included. (NP_035949).

### Specifications

Our **Abpromise guarantee** covers the use of **ab202199** in the following tested applications.

The application notes include recommended starting dilutions; optimal dilutions/concentrations should be determined by the end user.

**Applications** SDS-PAGE

**Form** Liquid

### Preparation and Storage

## Stability and Storage

Shipped at 4°C. Store at +4°C short term (1-2 weeks). Upon delivery aliquot. Store at -20°C or -80°C. Avoid freeze / thaw cycle.

pH: 8.00

Constituents: 90% Phosphate Buffer, 10% Glycerol (glycerin, glycerine)

## General Info

### Tissue specificity

Highly expressed in placenta, with lower levels in prostate and colon and some expression in kidney.

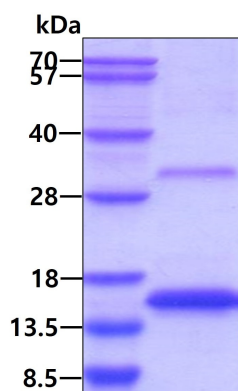
### Sequence similarities

Belongs to the TGF-beta family.

### Cellular localization

Secreted.

## Images



SDS-PAGE analysis of Recombinant Human GDF15 protein (ab202199), under reducing conditions. Proteins visualized by coomassie blue stain.

Lane 1: Molecular Weight Standards

Lane 2: 3 µg Recombinant Human GDF15 protein

SDS-PAGE - Recombinant Mouse GDF15 protein  
(denatured) (ab202199)

**Please note:** All products are "FOR RESEARCH USE ONLY. NOT FOR USE IN DIAGNOSTIC PROCEDURES"

## Our Abpromise to you: Quality guaranteed and expert technical support

- Replacement or refund for products not performing as stated on the datasheet
- Valid for 12 months from date of delivery
- Response to your inquiry within 24 hours
- We provide support in Chinese, English, French, German, Japanese and Spanish
- Extensive multi-media technical resources to help you
- We investigate all quality concerns to ensure our products perform to the highest standards

If the product does not perform as described on this datasheet, we will offer a refund or replacement. For full details of the Abpromise, please visit <https://www.abcam.com/abpromise> or contact our technical team.

## Terms and conditions

---

- Guarantee only valid for products bought direct from Abcam or one of our authorized distributors