

## Product datasheet

# Recombinant Mouse IgG1 protein ab180055

[1 References](#) [2 Images](#)

### Description

---

<b>Product name</b>	Recombinant Mouse IgG1 protein
<b>Purity</b>	> 95 % SDS-PAGE.
<b>Endotoxin level</b>	< 1.000 Eu/μg
<b>Expression system</b>	HEK 293 cells
<b>Accession</b>	<b><u>P01868</u></b>
<b>Protein length</b>	Protein fragment
<b>Animal free</b>	No
<b>Nature</b>	Recombinant
<b>Species</b>	Mouse
<b>Sequence</b>	VPEVSSVFIFPPKPKDVLTTITLTPKVTCVVVDISKDDPEVQ FSWFVDDVE VHTAQTQPREEQFNSTFRSVSELPIMHQDWLNGKEFKCR VNSAAFPAPIE KTISKTKGRPKAPQVYTIPPPKEQMAKDKVSLTCMITDFFP EDITVEWQW NGQPAENYKNTQPIMDTDGSYFVYSKLNQKSNWEAGNT FTCSVLHEGLH NHHTEKSLSHSPGK
<b>Predicted molecular weight</b>	24 kDa
<b>Amino acids</b>	111 to 324
<b>Additional sequence information</b>	The fragment corresponds to the CH2 and CH3 domains. Genbank entry: AAK53870.1.

### Specifications

---

Our **Abpromise guarantee** covers the use of **ab180055** in the following tested applications.

The application notes include recommended starting dilutions; optimal dilutions/concentrations should be determined by the end user.

<b>Applications</b>	SDS-PAGE HPLC
<b>Form</b>	Lyophilized

### Preparation and Storage

---

**Stability and Storage**

Shipped at 4°C. Store at 4°C (stable for up to 12 months). Store at -80°C. Avoid freeze / thaw cycle. For long term storage it is recommended to add a carrier protein on reconstitution (0.1% HSA or BSA).

pH: 7.4

Constituents: 5% Trehalose, 0.61% Tris, 0.75% Glycine, L-Arginine, Sodium chloride

Lyophilized from 0.22 µm filtered solution.

**Reconstitution**

Reconstitute with sterile deionized water to a concentration of 200 µg/ml.

---

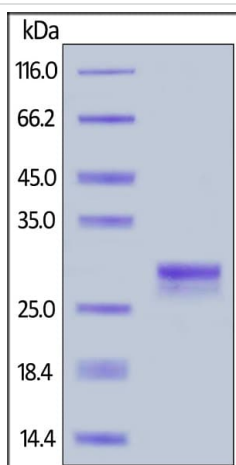
**General Info****Relevance**

There are four IgG subclasses (IgG1, 2, 3 and 4) in humans, named in order of their abundance in serum (IgG1 being the most abundant).

**Cellular localization**

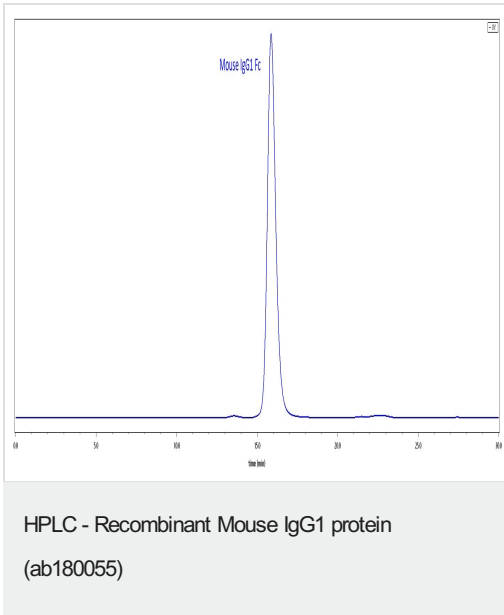
Secreted. Cell membrane; Single-pass membrane protein

---

**Images**

SDS-PAGE analysis of ab180055 under reducing conditions. Gel stained overnight with Coomassie Blue. The protein has a calculated MW of 24.3 kDa. The reduced protein migrates as 28-30 kDa due to glycosylation.

SDS-PAGE - Recombinant Mouse IgG1 protein (Fc Chimera) (ab180055)



The purity of ab180055 was greater than 95% as determined by SEC-HPLC.

**Please note:** All products are "FOR RESEARCH USE ONLY. NOT FOR USE IN DIAGNOSTIC PROCEDURES"

### Our Abpromise to you: Quality guaranteed and expert technical support

---

- Replacement or refund for products not performing as stated on the datasheet
- Valid for 12 months from date of delivery
- Response to your inquiry within 24 hours
- We provide support in Chinese, English, French, German, Japanese and Spanish
- Extensive multi-media technical resources to help you
- We investigate all quality concerns to ensure our products perform to the highest standards

If the product does not perform as described on this datasheet, we will offer a refund or replacement. For full details of the Abpromise, please visit <https://www.abcam.com/abpromise> or contact our technical team.

### Terms and conditions

---

- Guarantee only valid for products bought direct from Abcam or one of our authorized distributors