

Product datasheet

Recombinant mouse MSK2 / RSK-B protein ab125610

[2 Images](#)

Description

Product name	Recombinant mouse MSK2 / RSK-B protein
Biological activity	Specific activity: 9 nmol/mg/min.
Purity	> 95 % Densitometry. Affinity purified.
Expression system	Baculovirus infected Sf9 cells
Accession	<u>Q9Z2B9</u>
Protein length	Full length protein
Animal free	No
Nature	Recombinant
Species	Mouse
Predicted molecular weight	114 kDa including tags
Amino acids	1 to 773

Specifications

Our **Abpromise guarantee** covers the use of **ab125610** in the following tested applications.

The application notes include recommended starting dilutions; optimal dilutions/concentrations should be determined by the end user.

Applications	Western blot Functional Studies SDS-PAGE
Form	Liquid
Additional notes	<u>ab204879</u> (RPS6 peptide) can be utilized as a substrate for assessing kinase activity

Preparation and Storage

Stability and Storage	Shipped on dry ice. Upon delivery aliquot and store at -80°C. Avoid freeze / thaw cycles. pH: 7.50 Constituents: 0.31% Glutathione, 0.002% PMSF, 0.005% DTT, 0.79% Tris HCl, 0.003% EDTA, 25% Glycerol (glycerin, glycerine), 0.88% Sodium chloride This product is an active protein and may elicit a biological response in vivo, handle with caution.
------------------------------	---

General Info

Function

Serine/threonine kinase that may play a role in mediating the growth-factor and stress induced activation of the transcription factor CREB. Essential role in the control of RELA transcriptional activity in response to TNF. Phosphorylates 'Ser-10' of histone H3 in response to mitogenics, stress stimuli and epidermal growth-factor (EGF) and result in the transcriptional activation of several immediate early genes, including proto-oncogenes FOS and JUN (By similarity). Mediates the mitogen- and stress-induced phosphorylation of high mobility group protein 14 (HMG-14).

Sequence similarities

Belongs to the protein kinase superfamily. AGC Ser/Thr protein kinase family. S6 kinase subfamily.

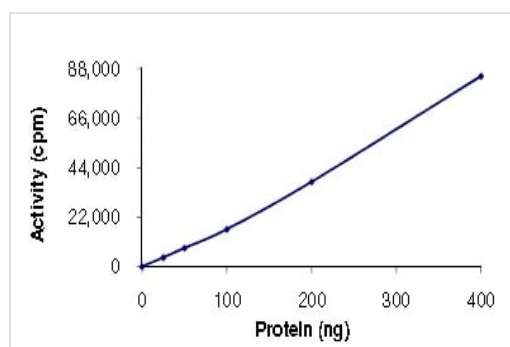
Contains 1 AGC-kinase C-terminal domain.

Contains 2 protein kinase domains.

Cellular localization

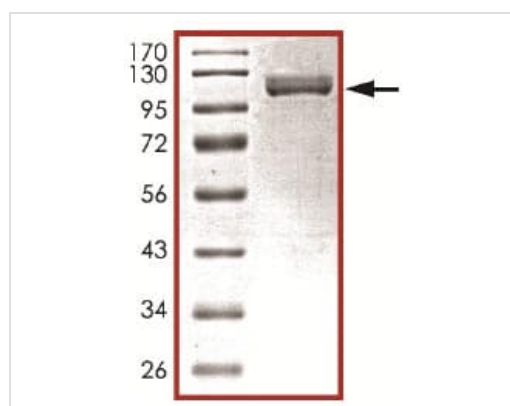
Nucleus.

Images



The specific activity of ab125610 was determined to be 9 nmol/mg/min by Kinase Assay.

Functional Studies - Recombinant mouse MSK2 / RSK-B protein (ab125610)



SDS-PAGE analysis of ab125610.

SDS-PAGE - Recombinant mouse MSK2 / RSK-B protein (ab125610)

Our Abpromise to you: Quality guaranteed and expert technical support

- Replacement or refund for products not performing as stated on the datasheet
- Valid for 12 months from date of delivery
- Response to your inquiry within 24 hours

- We provide support in Chinese, English, French, German, Japanese and Spanish
- Extensive multi-media technical resources to help you
- We investigate all quality concerns to ensure our products perform to the highest standards

If the product does not perform as described on this datasheet, we will offer a refund or replacement. For full details of the Abpromise, please visit <https://www.abcam.com/abpromise> or contact our technical team.

Terms and conditions

- Guarantee only valid for products bought direct from Abcam or one of our authorized distributors