

Product datasheet

Recombinant mouse PD-L1 protein (Fc Chimera) ab216192

[2 Images](#)

Description

Product name	Recombinant mouse PD-L1 protein (Fc Chimera)
Purity	> 90 % SDS-PAGE.
Expression system	HEK 293 cells
Accession	<u>Q9EP73</u>
Protein length	Protein fragment
Animal free	No
Nature	Recombinant
Species	Mouse
Sequence	FT ITAPKDLVYV EYGSNVTMEC RFPVERELDL LALVYWEKE DEQVIQFVAG EEDLKPQHSN FRGRASLPKD QLLKGNAALQ ITDVKLQDAG VYCCIISYGG ADYKRITLKV NAPYRKINQR ISVDPATSEH ELICQAEGYP EAEVWMTNSD HQPVSGKRSV TTSRTEGMLL NVTSSLRVNA TANDVFYCTF WRSQPGQNHT AELIPELPA THPPQNRT
Predicted molecular weight	52 kDa including tags
Amino acids	19 to 238
Additional sequence information	Extracellular domain fused at the C-terminus to the Fc portion of mouse IgG2a.

Specifications

Our **Abpromise guarantee** covers the use of **ab216192** in the following tested applications.

The application notes include recommended starting dilutions; optimal dilutions/concentrations should be determined by the end user.

Applications	SDS-PAGE
Form	Liquid
Additional notes	Useful for the study of protein-protein interaction and <i>in vitro</i> and <i>in vivo</i> protein function studies. Storing diluted protein is not recommended, if necessary, use carrier protein (BSA 0.1 – 0.5%).

Preparation and Storage

Stability and Storage

Shipped at 4°C. Store at -80°C. Avoid freeze / thaw cycle.

pH: 7.40

Constituents: 20% Glycerol (glycerin, glycerine), 0.02% Potassium chloride, 0.64% Sodium chloride, Phosphate Buffer

This product is an active protein and may elicit a biological response in vivo, handle with caution.

General Info

Function

Involved in the costimulatory signal, essential for T-cell proliferation and production of IL10 and IFNG, in an IL2-dependent and a PDCD1-independent manner. Interaction with PDCD1 inhibits T-cell proliferation and cytokine production.

Tissue specificity

Highly expressed in the heart, skeletal muscle, placenta and lung. Weakly expressed in the thymus, spleen, kidney and liver. Expressed on activated T- and B-cells, dendritic cells, keratinocytes and monocytes.

Sequence similarities

Belongs to the immunoglobulin superfamily. BTN/MOG family.

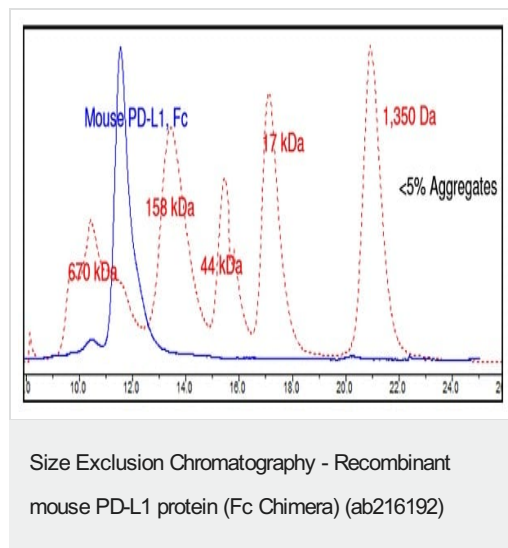
Contains 1 Ig-like C2-type (immunoglobulin-like) domain.

Contains 1 Ig-like V-type (immunoglobulin-like) domain.

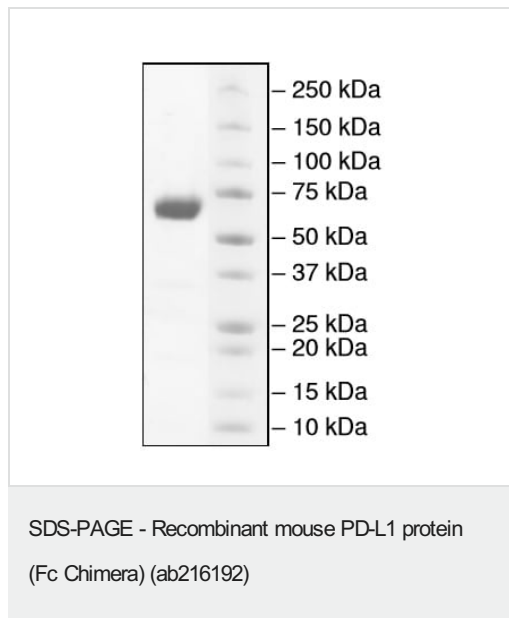
Cellular localization

Cell membrane and Endomembrane system.

Images



Gel Filtration Curve.



4-20% SDS-PAGE Coomassie staining:

3 μ g ab216192.

Please note: All products are "FOR RESEARCH USE ONLY. NOT FOR USE IN DIAGNOSTIC PROCEDURES"

Our Abpromise to you: Quality guaranteed and expert technical support

- Replacement or refund for products not performing as stated on the datasheet
- Valid for 12 months from date of delivery
- Response to your inquiry within 24 hours
- We provide support in Chinese, English, French, German, Japanese and Spanish
- Extensive multi-media technical resources to help you
- We investigate all quality concerns to ensure our products perform to the highest standards

If the product does not perform as described on this datasheet, we will offer a refund or replacement. For full details of the Abpromise, please visit <https://www.abcam.com/abpromise> or contact our technical team.

Terms and conditions

- Guarantee only valid for products bought direct from Abcam or one of our authorized distributors