

Product datasheet

Recombinant rat CXCL1/GRO alpha protein ab9773

1 Image

Description

Product name	Recombinant rat CXCL1/GRO alpha protein
Purity	> 98 % SDS-PAGE. Endotoxin level is less than 0.1 ng per g (1EU/g).
Expression system	Escherichia coli
Accession	<u>P14095</u>
Protein length	Full length protein
Animal free	No
Nature	Recombinant
Species	Rat
Sequence	APVANELRCQCLQTVAGIHFKNIQSLKVMP PGPHCTQTEVIATLKNGREACLDPEAPMVQ KIVQKMLKGVPK
Predicted molecular weight	11 kDa
Amino acids	25 to 96

Specifications

Our **Abpromise guarantee** covers the use of **ab9773** in the following tested applications.

The application notes include recommended starting dilutions; optimal dilutions/concentrations should be determined by the end user.

Applications	Functional Studies SDS-PAGE Western blot
Form	Lyophilized
Additional notes	The maximal chemotactic activity of rat CXCL1/GRO alpha on rat neutrophils was determined by its ability to chemoattract rat neutrophils using a concentration range of 10.0-100.0 ng/ml.

Preparation and Storage

Stability and Storage	Shipped at 4°C. Store at +4°C short term (1-2 weeks). Upon delivery aliquot. Store at -20°C or -80°C. Avoid freeze / thaw cycle.
------------------------------	--

This product is an active protein and may elicit a biological response in vivo, handle with caution.

Reconstitution

For lot specific reconstitution information please contact our Scientific Support Team.

General Info

Function

Has chemotactic activity for neutrophils. May play a role in inflammation and exerts its effects on endothelial cells in an autocrine fashion. In vitro, the processed forms GRO-alpha(4-73), GRO-alpha(5-73) and GRO-alpha(6-73) show a 30-fold higher chemotactic activity.

Sequence similarities

Belongs to the intercrine alpha (chemokine CxC) family.

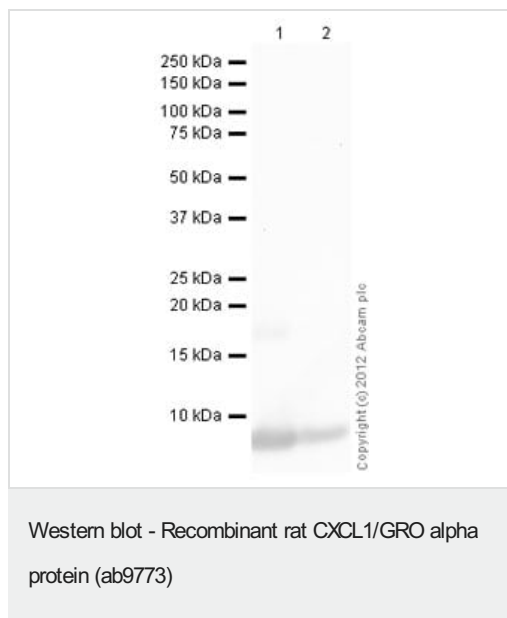
Post-translational modifications

N-terminal processed forms GRO-alpha(4-73), GRO-alpha(5-73) and GRO-alpha(6-73) are produced by proteolytic cleavage after secretion from peripheral blood monocytes.

Cellular localization

Secreted.

Images



All lanes : Anti-CXCL1/GRO alpha antibody ([ab86436](#)) at 0.5 µg/ml

Lane 1 : Recombinant rat CXCL1/GRO alpha protein (ab9773) at 0.1 µg

Lane 2 : Recombinant rat CXCL1/GRO alpha protein (ab9773) at 0.01 µg

Secondary

All lanes : Goat Anti-Rabbit IgG H&L (HRP) preadsorbed ([ab97080](#)) at 1/5000 dilution

Developed using the ECL technique.

Performed under reducing conditions.

Exposure time: 1 minute

Please note: All products are "FOR RESEARCH USE ONLY. NOT FOR USE IN DIAGNOSTIC PROCEDURES"

Our Abpromise to you: Quality guaranteed and expert technical support

- Replacement or refund for products not performing as stated on the datasheet
- Valid for 12 months from date of delivery
- Response to your inquiry within 24 hours
- We provide support in Chinese, English, French, German, Japanese and Spanish
- Extensive multi-media technical resources to help you

- We investigate all quality concerns to ensure our products perform to the highest standards

If the product does not perform as described on this datasheet, we will offer a refund or replacement. For full details of the Abpromise, please visit <https://www.abcam.com/abpromise> or contact our technical team.

Terms and conditions

- Guarantee only valid for products bought direct from Abcam or one of our authorized distributors