

Recombinant Rat IL-11RA protein (His tag) ab219288

1 Image

Description	
Product name	Recombinant Rat IL-11RA protein (His tag)
Purity	> 85 % SDS-PAGE. Affinity purified
Endotoxin level	< 1.000 Eu/µg
Expression system	Baculovirus infected insect cells
Accession	<u>Q99MF4</u>
Protein length	Protein fragment
Animal free	No
Nature	Recombinant
Species	Rat
Sequence	TPCPQAWGPPGVQYQQPGRPVMLCCPGVNAGTPVSWF RDGDSRLLQGPDS GLGHRLVLAQVDSRDEGTYVCRTLDGVFGGMVTLKLGSP PARPEVSCQAV DYENFSCTWSPGRVSGLPTRYLTSYRKKTLPGAESQRES PSTGPWPCPQD PLEASRCVVHGAEFWSEYRINVTEVNPLGASTCLLDVRLQ RILRPDPPQG LRVESVPGYPRRLHASWTYPASWRRQPHLLKFRLQYRP AQHPAWSTVEP IGLEELITDAVAGLPHAVRVSARDFLDAGTWSAWSPEAW GTPSTGPLRDE VPDGSRGHEQKLEAAQEDSPAPPSPSLQPDPRPLDHR DPLEQVAVLAVE HHHHHH
Predicted molecular weight	39 kDa including tags
Amino acids	24 to 371
Tags	His tag C-Terminus
Additional sequence information	Extracellular domain (NP_620816).

Specifications

Our Abpromise guarantee covers the use of **ab219288** in the following tested applications.

The application notes include recommended starting dilutions; optimal dilutions/concentrations should be determined by the end user.

Applications SDS-PAGE

Form Liquid

Preparation and Storage

Stability and Storage Shipped at 4°C. Store at +4°C short term (1-2 weeks). Upon delivery aliquot. Store at -20°C or -80°C. Avoid freeze / thaw cycle.

pH: 7.40

Constituents: 90% PBS, 10% Glycerol (glycerin, glycerine)

General Info

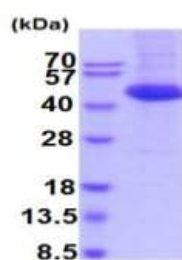
Function Receptor for interleukin-11. The receptor systems for IL6, LIF, OSM, CNTF, IL11 and CT1 can utilize IL6ST for initiating signal transmission. The IL11/IL11RA/IL6ST complex may be involved in the control of proliferation and/or differentiation of skeletogenic progenitor or other mesenchymal cells.

Tissue specificity Expressed in a number of cell lines, including the myelogenous leukemia cell line K562, the megakaryocytic leukemia cell line Mo7E, the erythroleukemia cell line TF1, and the osteosarcoma cell lines, MG-63 and Saos-2. Also expressed in normal and malignant prostate epithelial cell lines. Expression levels are increased in prostate carcinoma.

Sequence similarities Belongs to the type I cytokine receptor family. Type 3 subfamily.
Contains 2 fibronectin type-III domains.
Contains 1 Ig-like C2-type (immunoglobulin-like) domain.

Cellular localization Membrane.

Images



15% SDS-PAGE analysis of 3 µg ab219288.

SDS-PAGE - Recombinant Rat IL-11RA protein (His tag) (ab219288)

Please note: All products are "FOR RESEARCH USE ONLY. NOT FOR USE IN DIAGNOSTIC PROCEDURES"

Our Abpromise to you: Quality guaranteed and expert technical support

- Replacement or refund for products not performing as stated on the datasheet
- Valid for 12 months from date of delivery
- Response to your inquiry within 24 hours
- We provide support in Chinese, English, French, German, Japanese and Spanish
- Extensive multi-media technical resources to help you
- We investigate all quality concerns to ensure our products perform to the highest standards

If the product does not perform as described on this datasheet, we will offer a refund or replacement. For full details of the Abpromise, please visit <https://www.abcam.com/abpromise> or contact our technical team.

Terms and conditions

- Guarantee only valid for products bought direct from Abcam or one of our authorized distributors