

# Recombinant rhesus monkey CD4 protein (His tag) ab208305

[1 References](#)   [3 Images](#)

| Description                |   |
|----------------------------|---|
| Product name               | Recombinant rhesus monkey CD4 protein (His tag)   |
| Biological activity        | <p>Measured by its binding ability in a functional ELISA. Immobilized Recombinant Rhesus monkey CD4 protein (His Tag) (ab208305) at 1 µg/mL (100 µL/well) can bind Ibalizumab with a linear range of 0.2-13 ng/mL.</p> <p>Measured by its binding ability in a functional ELISA. Immobilized Ibalizumab at 1 µg/mL (100 µL/well) can bind Recombinant Rhesus monkey CD4 protein (His Tag) (ab208305) with a linear range of 0.8-13 ng/mL.</p>                       |
| Purity                     | > 95 % SDS-PAGE.  |
| Endotoxin level            | < 1.000 Eu/µg   |
| Expression system          | HEK 293 cells   |
| Accession                  | <b><u>G7N5T8</u></b>  |
| Protein length             | Protein fragment  |
| Animal free                | No  |
| Nature                     | Recombinant   |
| Species                    | Rhesus monkey   |
| Sequence                   | <p>KKVVL GKKGDTVELT CNASQKKNTQ FHWKNSNQIK<br/>ILGIQGSFLT KGPSKLSdra DSRKSLWDQG CFSMIILNLK<br/>IEDSDTYICE VENKKEEVEL LVFGLTANSd THLLEGQSLT<br/>LTLESPPGSS PSVKCRSPGG KNIQGGRTIS<br/>VPQLERQDSG TWTCTVSQDQ KTVEFKIDV<br/>VLAFQKASST VYKKEGEQVE FSFPLAFTLE<br/>KLTGSGELWW QAERASSSKS WITFDLKNKE<br/>VSVKRVTDQP KLQMGKKLPL HLTLPQALPQ<br/>YAGSGNLTLa LEAKTGKLHQ EVNLVVMRAT<br/>QFQENLTCEV WGPTSPKLTL SLKLENKGAT<br/>VSKQAKAVVW LNPEAGMWQC LLSDSGQVLL<br/>ESNIKVVPTW</p> |
| Predicted molecular weight | 42 kDa including tags   |
| Amino acids                | 26 to 390   |

**Tags** His tag C-Terminus

## Specifications

---

Our **Abpromise guarantee** covers the use of **ab208305** in the following tested applications.

The application notes include recommended starting dilutions; optimal dilutions/concentrations should be determined by the end user.

|                         |  |
|-------------------------|--|
| <b>Applications</b>     | ELISA<br>SDS-PAGE  |
| <b>Form</b>             | Lyophilized  |
| <b>Additional notes</b> | This product is stable after storage at:<br>-20 °C to -70 °C for 12 months in lyophilized state;<br>-70 °C for 3 months under sterile conditions after reconstitution. |

## Preparation and Storage

---

|                              |   |
|------------------------------|---|
| <b>Stability and Storage</b> | Shipped at 4°C. Upon delivery aliquot. Store at -20°C or -80°C. Avoid freeze / thaw cycle. Please see notes section.<br><br>pH: 7.40<br>Constituent: 97% PBS<br><br>Note: 5-10% trehalose is commonly used for freeze drying, and after reconstitution, the trehalose is mostly about 3-5%.<br><br>This product is an active protein and may elicit a biological response in vivo, handle with caution. |
| <b>Reconstitution</b>        | Reconstitute with sterile deionized water to a concentration of 200 µg/ml.  |

## General Info

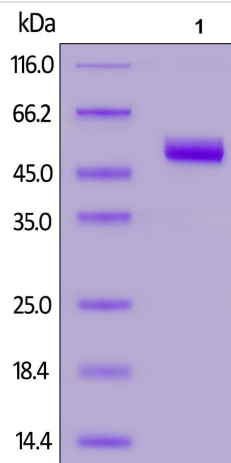
---

|   |  |
|---|--|
| <b>Function</b>                         | Accessory protein for MHC class-II antigen/T-cell receptor interaction. May regulate T-cell activation. Induces the aggregation of lipid rafts.  |
| <b>Sequence similarities</b>            | Contains 3 Ig-like C2-type (immunoglobulin-like) domains.<br>Contains 1 Ig-like V-type (immunoglobulin-like) domain.   |
| <b>Post-translational modifications</b> | Palmitoylation and association with LCK contribute to the enrichment of CD4 in lipid rafts.  |
| <b>Cellular localization</b>            | Cell membrane. Localizes to lipid rafts. Removed from plasma membrane by HIV-1 Nef protein that increases clathrin-dependent endocytosis of this antigen to target it to lysosomal degradation. Cell surface expression is also down-modulated by HIV-1 Envelope polyprotein gp160 that interacts with, and sequesters CD4 in the endoplasmic reticulum. |

---

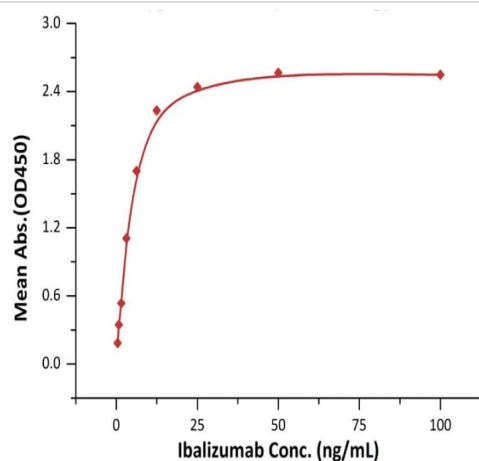
## Images

---



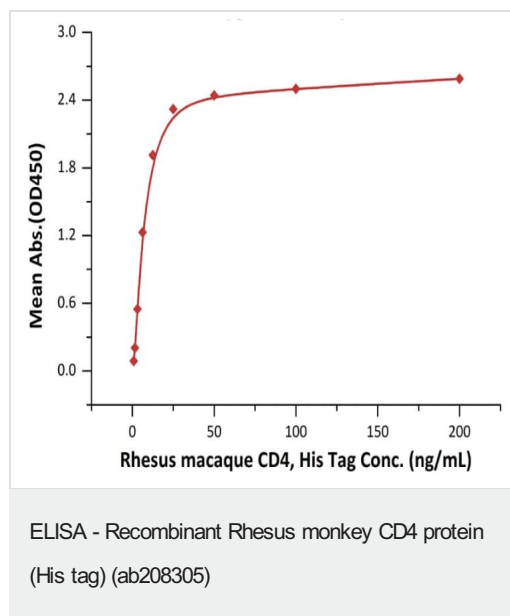
SDS-PAGE - Recombinant Rhesus monkey CD4 protein (His tag) (ab208305)

SDS-PAGE analysis of reduced ab208305 (Lane 1) stained overnight with Coomassie Blue. The protein migrates as 50-57 kDa under reducing condition due to glycosylation.



ELISA - Recombinant Rhesus monkey CD4 protein (His tag) (ab208305)

Immobilized Recombinant Rhesus monkey CD4 protein (His Tag) (ab208305) at 1  $\mu\text{g/mL}$  (100  $\mu\text{L/well}$ ) can bind Ibalizumab with a linear range of 0.2-13 ng/mL.



Immobilized Ibalizumab at 1 µg/mL (100 µL/well) can bind Recombinant Rhesus monkey CD4 protein (His Tag) (ab208305) with a linear range of 0.8-13 ng/mL.

**Please note:** All products are "FOR RESEARCH USE ONLY. NOT FOR USE IN DIAGNOSTIC PROCEDURES"

### Our Abpromise to you: Quality guaranteed and expert technical support

- Replacement or refund for products not performing as stated on the datasheet
- Valid for 12 months from date of delivery
- Response to your inquiry within 24 hours
- We provide support in Chinese, English, French, German, Japanese and Spanish
- Extensive multi-media technical resources to help you
- We investigate all quality concerns to ensure our products perform to the highest standards

If the product does not perform as described on this datasheet, we will offer a refund or replacement. For full details of the Abpromise, please visit <https://www.abcam.com/abpromise> or contact our technical team.

### Terms and conditions

- Guarantee only valid for products bought direct from Abcam or one of our authorized distributors