

## Product datasheet

# Donkey F(ab')<sub>2</sub> Anti-Rabbit IgG H&L (PE) preadsorbed ab7007

[32 References](#) [2 Images](#)

### Overview

Product name	Donkey F(ab') <sub>2</sub> Anti-Rabbit IgG H&L (PE) preadsorbed
Host species	Donkey
Target species	Rabbit
Tested applications	<b>Suitable for:</b> IHC-P, ICC/IF, Immunomicroscopy, Flow Cyt
Minimal cross-reactivity	Chicken, Cow, Goat, Guinea pig, Hamster, Horse, Human, Mouse, Rat, Sheep <a href="#">more details</a>
Immunogen	Rabbit IgG whole molecule
Conjugation	PE. Ex: 488nm, Em: 575nm

### Properties

Form	Liquid
Storage instructions	Shipped at 4°C. Store at +4°C.
Storage buffer	pH: 6.50 Preservative: 0.01% Sodium azide Constituents: 0.88% Sodium chloride, 1% BSA, 0.42% Tripotassium orthophosphate
Purity	Immunogen affinity purified
Purification notes	Prepared from monospecific antiserum by immunoaffinity chromatography using rabbit IgG coupled to agarose beads followed by solid phase adsorption(s) to remove any unwanted reactivities, pepsin digestion and chromatographic separation. Minimum Cross Reactivity to Bovine, Chicken, Goat, Guinea Pig, Hamster, Horse, Human, Mouse, Rat & Sheep Serum Proteins
Conjugation notes	R-Phycoerythrin (R-PE) Molecular Weight 240,000 daltons) Absorption Wavelength: 488 nm Emission Wavelength: 575 nm OD <sub>566nm</sub> /OD <sub>280nm</sub> : 2.8
Clonality	Polyclonal
Isotype	IgG
General notes	Can be used in immunomicroscopy and flow cytometry or FACS analysis as well as other

antibody based fluorescent assays requiring extremely low background levels, absence of F(c) mediated binding, lot-to-lot consistency, high titer and specificity.

## Applications

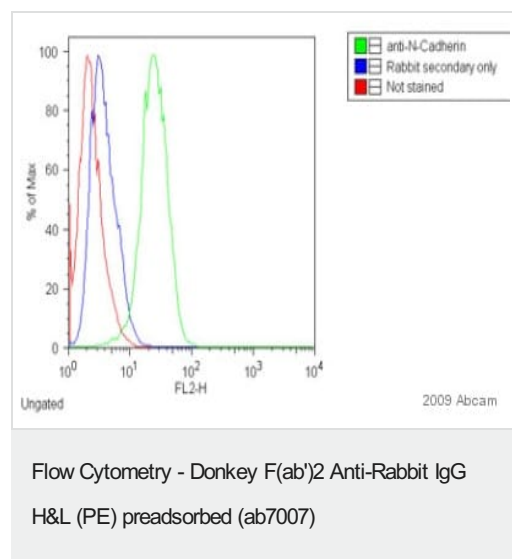
### The Abpromise guarantee

Our **Abpromise guarantee** covers the use of ab7007 in the following tested applications.

The application notes include recommended starting dilutions; optimal dilutions/concentrations should be determined by the end user.

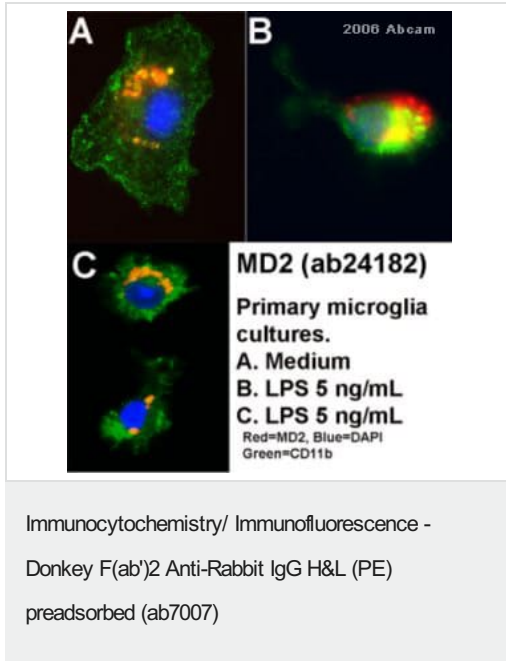
Application	Abreviews	Notes
IHC-P		1/200.
ICC/IF		1/100 - 1/250.
Immunomicroscopy		Use at an assay dependent dilution.
Flow Cyt		1/100 - 1/250. The maximum amount of reagent required to stain $1 \times 10^6$ cells in flow cytometry is approximately 1.0 ug of antibody conjugate.

## Images



ab7007 was used with the primary antibody **ab18203** in Flow Cyt.

See Abreview on **ab18203**.



ab7007 was used at dilution 1/250 with the primary antibody **ab24182** in ICC/IF. See the review on **ab24182**.

**Please note:** All products are "FOR RESEARCH USE ONLY. NOT FOR USE IN DIAGNOSTIC PROCEDURES"

### Our Abpromise to you: Quality guaranteed and expert technical support

- Replacement or refund for products not performing as stated on the datasheet
- Valid for 12 months from date of delivery
- Response to your inquiry within 24 hours
- We provide support in Chinese, English, French, German, Japanese and Spanish
- Extensive multi-media technical resources to help you
- We investigate all quality concerns to ensure our products perform to the highest standards

If the product does not perform as described on this datasheet, we will offer a refund or replacement. For full details of the Abpromise, please visit <https://www.abcam.com/abpromise> or contact our technical team.

### Terms and conditions

- Guarantee only valid for products bought direct from Abcam or one of our authorized distributors