

Product datasheet

Donkey Anti-Goat IgG H&L (Cy3 ®) preadsorbed ab6949

★★★★★ [2 Abreviews](#) [41 References](#) [1 Image](#)

Overview

Product name	Donkey Anti-Goat IgG H&L (Cy3 ®) preadsorbed
Host species	Donkey
Target species	Goat
Tested applications	Suitable for: ICC/IF, IHC-P, IHC-Fr, ICC, Flow Cyt, ELISA, WB
Minimal cross-reactivity	Cow, Guinea pig, Hamster, Horse, Mouse, Rabbit, Rat more details
Immunogen	Full length native Goat IgG (purified).
Conjugation	Cy3 ®. Ex: 552nm, Em: 565nm

Properties

Form	Liquid
Storage instructions	Shipped at 4°C. Store at +4°C.
Storage buffer	pH: 6.50 Preservative: 0.01% Sodium azide Constituents: 0.42% Potassium phosphate, 0.87% Sodium chloride, 1% BSA
Purity	Immunogen affinity purified
Purification notes	This product was prepared from monospecific antiserum by immunoaffinity chromatography using Goat IgG coupled to agarose beads followed by solid phase adsorption(s) to remove any unwanted reactivities and extensive dialysis against the buffer stated above.
Conjugation notes	Cy3.29 (Cyanine 3.29-OSu) (Molecular Weight 949 daltons) Absorption Wavelength: 552 nm Emission Wavelength: 565 nm Fluorochrome/Protein Ratio: 8.1 moles Cy3 per mole of Donkey IgG
Clonality	Polyclonal
Isotype	IgG
General notes	Cy™ and CyDye™ are registered trademarks of Cytiva. This secondary antibody is specifically designed for the detection of multiple primary antibodies (polyclonal or monoclonal) of different host species in experiments where cells are simultaneously labeled without unwanted cross reaction.

Applications

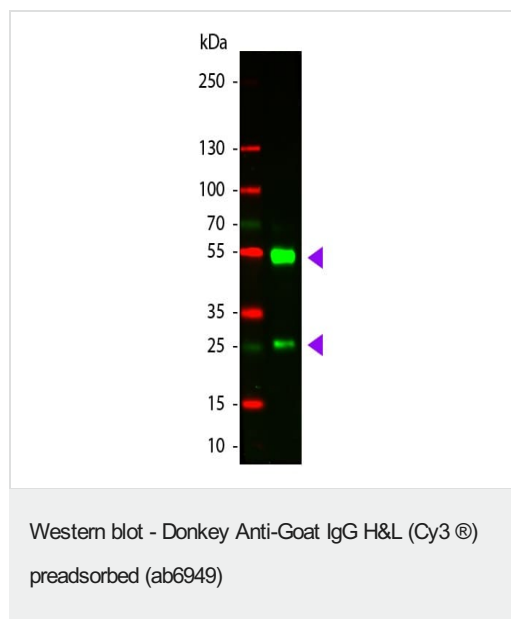
The Abpromise guarantee

Our **Abpromise guarantee** covers the use of ab6949 in the following tested applications.

The application notes include recommended starting dilutions; optimal dilutions/concentrations should be determined by the end user.

Application	Abreviews	Notes
ICC/IF		1/1000 - 1/5000.
IHC-P		Use at an assay dependent concentration.
IHC-Fr	★★★★★ (1)	Use at an assay dependent concentration.
ICC		Use at an assay dependent concentration.
Flow Cyt		Use at an assay dependent concentration.
ELISA		1/10000 - 1/50000.
WB		1/1000. Predicted molecular weight: 36 kDa.

Images



Donkey Anti-Goat IgG H&L (Cy3 ®) preadsorbed (ab6949) at 1000 cells + Goat IgG, 50 ng

Predicted band size: 36 kDa

Both the heavy and light chains of Goat IgG are observed.

Please note: All products are "FOR RESEARCH USE ONLY. NOT FOR USE IN DIAGNOSTIC PROCEDURES"

Our Abpromise to you: Quality guaranteed and expert technical support

- Replacement or refund for products not performing as stated on the datasheet
- Valid for 12 months from date of delivery
- Response to your inquiry within 24 hours

- We provide support in Chinese, English, French, German, Japanese and Spanish
- Extensive multi-media technical resources to help you
- We investigate all quality concerns to ensure our products perform to the highest standards

If the product does not perform as described on this datasheet, we will offer a refund or replacement. For full details of the Abpromise, please visit <https://www.abcam.com/abpromise> or contact our technical team.

Terms and conditions

- Guarantee only valid for products bought direct from Abcam or one of our authorized distributors