

Product datasheet

Donkey Anti-Rabbit IgG H&L (Alexa Fluor® 647) preadsorbed ab150063

★★★★★ [4 Abreviews](#) [39 References](#) [4 Images](#)

Overview

Product name	Donkey Anti-Rabbit IgG H&L (Alexa Fluor® 647) preadsorbed
Host species	Donkey
Target species	Rabbit
Specificity	By immunoelectrophoresis and ELISA this antibody reacts specifically with rabbit IgG and with light chains common to other rabbit immunoglobulins. No antibody was detected against non-immunoglobulin serum proteins. Reduced cross-reactivity to bovine, chicken, goat, human, mouse, pig and rat IgG was detected. This antibody may cross react with IgG from other species.
Tested applications	Suitable for: ICC/IF, IHC-P, Flow Cyt, ELISA, IHC-Fr
Minimal cross-reactivity	Human, Mouse, Rat more details
Immunogen	The details of the immunogen for this antibody are not available.
Conjugation	Alexa Fluor® 647. Ex: 652nm, Em: 668nm

Properties

Form	Liquid
Storage instructions	Shipped at 4°C. Store at +4°C short term (1-2 weeks). Upon delivery aliquot. Store at -20°C. Avoid freeze / thaw cycle. Stable for 12 months at -20°C. Store In the Dark.
Storage buffer	Preservative: 0.02% Sodium azide Constituents: 23% Glycerol (glycerin, glycerine), PBS, 1% BSA
Purity	Immunogen affinity purified
Purification notes	Antiserum was cross adsorbed using a human, mouse and rat immunosorbents to remove cross reactive antibodies. The antibody to rabbit IgG was isolated by affinity chromatography using antigen coupled to agarose beads.
Clonality	Polyclonal
Isotype	IgG
General notes	Alexa Fluor® is a registered trademark of Molecular Probes, Inc, a Thermo Fisher Scientific

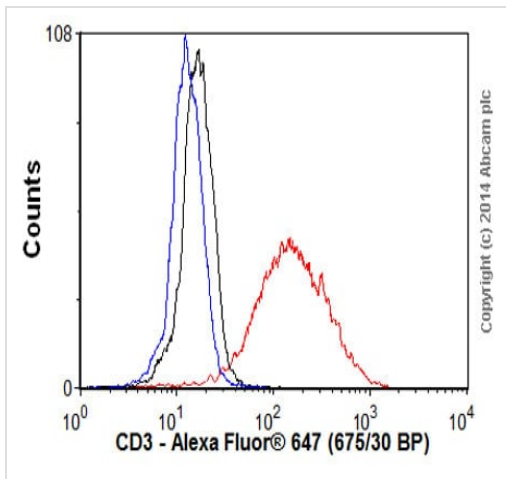
Company. The Alexa Fluor[®] dye included in this product is provided under an intellectual property license from Life Technologies Corporation. As this product contains the Alexa Fluor[®] dye, the purchase of this product conveys to the buyer the non-transferable right to use the purchased product and components of the product only in research conducted by the buyer (whether the buyer is an academic or for-profit entity). As this product contains the Alexa Fluor[®] dye the sale of this product is expressly conditioned on the buyer not using the product or its components, or any materials made using the product or its components, in any activity to generate revenue, which may include, but is not limited to use of the product or its components: in manufacturing; (ii) to provide a service, information, or data in return for payment (iii) for therapeutic, diagnostic or prophylactic purposes; or (iv) for resale, regardless of whether they are sold for use in research. For information on purchasing a license to this product for purposes other than research, contact Life Technologies Corporation, 5781 Van Allen Way, Carlsbad, CA 92008 USA or outlicensing@thermofisher.com.

Applications

The Abpromise guarantee Our **Abpromise guarantee** covers the use of ab150063 in the following tested applications. The application notes include recommended starting dilutions; optimal dilutions/concentrations should be determined by the end user.

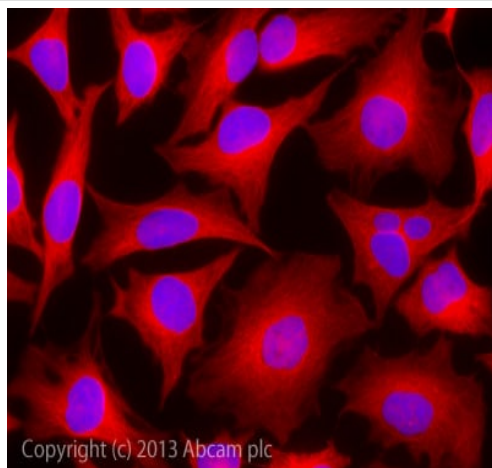
Application	Abreviews	Notes
ICC/IF	★★★★★ (1)	1/200 - 1/1000.
IHC-P	★★★★★ (1)	Use at an assay dependent concentration.
Flow Cyt	★★★★★ (1)	1/1000 - 1/2000. ab199093 - Rabbit monoclonal IgG (Alexa Fluor [®] 647), is suitable for use as an isotype control to complement this secondary antibody.
ELISA		Use at an assay dependent concentration.
IHC-Fr		Use at an assay dependent concentration.

Images



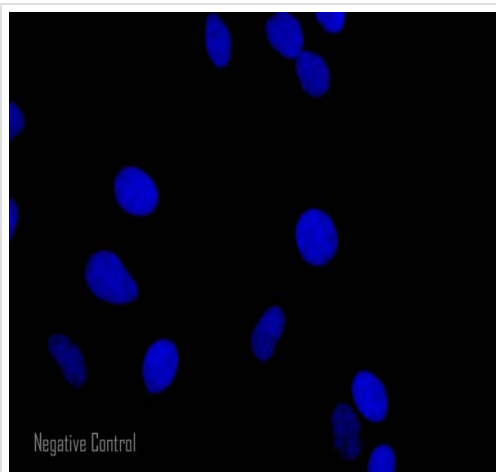
Flow Cytometry - Donkey Anti-Rabbit IgG H&L
(Alexa Fluor® 647) preadsorbed (ab150063)

Overlay histogram showing Jurkat cells stained with **ab16669** (red line). The cells were fixed with 4% paraformaldehyde (10 min) and then permeabilized with 0.1% PBS-Tween for 20 min. The cells were then incubated in 1x PBS / 10% normal donkey serum / 0.3M glycine to block non-specific protein-protein interactions followed by the antibody (**ab16669**, 1/1000 dilution) for 30 min at 22°C. The secondary antibody Donkey anti-rabbit IgG H&L (Alexa Fluor® 647) (ab150063) was used at 1/1000 dilution for 30 min at 22°C. Isotype control antibody (black line) was rabbit IgG (monoclonal) (0.1µg/1x10⁶ cells) used under the same conditions. Unlabelled sample (blue line) was also used as a control. Acquisition of >5,000 events were collected using a solid-state 25mW red diode laser (635nm) and 675/30 bandpass filter.



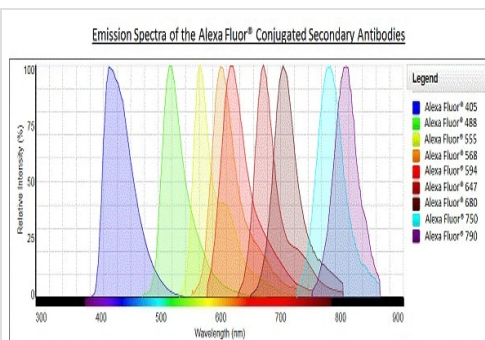
Immunocytochemistry/ Immunofluorescence -
Donkey Anti-Rabbit IgG H&L (Alexa Fluor® 647)
preadsorbed (ab150063)

ICC/IF image of **ab6046** stained HeLa cells. The cells were 100% methanol fixed (5 min) and then incubated in 1%BSA / 10% normal goat serum / 0.3M glycine in 0.1% PBS-Tween for 1h to permeabilise the cells and block non-specific protein-protein interactions. The cells were then incubated with the antibody (**ab6046**, 1µg/ml) overnight at +4°C. The secondary antibody (red) was ab150063 Alexa Fluor® 647 donkey anti-rabbit IgG (H+L) used at 2µg/ml for 1h. DAPI was used to stain the cell nuclei (blue) at a concentration of 1.43µM.



Immunocytochemistry/ Immunofluorescence -
Donkey Anti-Rabbit IgG H&L (Alexa Fluor® 647)
preadsorbed (ab150063)

HeLa cells showing negative staining by ICC/IF using only secondary antibody. The cells were 100% methanol fixed (5 min) and then incubated in 1%BSA / 10% normal goat serum / 0.3M glycine in 0.1% PBS-Tween for 1h to permeabilise the cells and block non-specific protein-protein interactions. The secondary antibody (red) was ab150063 Alexa Fluor® 647 donkey anti-rabbit IgG (H+L) used at 2µg/ml for 1h. DAPI was used to stain the cell nuclei (blue) at a concentration of 1.43µM.



Alexa Fluor® - Donkey Anti-Rabbit IgG H&L (Alexa Fluor® 647) preadsorbed (ab150063)

Please note: All products are "FOR RESEARCH USE ONLY. NOT FOR USE IN DIAGNOSTIC PROCEDURES"

Our Abpromise to you: Quality guaranteed and expert technical support

- Replacement or refund for products not performing as stated on the datasheet
- Valid for 12 months from date of delivery
- Response to your inquiry within 24 hours
- We provide support in Chinese, English, French, German, Japanese and Spanish
- Extensive multi-media technical resources to help you
- We investigate all quality concerns to ensure our products perform to the highest standards

If the product does not perform as described on this datasheet, we will offer a refund or replacement. For full details of the Abpromise, please visit <https://www.abcam.com/abpromise> or contact our technical team.

Terms and conditions

- Guarantee only valid for products bought direct from Abcam or one of our authorized distributors